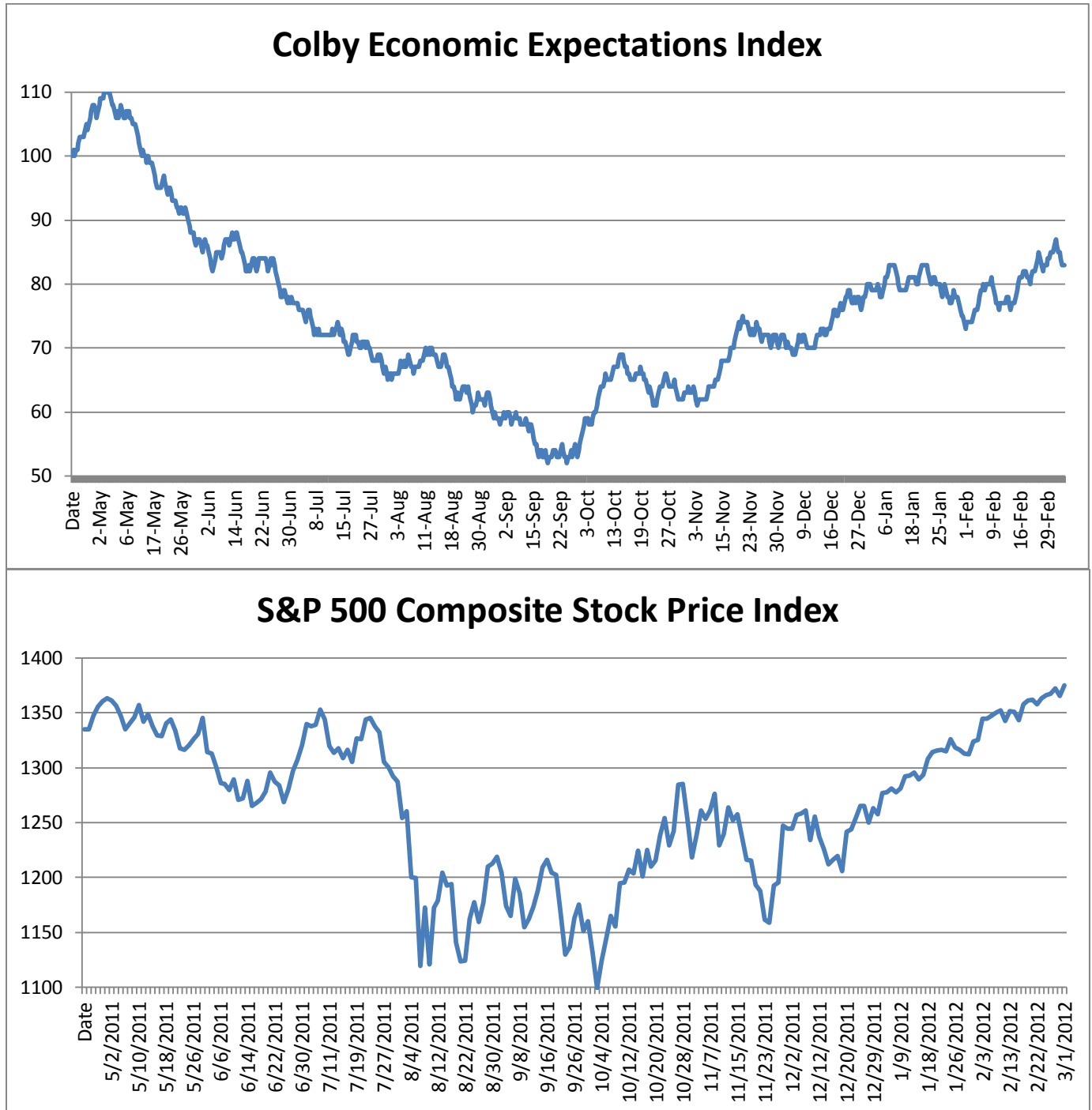


# Colby Global Markets Report

Prices and rankings as of the close on Friday, March 2, 2012

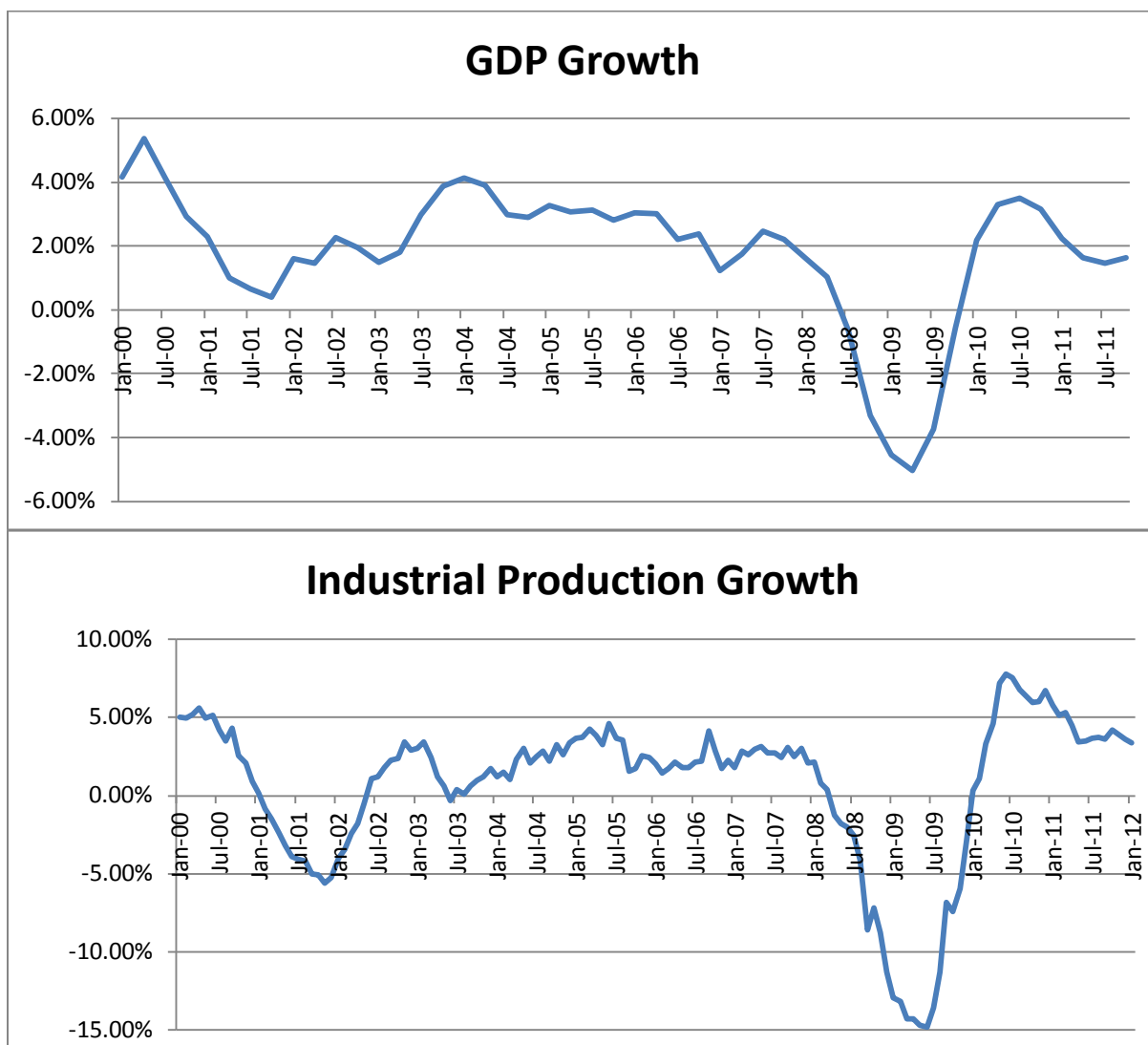


**Colby Economic Expectations Index fell to 83 from 84 the previous week.** Pending Home Sales, Consumer Confidence, Q4 GDP, Chicago PMI, and Initial and Continuing Jobless Claims were better than economists expected. On the other hand, Durable Orders, Durable Orders ex Transportation, Case-Shiller 20-city Index, Personal Income, Personal Spending, ISM Index, and Construction Spending were worse than expected.

The chart shows that the actual reported data was better than economists estimated from September 28, 2011, to **March 1, 2012**.

Note on the chart that there is a strong correlation between the performance of this Expectations Index and the S&P 500 Composite Stock Price Index, with Expectations leading the way. Stock prices are back up to their highs of 2011 and are clearly outrunning the Expectations Index. ***This divergence might suggest that stock prices are ahead of themselves.***

**There is a significant risk that actual economic data could fall short of expectations in months ahead.** Unusually warm winter weather in the U.S. has encouraged greater than normal seasonal economic activity, thereby borrowing from the future. Mortgage foreclosures are expected to increase in months ahead, increasing the supply of houses for sale and further depressing prices. High and rising oil and gasoline prices are “likely to push up inflation temporarily while reducing consumers’ purchasing power”, Fed Chairman Bernanke told Congress last week. To the extent that falling Jobless Claims have been a reflection of defeated job seekers giving up looking for work and no longer being counted as unemployed, the apparent improvement in employment data may be less than meets the eye.



According to Lakshman Achuthan of the highly-regarded ***Economic Cycle Research Institute***, a return to economic contraction still is probable. ERCI's "definitive, hard data used to determine official recession dates have gotten worse, not better... GDP growth, year-over-year, peaked in the third quarter of 2010 at 3.5%. By the second quarter of 2011, it had fallen to 1.5% and it's basically flat-lined from there. It has not reaccelerated. It's a similar pattern for personal income growth and it's a similar pattern for the broad measures of sales growth. As of January, when you look at industrial production growth, year-over-year, it has now declined to a 22-month low. Taking all of these key aggregate measures of output, jobs, income, and sales, putting it into our Coincident Index, the growth rate has now dropped to a 21-month low. The economy is weaker today than it has been in 21 months."

**The financial crisis in Europe remains a drag on the global outlook.** The ECB's \$1.3 trillion liquidity pumping actions (that is, "gifts" to banks) since December provided fast temporary relief from acute and immediate worries of disorderly collapse. The ECB bought some time, but the ECB cannot solve the underlying disease of declining economies and out-of control-government deficits. Although last week some European Union leaders expressed confidence that the worst of the crisis is over, ECB president Mario Draghi warned that prospects for recovery remain fragile, and Germany's

chancellor Angela Merkel said, "The situation is somewhat calmer, but the crisis has not been overcome."

Eurogroup President Jean-Claude Juncker said bailout funding can be delivered to Greece only **after** completion of the bond swap scheduled for next Friday, 3/9/12. On Friday 3/2/12, ratings agency Moody's downgraded Greece to the lowest rating on its bond scale, to C from Ca, on the basis that risk of default remains high--even **if** a bond-swap deal with banks and other private investors is successful--which may be doubtful. The problem with this bond swap is that some investors are not willing to voluntarily accept losses in excess of 70% on their Greek bond holdings. Next week could be interesting.

Spain, the euro zone's fourth-largest economy, may be the next victim. Prime Minister Mariano Rajoy announced that Spain will miss its deficit goal for 2012, and that risks large fines from the European Union, loss of confidence, and rising bond yields. Spain's unemployment already has mushroomed to 22.9% as its economy has fallen into a deepening recession which is expected to only grow worse. Spain's government deficit is now estimated to reach 5.8% of economic output in 2012, which is 32% more than the target of 4.4%--a big miss that is far worse than previously expected, leading to renewed questions about the health of Spain's banking system and public finances.

It comes as no surprise that austerity fiscal policy imposed when the economy already is weak only can lead to economic contraction and falling tax revenue, which only can lead to further cuts in governments spending, which only can lead to further economic contraction and falling tax revenue, which only can lead to further cuts in governments spending...and so on, in an endless downward economic spiral.

**Be prepared** for financial "accidents", such as broker-dealer bankruptcies, like Lehman Brothers and MF Global. Make sure that all your securities are held at SIPC insured brokerage firms only. Move cash to FDIC insured U.S. bank accounts or to money market funds that only hold securities fully backed by the U.S. government. This is no time to take any unnecessary risks.

Given the serious problems and risks of failing institutions and dysfunctional global monetary and fiscal policies, we have been implementing a risk-averse strategy, investing in varying proportions of the safest U.S. Treasury bonds and FDIC insured cash, for clients' accounts we manage--and we have made positive returns in 2012 and superior returns in 2011 while doing it. We are not simply buying and holding financial instruments like the typical fund manager. Rather, we are flexibly anticipating and adapting to trends as they develop in order to maximize returns while minimizing risks.

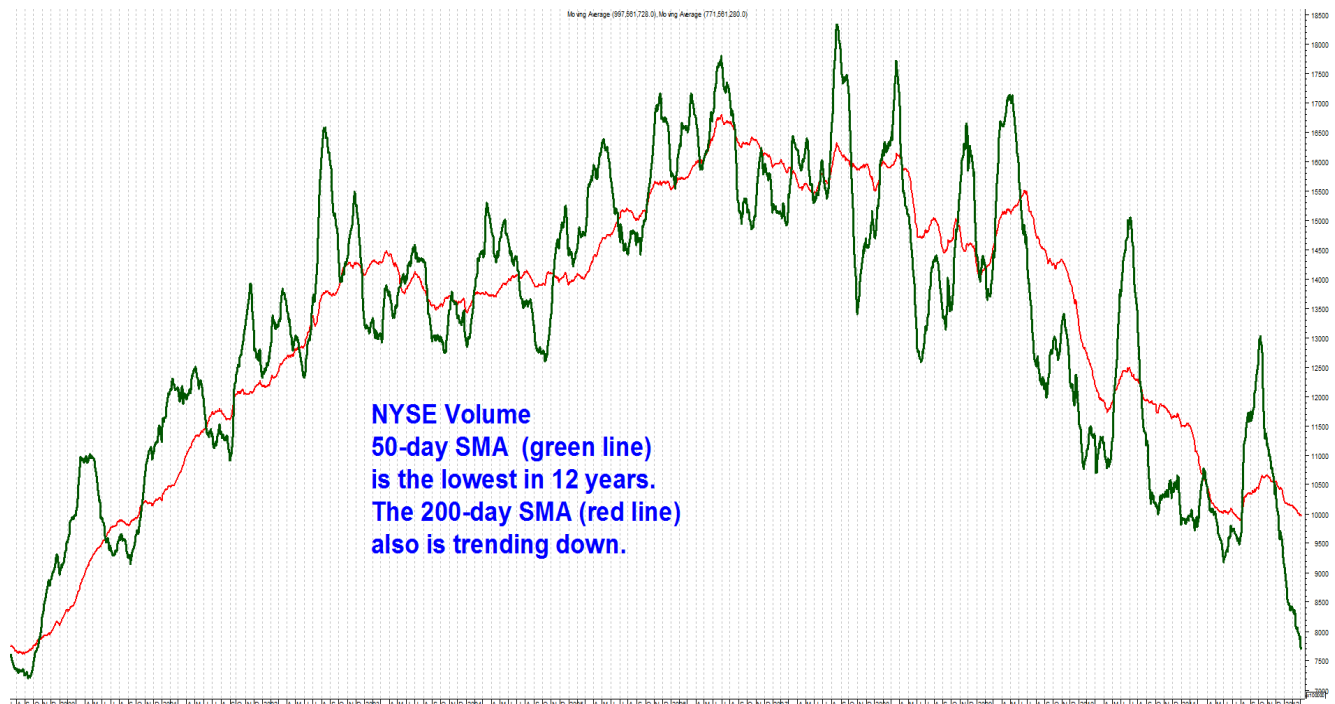
If you agree that making money while staying safe is better than losing money while taking big risks, we would be happy to implement our safety-first strategy for you. ***If you already have a managed account with us, now would be a good time to place more of your assets under our management--before the next crisis hits most portfolios.*** Please call or email Bill Anderson, by phone: **646-652-6879**, or by email: **[anderson@colbyassetmanagement.com](mailto:anderson@colbyassetmanagement.com)**.

## **Stock Market: *Showing Signs of Fatigue***

The Largest Cap S&P 100/S&P 500 Relative Strength Ratio (OEX/SPX) rose above its highs of the previous 7 weeks on 3/2/12, thereby confirming its preexisting bullish trend. OEX/SPX remains above its 50-day and 200-day SMAs, and the 50-day SMA has remained bullishly above the 200-day SMA every day since 8/25/11. Large Caps tend to outperform in bearish general market trends as investors seek the perceived relative safety of large size.

The Small Cap Russell 2000 Index/Large Cap Relative Strength Ratio (IWM/SPY) fell below the lows of the previous 8 weeks on 3/2/12, thereby confirming a relatively weak trend for the medium term. IWM/SPY is technically neutral, below its 50-day SMA and 200-day SMA, but with the 50-day SMA now slightly above the 200-day SMA.

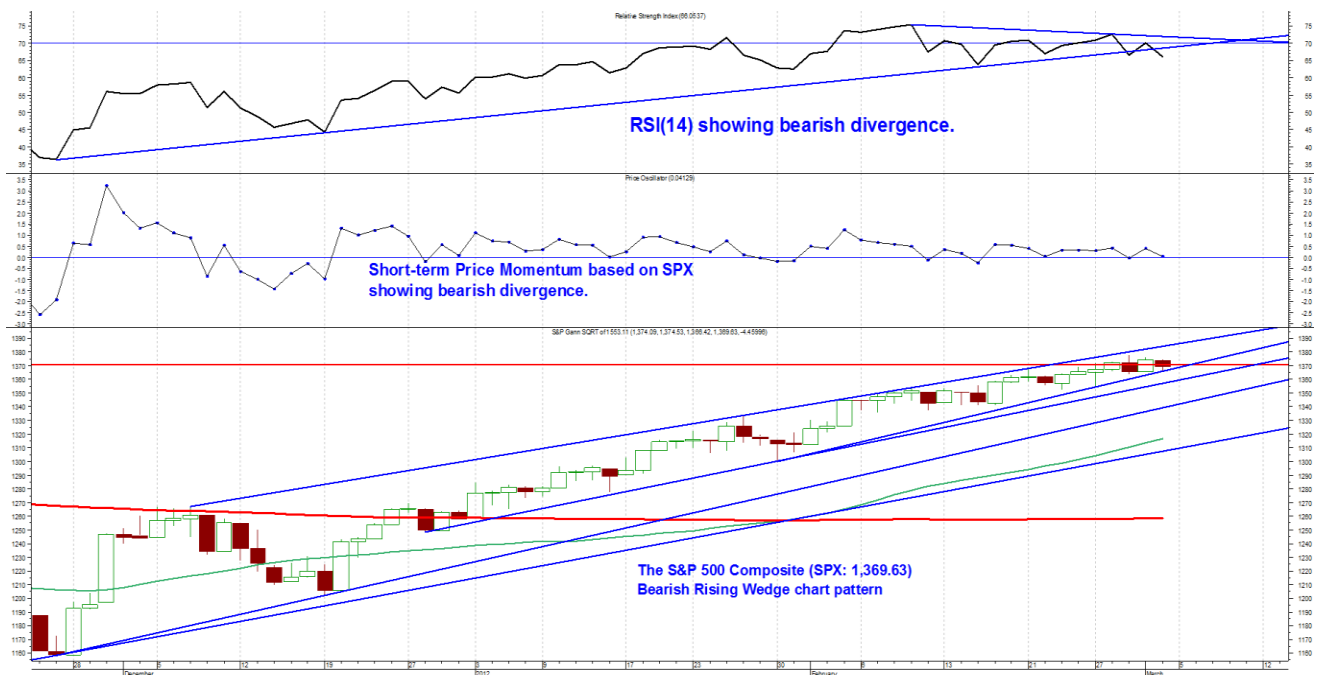
The S&P 500 Composite (SPX: 1,369.63) stalled out on Thursday and Friday, following a bearish Key Reversal Day on Wednesday.



NYSE volume fell 14% on Friday to its lowest level in more than 3 weeks, and the 50-day SMA of volume fell to its lowest level in 12 years. On days when stock prices rise, volume languishes at extremely low levels, suggesting weak demand for stocks.



The chart of Cumulative NYSE Advance-Decline Volume stalled out below its previous highs in February, April, and June, 2011, warning of bearish divergence.



SPX remains within a potential Bearish Rising Wedge chart pattern, which has forming since December. In addition, that pattern is contained within a larger potential Bearish Rising Wedge chart pattern beginning at the October low. Break downs below the lower boundary lines would offer technical warning of a possible fast return to the lows.

One of the most popular price momentum indicators, RSI(14), fell below its lows of the previous 10 trading days after failing to confirm higher price highs over the past 15 trading days. RSI(14) is warning of bearish divergence.

My Sensitive Short-Term Price Momentum Oscillator based on SPX turned down and currently shows zero upside momentum, indicating a bearish divergence compared to

the close price of the SPX. In recent weeks, the slowness of the grind higher indicated that the stock market already had lost most of its bullish momentum.

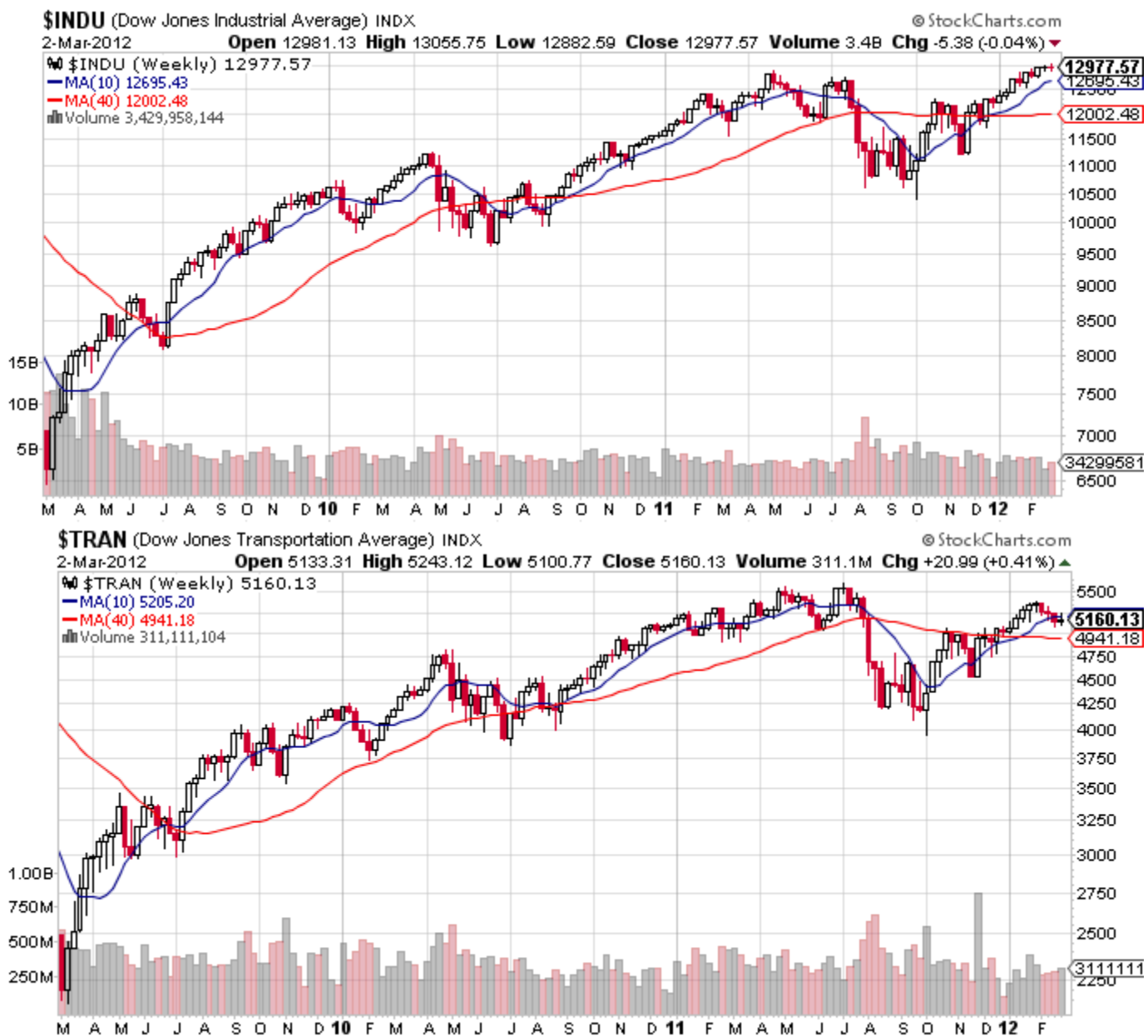
Expect resistance near the 2011 highs, around the intraday peak on the SPX at 1370.58 set on 5/2/2011, allowing plus or minus a few percentage points for Gann's "lost motion".

Overbought, up big from the October low, and with no room above before encountering resistance, Potential Reward relative to potential Risk appears unattractive for stocks.

Recent sentiment data, detailed below, indicates alarming degrees of optimism and bullish complacency. When the majority of investors has been bullish for some time, we can assume that they are already fully invested in the market. Once everyone who is going to buy has already bought, stocks are vulnerable to a downside shakeout. The pendulum of emotion tends to swing too far in one direction, but market mood always reverts to the mean.

## Stock Market Indicators

[The Dow Theory](#) gave a bullish signal on 12/23/11, when both Dow-Jones Industrial and Transportation Averages closed above their closing price highs of the previous 5 months. These two Averages diverged after 2/3/12, however, as Industrials struggled modestly higher while Transports failed to confirm higher highs. The Industrials rose above their highs of the previous 3 years on 2/28/12, but the Transports were 3.79% below their high closing price set on 2/3/12.

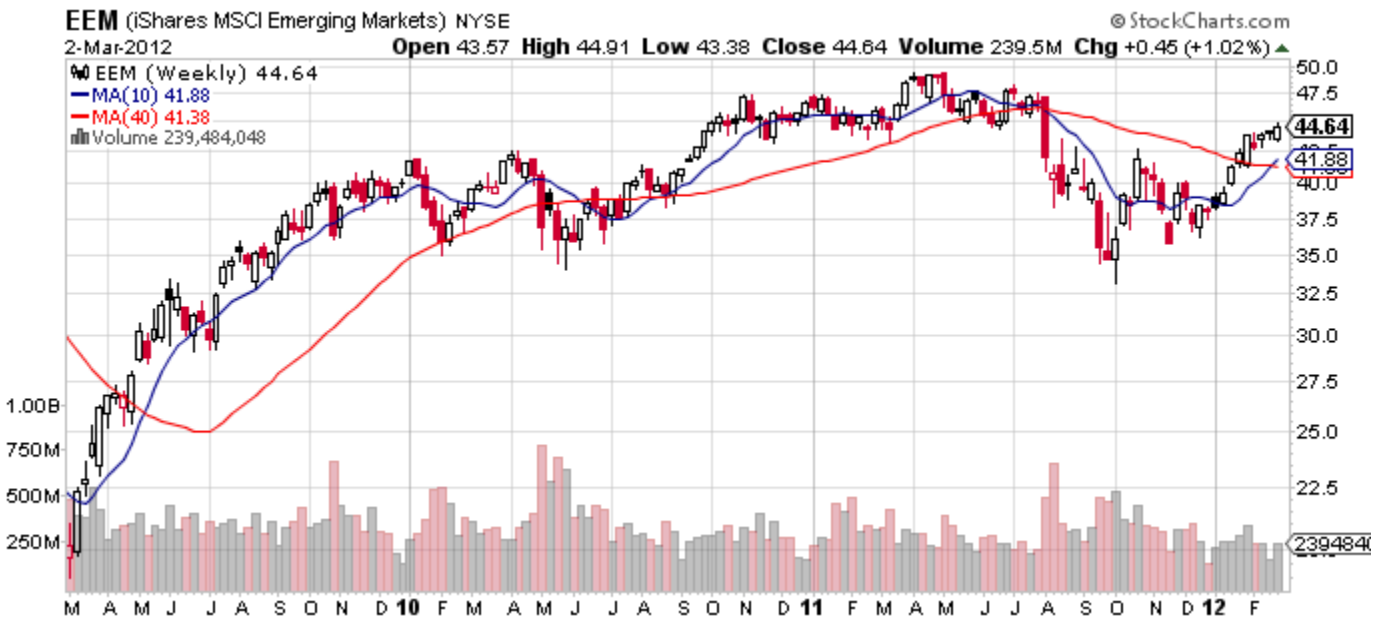




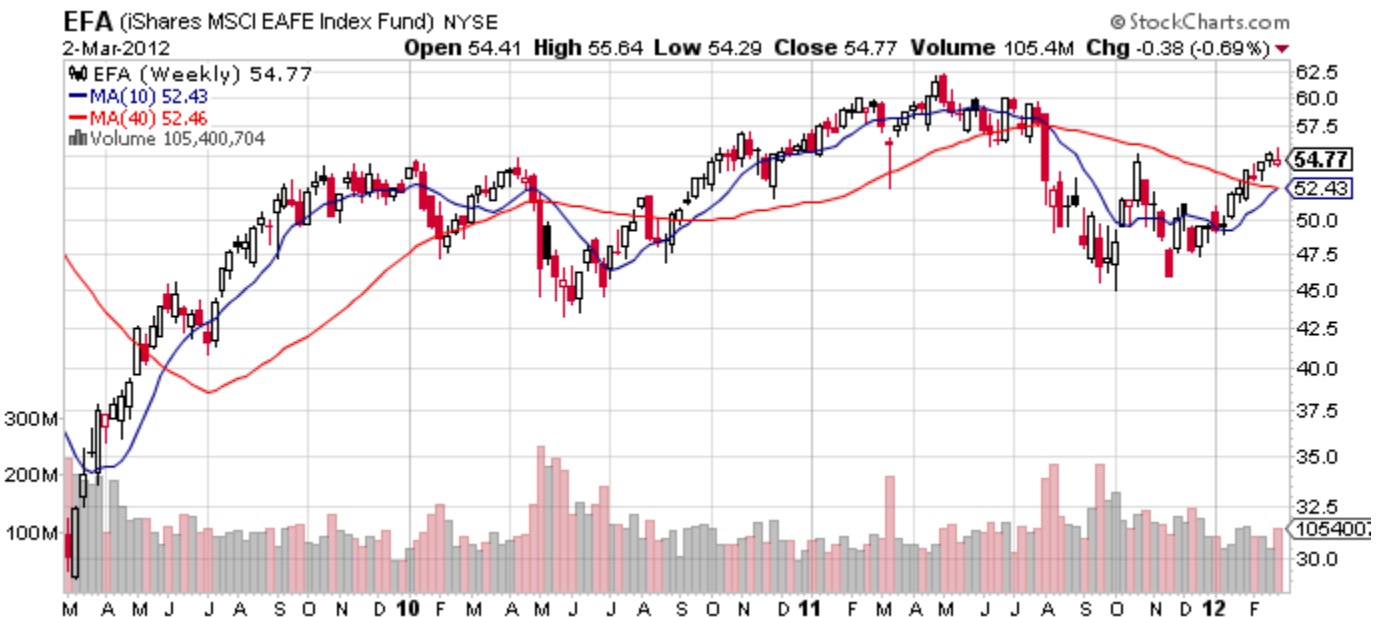
**NASDAQ Composite/S&P 500 Relative Strength Ratio** rose from 12/29/12 to 2/16/12 but stalled since. Still, the Ratio remains above its 50-day and 200-day SMAs. Absolute price of the NASDAQ Composite rose to an 11-year high intraday on 2/29/12 but reversed to close lower, possibly suggesting exhaustion for the short term.



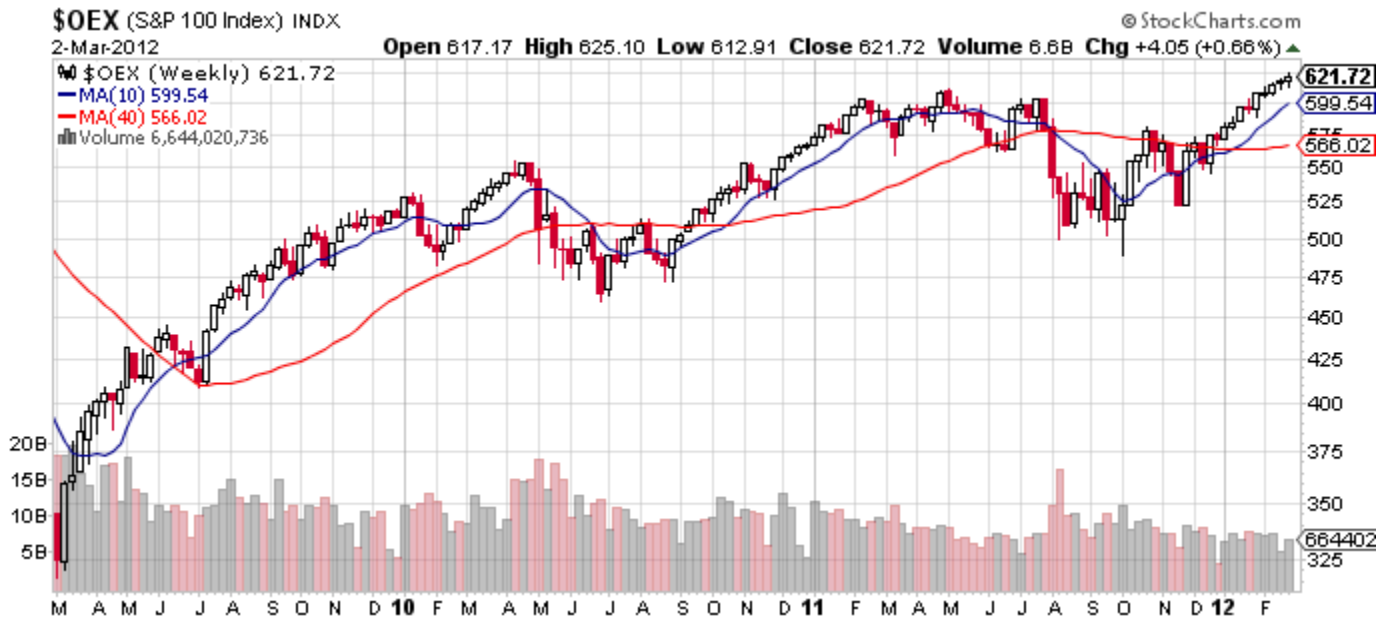
**iShares MSCI BRIC Fund (BKF) Relative Strength Ratio (BKF/SPY)** remains neutral, above its 50-day SMA but below its 200-day SMA. The 50-day SMA has remained bearishly below the 200-day SMA every day since 1/13/11.



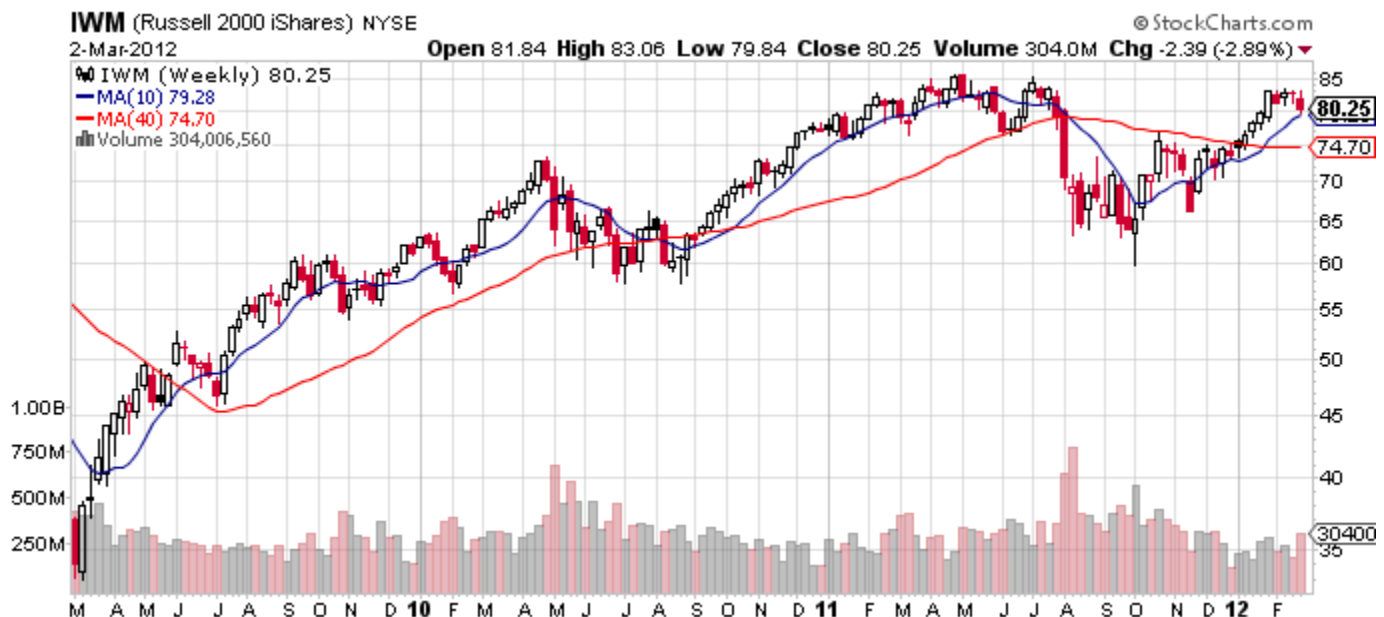
**Emerging Markets Stocks ETF (EEM) Relative Strength Ratio (EEM/SPY)** remains technically neutral. EEM/SPY remains above its 50-day SMA but below its 200-day SMA, and the 50-day SMA has remained bearishly below the 200-day SMA every day since 2/3/11.



**Foreign Stocks ETF (EFA) Relative Strength Ratio (EFA/SPY)** underperformed again last week and appears to be pointing toward further weakness. EFA/SPY remains technically neutral, above its 50-day SMA but below its 200-day SMA. The 50-day SMA has remained bearishly below the 200-day SMA every day since 1/14/11.



The Largest Cap S&P 100/S&P 500 Relative Strength Ratio (OEX/SPX) rose above its highs of the previous 7 weeks on 3/2/12, thereby confirming its preexisting bullish trend. OEX/SPX remains above its 50-day and 200-day SMAs, and the 50-day SMA has remained bullishly above the 200-day SMA every day since 8/25/11. Large Caps tend to outperform in bearish general market trends as investors seek the perceived relative safety of large size. Large Caps tend to underperform Mid Caps and Small Caps in bullish general market trends as investors prefer riskier and more volatile stocks.



The Small Cap Russell 2000 Index/Large Cap Relative Strength Ratio (IWM/SPY) fell below the lows of the previous 8 weeks on 3/2/12, thereby confirming a relatively weak trend for the medium term. IWM/SPY is technically neutral, below its 50-day SMA and 200-day SMA, but with the 50-day SMA now slightly above the 200-day SMA.



**The S&P Mid Cap 400/Large Cap Relative Strength Ratio (MDY/SPY)** fell below the lows of the previous 4 weeks on 3/2/12, thereby confirming a relatively weak trend for the medium term. MDY/SPY is technically neutral, below the 200-day SMA but above the 50-day SMA. Longer-term, the 50-day SMA has remained below the 200-day SMA consistently every day since 8/24/11.

.....

### Sentiment for Contrary Thinking

**ABC News** reported on 2/21/12 that 10 out of 10 investment strategists at large firms were bullish. <http://abcnews.go.com/watch/world-news-with-diane-sawyer/SH5585921/VD55173505/world-news-221-dow-jones-climbs-past-13000>

**The Commitment of Traders (COT) report** shows that the Commercials (giant corporations with deep pockets) have been buying "risk off" defensive futures contracts, specifically, the U.S. dollar and the ten-year Treasury note. On the other side, trend-following Speculators have been buying "risk on" aggressively bullish contracts, setting a new all-time net-long record in the Nasdaq futures. The unusually large size of Speculators' positions implies a weak-handed, top-heavy stock market.

**AAll Sentiment:** There were 51.64% Bulls and 20.19% Bears, according to the AAll weekly survey reported on 2/9/12. This was the highest level of bullish sentiment in more than a year, since 52.34% Bulls on 1/13/11.

**Investors Intelligence Sentiment:** There were 54.8% Bulls versus 25.8% Bears, according to the Investors Intelligence weekly survey of stock market newsletter advisors reported on 2/15/11. This was the highest level of bullish sentiment since the stock market top in May, 2011.

**Investment Newsletters** were 75% bullish, the highest since near the major top in year 2000, according to Hulbert Digest.

**Market Vane's Bullish Consensus among Advisors and Newsletters** rose to 66% Bulls this month, in the same 64% to 69% range of Bulls from February to July 2011 at the highs.

**Short Selling ETFs** are trading the lowest volume since the market top in April, 2011, according to Frank D. Gretz of Wellington Shields & Co.

**Corporate insiders have been selling** their companies' stock at the heaviest rate since the market peak last July, according to Mark Hulbert at MarketWatch. Insiders sold 577 shares for each 100 shares they bought, according to Argus Research Vickers Weekly Insider Report. That is a big change in insider behavior from 81 shares sold for each 100 shares bought in November. Since corporate insiders (officers, directors, and largest shareholders) know so much more about their companies than the public can possibly know, it is bearish when insiders sell at such a heavy pace.

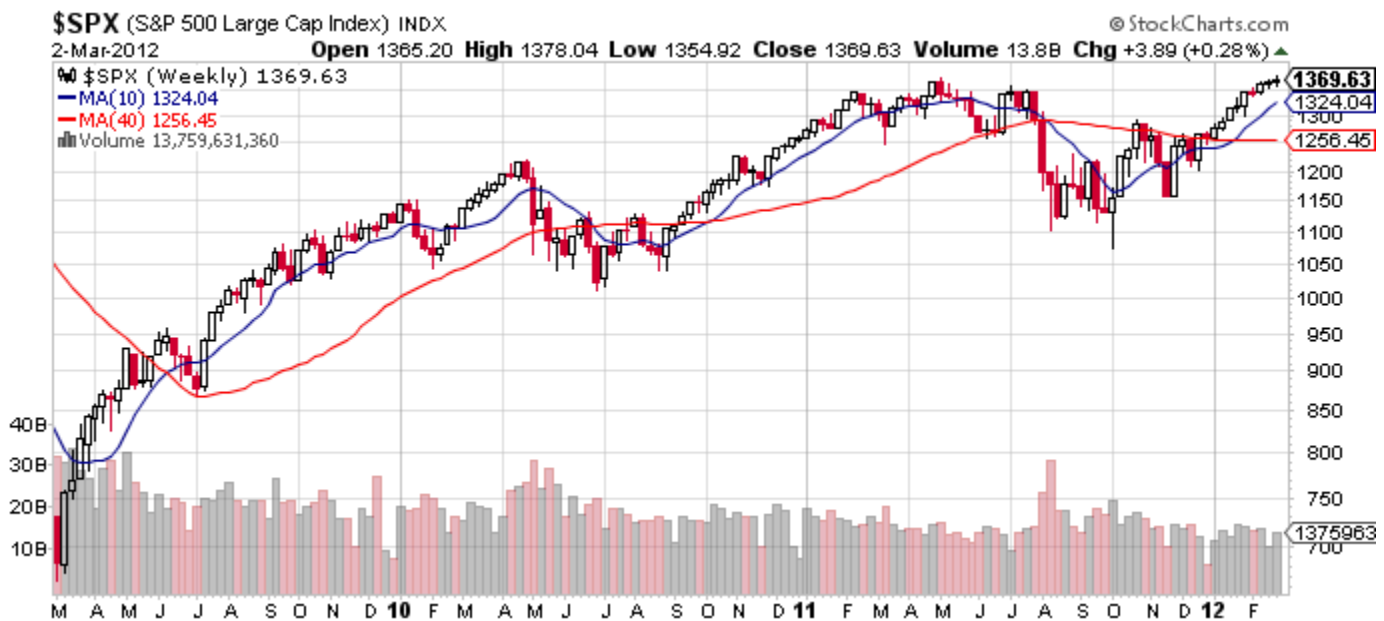
**NYSE short interest collapsed** from a high peak of 16.1 billion shares sold short last September, which coincided with the stock market lows, to 12.5 billion shares sold short in February. This is the lowest level since last April, at the market top. Short interest represents a pool of potential demand for stocks, since short sellers eventually must buy back the shares they borrowed. Currently, that pool of demand is depleted.



**VIX Fear Index** broke down below the lows of the previous 6 months on 2/3/12, hitting 16.10 intraday. That was down from a peak of 48.00 on 8/8/11. Such a large drop in VIX indicated a shift away from fear and toward bullish complacency, which may be bearish. VIX is a market estimate of expected constant 30-day volatility, calculated by weighting S&P 500 Index CBOE option bid/ask quotes spanning a wide range of strike prices for the two nearest expiration dates.

## The S&P 500 Composite Potential Resistance

1576.09, high of 10/11/2007  
1552.76, high of 10/31/2007  
1523.57, high of 12/11/2007  
1498.85, high of 12/26/2007  
1440.24, high of 5/19/2008  
1406.32, high of 5/29/2008  
1381.50, Fibonacci 78.6% of 2007-2009 range  
1378.04, high of 2/29/2012  
1376.55, Fibonacci 100.0% projection 10/11 range  
1370.58, high of 5/2/11



## The S&P 500 Composite Potential Support

1352.28, low of 2/23/2012  
1337.35, low of 2/10/2012  
1300.49, low of 1/30/2012  
1277.58, low of 1/13/2012  
1265.26, low of 1/5/2012  
1262.30, low of 12/27/2011  
1258.66, 200-day SMA  
1257.46, low of 12/30/11  
1257.58, Fibonacci 61.8% of 2011 range  
1255.22, high of 12/22/2011  
1248.64, low of 12/29/2011  
1244.80, low of 12/7/2011  
1239.73, low of 12/1/2011  
1238.81, Fibonacci 78.6% of 1,576.09 high  
1234.81, low of 11/3/11  
1231.04, high of 12/16/11  
1226.64, low of 11/9/2011

1222.68, Fibonacci 50% of 2011 range  
1224.57, high of 12/19/11  
1215.20, low of 12/16/11  
1209.47, low of 12/14/2011  
1209.43, low of 11/17/2011  
1204.49, Fibonacci 23.6% of 2009-11 range  
1202.37, low of 12/19/11  
1187.77, Fibonacci 38.2% of 2011 range  
1158.66, low of 11/25/2011  
1144.38, Fibonacci 23.6% of 2011 range  
1101.73, Fibonacci 38.2% of 2009-11 range  
1074.77, low of 10/4/2011  
1039.70, low of 8/27/10  
1039.31, Fibonacci 23.6% of June-Aug. 2010 range  
1010.91, low of 7/1/2010  
1018.69, Fibonacci 50% of 2009-11 range  
1008.55, Fibonacci 38.2% of 2009-2010 range  
991.97, low of 9/2/2009  
978.51, low of 8/17/2009  
956.23, high of 6/11/2009  
943.29, Gann 50.0% of 2009-2010 range  
935.64, Fibonacci 61.8% of 2009-11 range  
878.04, Fibonacci 61.8% of 2009-2010 range  
874.17, Gann 62.5% of 2009-2010 range  
869.32, low of 7/8/2009  
817.40, Fibonacci 78.6% of 2009-11 range  
805.17, Gann 75.0% of 2009-2010 range  
785.13, Fibonacci 78.6% of 2009-2010 range  
666.79, intraday low of 3/6/2009

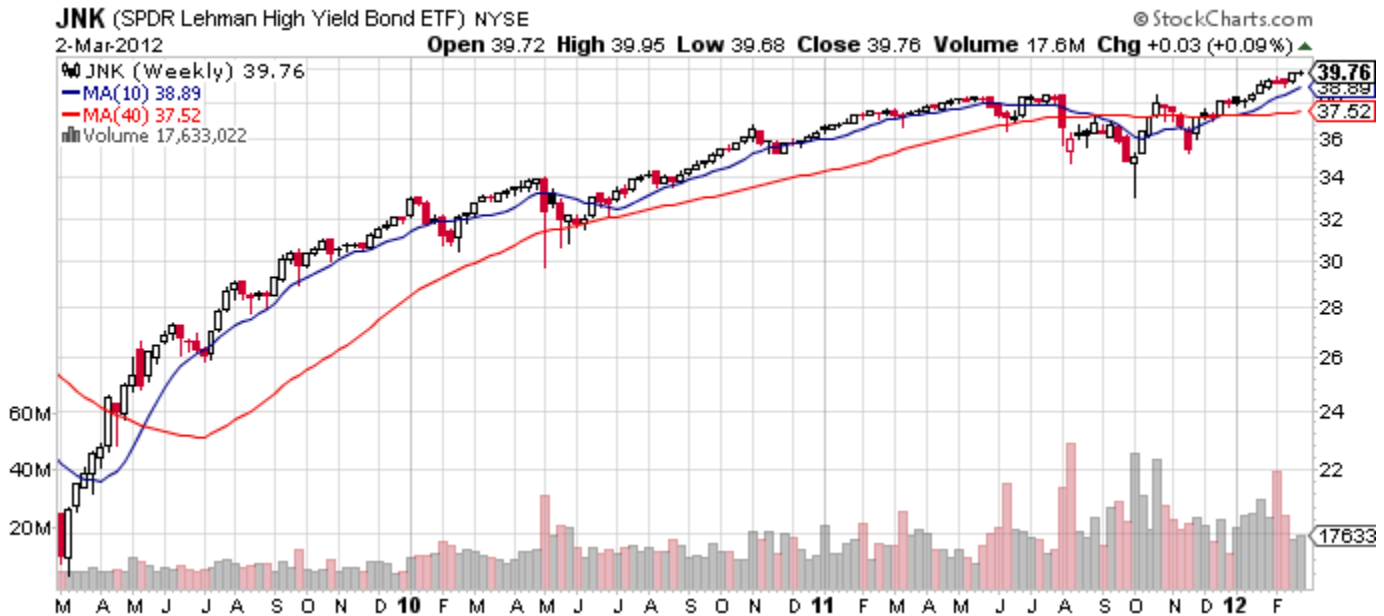
## Fixed-Income Investments



**Bond, iShares Barclays 20+ Year U.S. Treasury ETF (TLT)** turned neutral on 2/25/12 when price fell below its 50-day SMA. TLT remains above its 200-day SMA, and the 50-day SMA has remained above the 200-day SMA every day since 6/24/11, suggesting a persistently bullish major trend for the longer term. Support 114.95, 114.62, 109.82, 106.08, 103.20, 102.27, 96.31, 94.83, 93.14, 89.65, and 88.14. Resistance 119.14, 120.91, 121.64, 121.76, 124.02 and 125.03.



**Bond, iShares Barclays 7-10 Year U.S. Treasury ETF (IEF)** turned neutral on 2/29/12 when price fell below its 50-day SMA. IEF remains above its 200-day SMA. The 50-day SMA has remained above the 200-day SMA every day since 6/21/11, suggesting a persistently bullish major trend for the longer term. Support 104.34, 104.00, 103.29, 102.32, 101.36, 101.11, 99.79, and 97.66. Resistance 105.80, 106.49 and 106.66.



**Junk/Investment-Grade Corporate Bond ETFs Relative Strength Ratio (JNK/LQD)**

turned bearish again on 3/2/12 when it fell below its 50-day SMA. JNK/LQD remains below its 200-day SMA, and the 50-day SMA has remained bearishly below the 200-day SMA every day since 6/20/11.



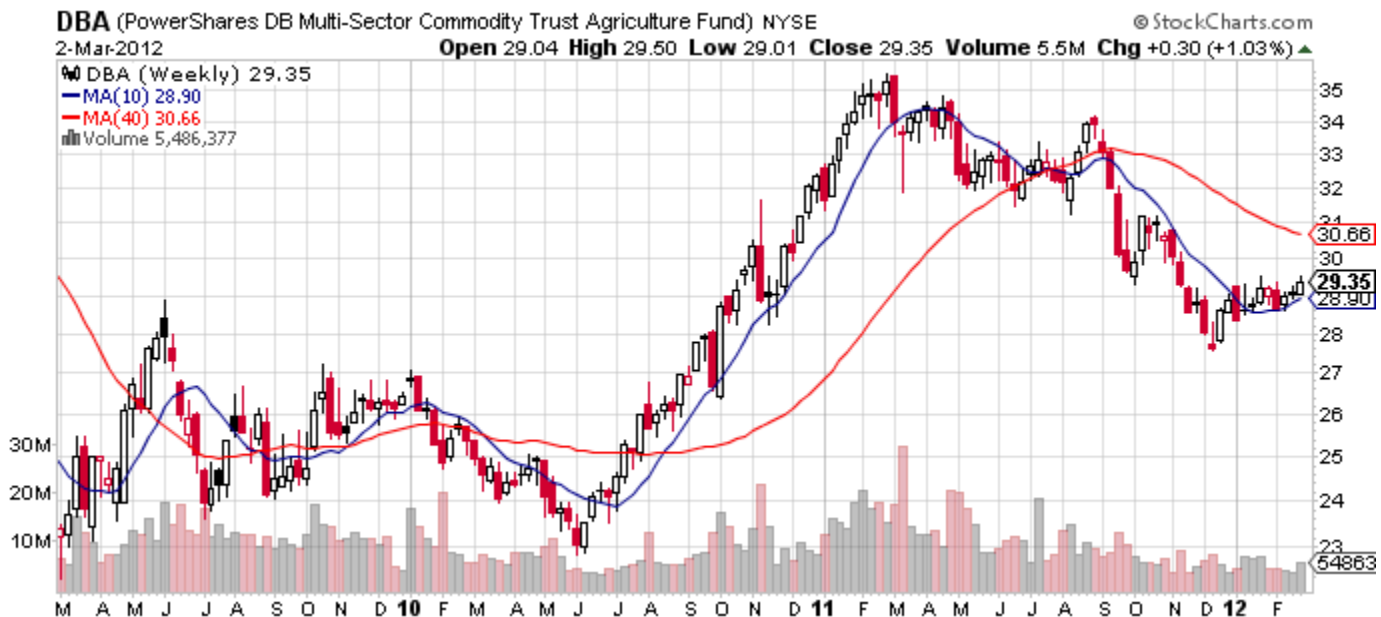
**U.S. Treasury Inflation Protected / U.S. Treasury 7-10 Year ETFs Relative Strength Ratio (TIP/IEF)**

fell below the lows of the previous 11 trading days on 3/2/12, possibly signaling a short-term correction. Previously, TIP/IEF rose from 12/30/11 to 2/22/12 as it became apparent that the world's monetary authorities were willing to inflate fiat currencies. TIP/IEF has remained bullishly above both its 50-day and 200-day SMAs since 2/15/12. The 50-day SMA has remained bearishly below the 200-day SMA.

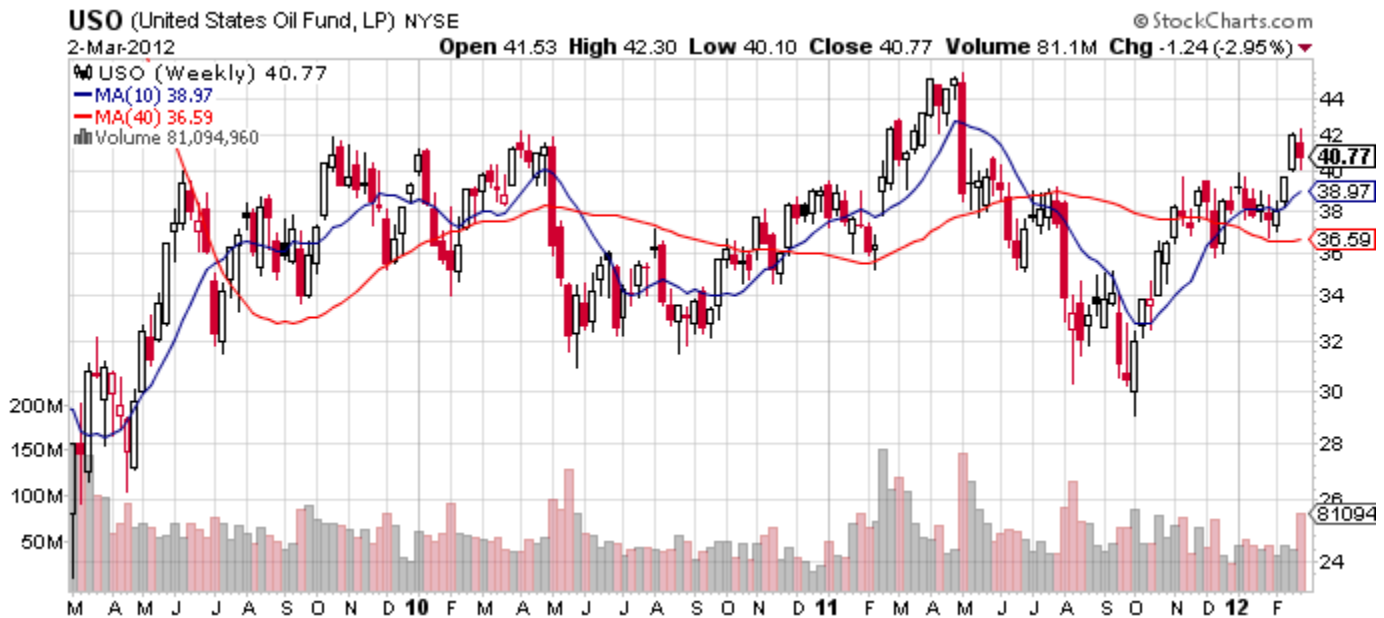
## Tangible Assets, Commodities



**U.S. dollar ETF (UUP)** rose above the highs of the previous 8 trading days on 3/2/12, reflecting a move to "risk off". Technically, UUP remains neutral below its 50-day SMA but above its 200-day SMA since 1/23/12. The 50-day SMA has remained above the 200-day SMA every day since 10/26/11. Support 21.74, 21.58, 21.07, and 20.84. Resistance 22.30, 22.41, 22.46, 22.85, 23.52, 25.84, 27.19, 28.97.



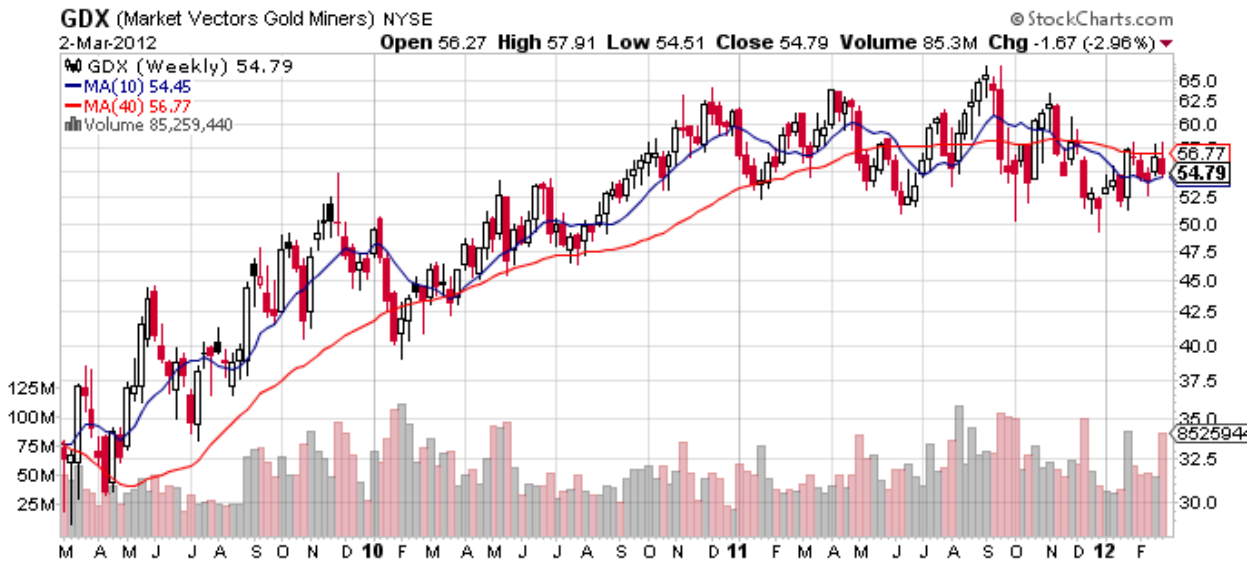
**Agriculture, PowerShares DB Agriculture Fund ETF (DBA)** firmed up modestly since making a low at 28.58 on 2/10/12 but still remains technically neutral. DBA has remained above its 50-day SMA but below its 200-day SMA since 2/14/12, and the 50-day SMA has remained below the 200-day SMA every day since 8/8/11.



**Crude Oil, United States Oil ETF (USO)** appears to have entered a minor corrective wave immediately after rising above its highs of the previous 9 months on 2/24/12, which was a clear sign of major trend strength. Downside potential of a corrective wave may be limited to previous highs just below 40. USO rose above its 50-day SMA and rose above a 6-week downtrend line on 2/13/12, has remained above its 200-day SMA since 12/20/11, and the 50-day SMA has remained above the 200-day SMA every day since 1/3/12. Support 40.35, 39.96, 38.51, 36.67, 35.73, 34.54, 32.52, 29.10, 26.28, and 22.74. Resistance 42.30 and 45.60.



**Gold, SPDR Gold Shares ETF (GLD)** fell below the lows of the previous 5 weeks on 2/29/12 but remains in bullish position above its 50-day and 200-day SMAs. Longer term, the 50-day SMA has remained bullishly above the 200-day SMA every day since 2/11/09. Support: 164.00, 160.29, 159.68, 158.01, 156.19, 154.55, 148.27, 147.19, 143.97, 143.42, and 142.55. Resistance: 174.00, 175.46, 177.40, and 185.85.

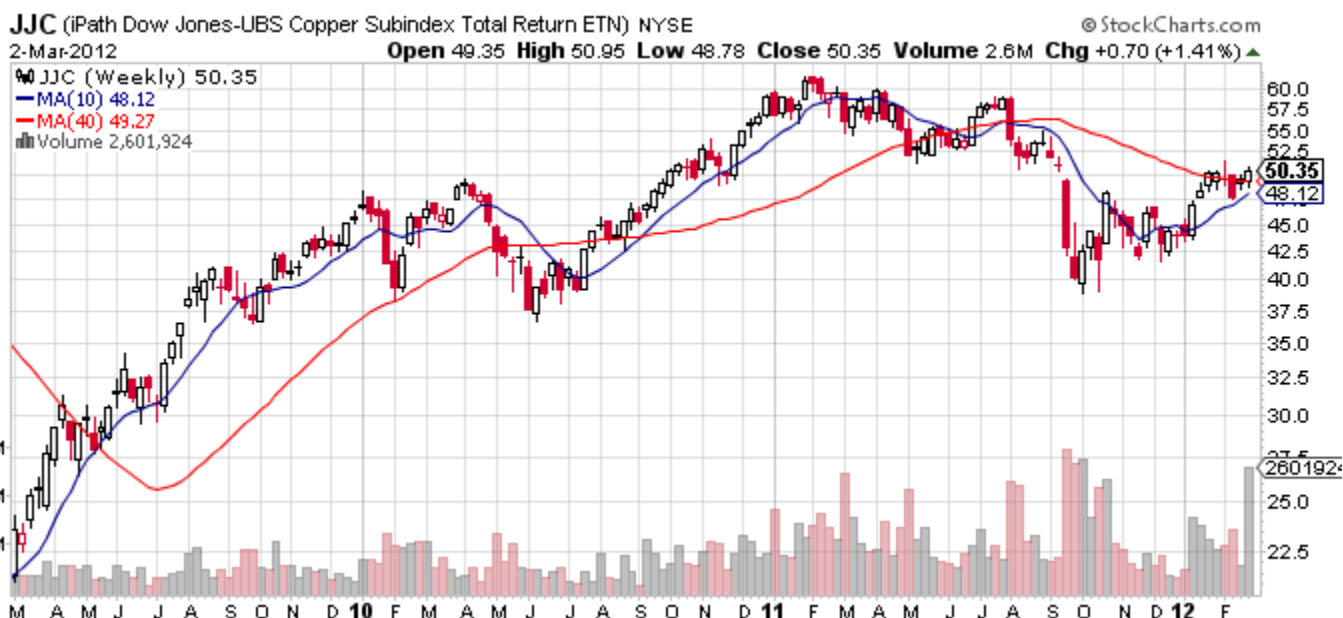


**Gold Mining Stocks ETF/Gold Shares ETF Relative Strength Ratio (GDX/GLD) fell below the lows of the previous 3 years on 2/15/12, thereby reconfirming a bearish major trend for the long term. The 50-day SMA has remained bearishly below the 200-day SMA every day since 2/22/11.**



**Silver, iShares Silver Trust ETF (SLV) fell below the lows of the previous 6 trading days on 2/29/12 in what looks like a minor ABC, 3-wave pullback within a larger uptrend. SLV remains above its 50-day SMA but slightly below its 200-day SMA. The 50-day SMA remains below the 200-day SMA. Support 32.90, 31.82, 30.67, 28.63, 27.83, 25.65, and 24.44. Resistance: 36.44, 40.23, 41.49, 42.30, 42.78, 44.71 and 48.35.**

**Silver/Gold ETFs Ratio (SLV/GLD) fell below the levels of the previous 3 days on 3/2/12, possibly signaling a minor pullback within a larger uptrend. SLV/GLD rose from 12/28/11 to 3/1/12 above its highs of the previous 5 months in what still could become a more extended recovery following an 8-month collapse. SLV/GLD remains technically neutral, above its 50-day SMA but below its 200-day SMA. Longer term, the 50-day SMA has remained below the 200-day SMA every day since 8/30/11, but the spread is narrowing.**



**Copper, iPath DJ-UBS Copper TR Sub-Index ETN (JJC)** has turned choppy and corrective since peaking at 51.41 on 2/9/12. Given that "Dr. Copper" is one of the best indicators of investor confidence (or lack thereof) in the global industrial cycle, this underperformance may be suggesting rising doubts about prospects for the economy.

**9 major U.S. stock sectors ranked in order of long-term relative strength:**

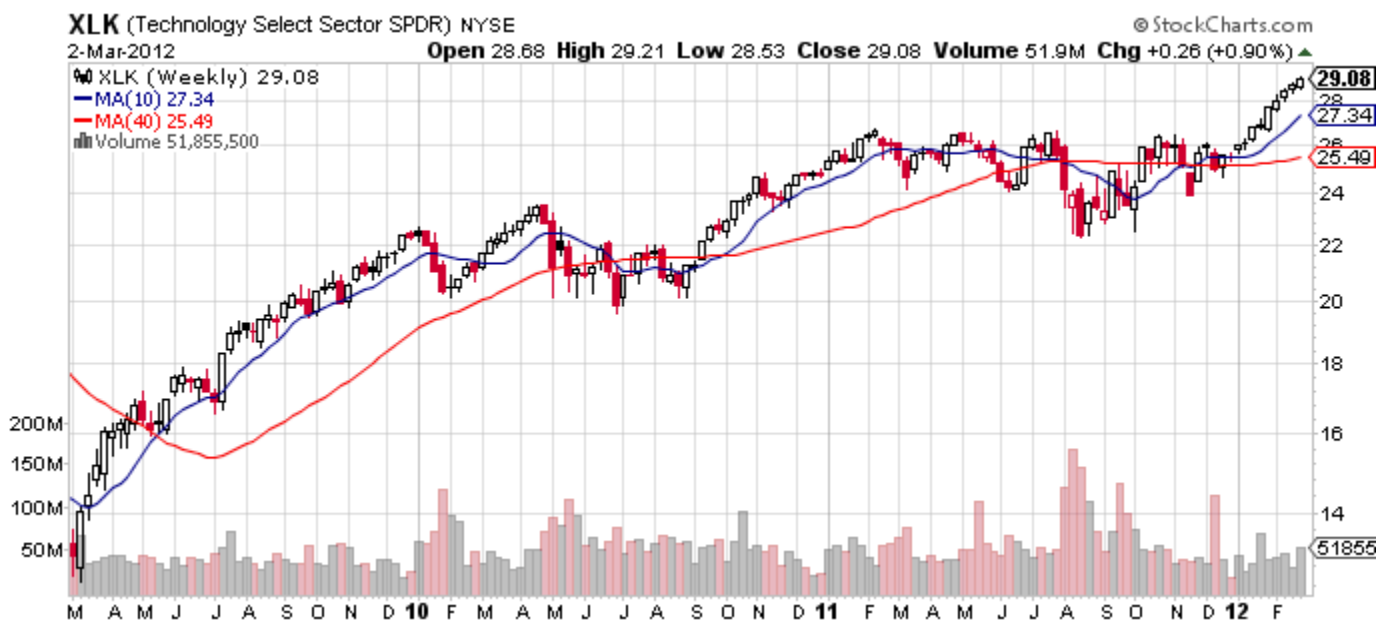
<u>Rank</u>	<u>Rating, Weighting</u>	<u>9 Major Stock Sectors Ranked, symbol</u>
1	Neutral, Market Weight	Technology SPDR, XLK
2	Neutral, Market Weight	Consumer Discretionary SPDR, XLY
3	Neutral, Under Weight	Industrial SPDR, XLI
4	Neutral, Under Weight	Health Care SPDR, XLV
5	Neutral, Under Weight	Energy SPDR, XLE
6	Neutral, Under Weight	Consumer Staples SPDR, XLP
7	Neutral, Under Weight	Financial SPDR, XLF
8	Bearish, Under Weight	Materials SPDR, XLB
9	Bearish, Under Weight	Utilities SPDR, XLU

***Note: ambitious investors seeking to maximize returns (as opposed to a more conservative, moderate-weighting approach) may choose to avoid investments rated "Neutral" and focus only on investments in clearly-defined trends.***

Note that many traders also use the 20-day, 50-day, and 200-day **SMA**s (**simple moving averages**) as technical support and resistance levels.

<u>9 Major Stock Sectors Ranked, Symbol</u>	<u>CLOSE</u>	<u>SMA 20</u>	<u>SMA 50</u>	<u>SMA 200</u>
Technology SPDR, XLK	29.08	28.44	27.11	25.62
Consumer Discretionary SPDR, XLY	43.52	42.77	41.28	38.94
Industrial SPDR, XLI	37.14	37.27	36.05	34.09
Health Care SPDR, XLV	36.31	36.15	35.66	34.08
Energy SPDR, XLE	74.74	74.58	72.12	70.26
Consumer Staples SPDR, XLP	33.21	32.86	32.54	31.30
Financial SPDR, XLF	14.87	14.71	14.07	13.68
Materials SPDR, XLB	37.29	37.40	36.27	35.46
Utilities SPDR, XLU	34.96	34.91	35.03	34.01

**9 major U.S. stock sectors ranked in order of long-term relative strength:**



**Technology (XLK) Neutral, Market Weight.** The Relative Strength Ratio (XLK/SPY) has been rising since 1/10/12 toward its high of 10/17/11. Absolute price rose above the highs of the previous 11 years intraday on 2/29/12. Support 28.35, 27.93, 27.55, 26.65, 25.89, 25.66, 25.27, 24.01, 22.60, 22.47, 21.60, 20.01, and 19.51. Resistance 29.21.



**Consumer Discretionary (XLY) Neutral, Market Weight.** The Relative Strength Ratio (XLY/SPY) has been rising since 2/24/12 toward its high of 10/24/11. Absolute price rose above previous highs on 3/2/12. Support 42.54, 42.06, 41.21, 40.83, 39.97, 39.23, 38.75, 36.33, 33.07, 32.66, 31.70, 29.80, 28.64, 28.21, and 26.62. Resistance: none.



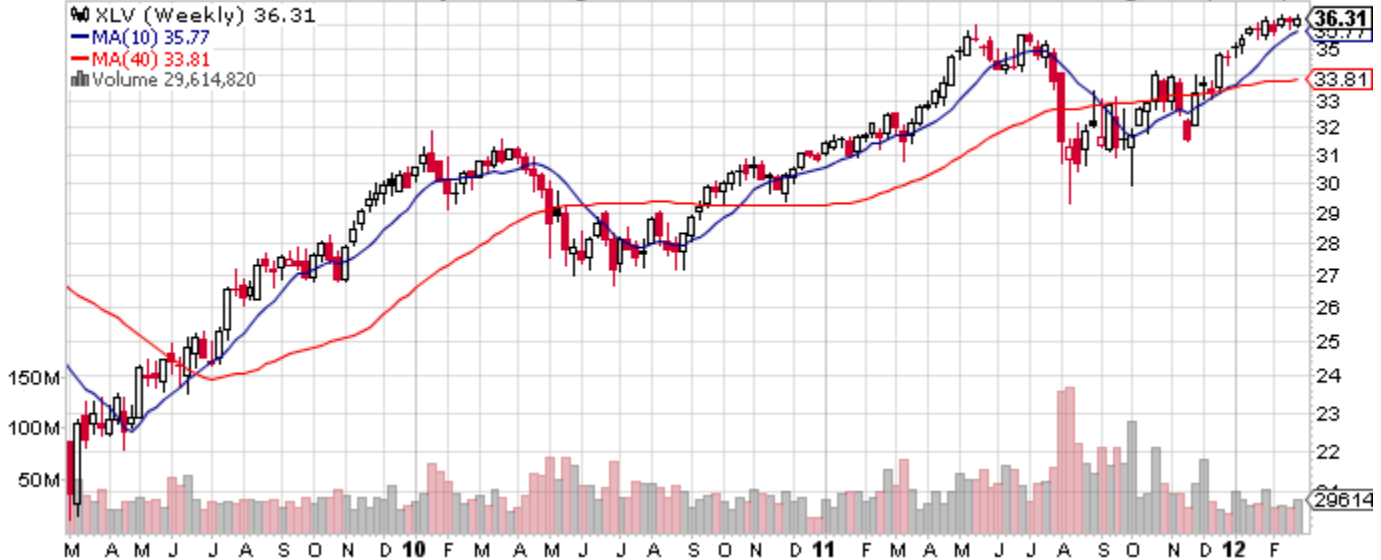
**Industrial (XLI) Neutral, Under Weight.** The Relative Strength Ratio (XLI/SPY) fell further after breaking down below its 50-day SMA and below its lows of the previous 7 weeks on 2/28/12, signaling a downside correction. Absolute price fell below the lows of the previous 9 trading days on 3/2/12, confirming a downside correction. Support 36.71, 36.00, 35.77, 34.16, 33.46, 32.22, 31.08, and 27.67. Resistance 37.66, 38.43, and 39.98.

**XLV (Health Care Select Sector SPDR) NYSE**

2-Mar-2012

Open 36.01 High 36.48 Low 35.92 Close 36.31 Volume 29.6M Chg +0.12 (+0.33%) ▲

© StockCharts.com



**Health Care (XLV) Neutral, Under Weight.** The Relative Strength Ratio (XLY/SPY) fell below its lows of the previous 6 months on 2/23/12, continuing a preexisting, relatively weak trend. XLY/SPY remains bearishly below both 50-day and 200-day SMAs. The 50-day SMA remains bullishly above the 200-day SMA--but only slightly. Absolute price rose above the highs of the previous 9 months intraday on 2/29/12 before reversing to close lower. Support 35.85, 35.62, 35.45, 35.15, 34.71, 34.42, 31.68, 30.11, 29.64, 28.00, and 27.49. Resistance 36.57 and 37.89.

**XLE (Energy Select Sector SPDR) NYSE**

2-Mar-2012

Open 75.93 High 76.31 Low 74.44 Close 74.74 Volume 73.6M Chg -1.49 (-1.95%) ▼

© StockCharts.com



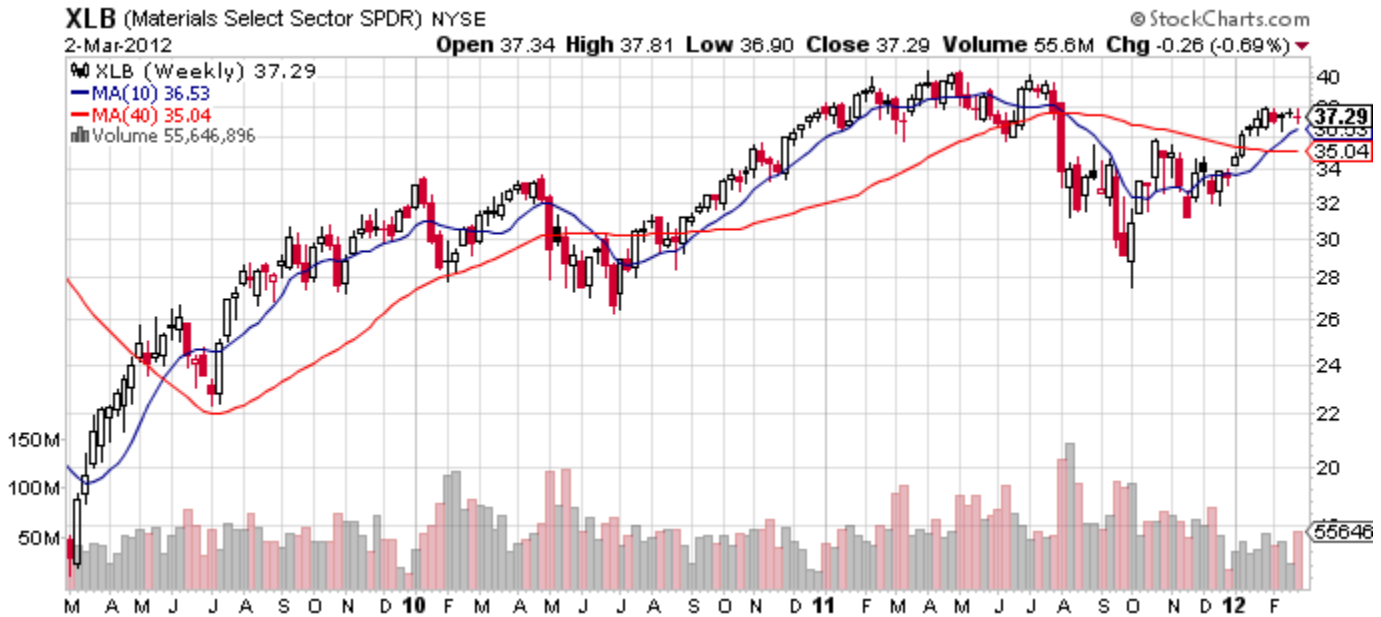
**Energy (XLE) Neutral, Under Weight.** The Relative Strength Ratio (XLE/SPY) fell below the lows of the previous 12 trading days and fell below its 50-day SMA on 3/2/12, signaling a downside correction. XLE/SPY remains below its 200-day SMA, and the 50-day SMA has remained bearishly below 200-day SMA every day since 9/23/11, suggesting a persistent Bear trend. Absolute price fell below the lows of the previous 8 trading days on 3/2/12, confirming a downside correction. Support 72.56, 70.13, 68.74, 68.36, 63.83, 62.78, 54.26, 53.71, 50.33, 48.56, 46.16, and 43.66. Resistance 76.50, 77.85, 80.97, 83.27, and 91.42.



**Consumer Staples (XLP) Neutral, Under Weight.** The Relative Strength Ratio (XLP/SPY) turned choppy after falling below the lows of the previous 6 months on 2/8/12. XLP/SPY remains below its 50-day and 200-day SMAs, and the 50-day crossed below the 200-day SMA on 2/27/12. Absolute price rose above previous highs on 2/29/12. Support 32.70, 32.46, 31.84, 31.30, 30.19, 28.70, 28.07, 28.04, 27.76, 27.63, 27.46, 26.34, 25.30, and 24.95. Resistance: 33.35.



**Financial (XLF) Neutral, Under Weight.** The Relative Strength Ratio (XLF/SPY) remains above its 50-day SMA, below its 200-day SMA, and the 50-day SMA has remained bearishly below the 200-day SMA every day since 6/30/10, suggesting a persistent long-term Bear trend. Absolute price retraced part of previous losses from the low at 10.95 on 10/4/11 to the high at 14.86 on 2/9/12, but this upside correction has made very little net progress since 2/9/12. Support 14.39, 13.88, 13.58, 13.12, 12.86, 12.21, 11.73, 10.95, 10.83, 9.41, and 5.88. Resistance 14.97, 15.41, 15.70, 15.89, 16.01, 16.46, 16.75, 16.85, 17.20, and 17.87.



**Materials (XLB) Bearish, Under Weight.** The Relative Strength Ratio (XLB/SPY) fell below its lows of the previous 6 weeks on 2/29/12 and remains below both 50-day and 200-day SMAs. The 50-day SMA has remained bearishly below the 200-day SMA every day since 6/8/11, suggesting a persistent Bear trend. Absolute price has been correcting and consolidating since peaking at 37.97 on 2/3/11. Support 36.40, 36.10, 35.68, 34.23, 33.04, 31.41, 30.72, 27.77, 23.85, and 17.83. Resistance 37.97, 40.20, 40.72, 41.28, 43.04, 45.21, 45.21, and 46.54.



**Utilities (XLU) Bearish, Under Weight.** The Relative Strength Ratio (XLU/SPY) fell below its lows of the previous 6 months on 2/28/12, continuing its preexisting, relatively weak trend. Absolute price remains neutral, correcting and consolidating since peaking at 36.27 on 12/30/11. Price has traded in a narrow range since 1/25/12. Support 34.50, 34.14, 33.18, 31.94, 29.45, 27.91, 27.44, and 25.76. Resistance 35.27, 35.37, 36.27, 36.75, 38.58, 41.98, and 44.66.

## **Top 10 ETFs Ranked by Major Trend Relative Strength**

This list, updated each week, **outperformed the S&P 500 by 89 percentage points** since August, 2004, in simulation.

To arrive at my Top 10 ETF picks, I use a proprietary formula, somewhat similar conceptually to a six-month rate of price change filtered to dampen random noise. I rank all the ETFs in my universe from highest rate of change to lowest rate of change. Finally, I pick the highest ranked 10 ETFs each week. These **Top 10** are the best performing ETFs, the ones with the strongest major trend price momentum.

**Please note that this is a high-volatility strategy:** the stocks that go up the most when the stock market is in a Bullish trend often ***go down the most during market corrections to the downside***. In addition, please note that this Top 10 list is a research study and is not investment advice. Your use of this report means that you have read, understood, and accepted my Disclaimer on the last 2 pages of this report.

### **Weekly Rank, Name, Ticker Symbol**

99	,	Homebuilders SPDR, XHB
99	,	Thailand MSCI iS, THD
98	,	QQQ Nasdaq 100 Trust, QQQ
97	,	Technology DJ US, IYW
96	,	Biotech SPDR, XBI
96	,	Info Tech VIPERs, VGT
95	,	Technology SPDR, XLK
94	,	Consumer Discretionary SPDR, XLY
94	,	Growth VIPERs, VUG
93	,	Growth 1000 Russell, IWF

## **Ranked: 141 Select Exchange Traded Funds (ETFs)**

This list is filtered to exclude leveraged and inactive ETFs trading less than 90,000 shares a day on average. Ranks are based on my updated version of the Screening Method for Analysis of Relative Strength, using a proprietary formula, somewhat similar conceptually to a filtered six-month rate of price change. For details on Relative Strength, see my book, pages 604-609, or see my White Paper, "***Introduction to the Screening Method for Analysis of Relative Strength***", by Robert W. Colby, CMT, outlining some of the research behind my Relative Strength Ranking Method.

Research studies suggest that ETFs ranked in the top decile (highest tenth) of the list (with a rank of 90 and higher) may have a greater probability of outperforming the market in the months ahead.

**Weekly Rank, Name, Ticker Symbol**

99 , Homebuilders SPDR, XHB  
99 , Thailand MSCI iS, THD  
98 , QQQ Nasdaq 100 Trust, QQQ  
97 , Technology DJ US, IYW  
96 , Biotech SPDR, XBI  
96 , Info Tech VIPERs, VGT  
95 , Technology SPDR, XLK  
94 , Consumer Discretionary SPDR, XLY  
94 , Growth VIPERs, VUG  
93 , Growth 1000 Russell, IWF  
92 , Oil Fund PowerShares, DBO  
92 , LargeCap Blend S&P 100, OEF  
91 , Growth S&P 500/BARRA, IVW  
90 , Growth MidCap 400 B, IJK  
89 , Growth MidCap Russell, IWP  
89 , LargeCap VIPERs, VV  
88 , LargeCap 1000 R, IWB  
87 , MidCap S&P 400 SPDRs, MDY  
87 , Blend Total Market VIPERs, VTI  
86 , S&P 500 iS LargeCap Blend, IVV  
85 , S&P 500 SPDRs LargeCap Blend, SPY  
85 , MidCap S&P 400 iS, IJH  
84 , Oil, Crude, U.S. Oil Fund, USO  
83 , LargeCap Blend Russell 3000, IWV  
82 , Growth SmallCap VIPERs, VBK  
82 , Industrial SPDR, XLI  
81 , MidCap Russell, IWR  
80 , LargeCap Blend S&P=Weight R, RSP  
80 , Value MidCap S&P 400 B, IJJ  
79 , DIAMONDS (DJIA), DIA  
78 , Value S&P 500 B, IVE  
77 , Energy DJ, IYE  
77 , Value SmallCap S&P 600 B, IJS  
76 , South Africa Index, EZA  
75 , SmallCap S&P 600, IJR  
75 , Semiconductor iS IGW, SOXX  
74 , Growth SmallCap R 2000, IWO  
73 , Value LargeCap Dynamic PS, PWV  
73 , Growth BARRA Small Cap 600, IJT  
72 , Health Care SPDR, XLV  
71 , Brazil Index, EWZ  
70 , Value MidCap Russell, IWS  
70 , Value 1000 Russell, IWD

69 , REIT Wilshire, RWR  
68 , Energy SPDR, XLE  
68 , Hong Kong Index, EWH  
67 , Value VIPERs, VTV  
66 , Realty Cohen & Steers, ICF  
65 , Energy Global, IXC  
65 , Financial Services DJ, IYG  
64 , Small Cap VIPERs, VB  
63 , Consumer Staples SPDR, XLP  
63 , Dividend Appreciation Vipers, VIG  
62 , REIT VIPERs, VNQ  
61 , Mexico Index, EWW  
61 , Energy VIPERs, VDE  
60 , South Korea Index, EWY  
59 , Dividend DJ Select, DVY  
58 , Bond, 20+ Years Treasury, TLT  
58 , Malaysia Index, EWM  
57 , Sweden Index, EWD  
56 , Financial DJ US, IYF  
56 , Real Estate US DJ, IYR  
55 , SmallCap Russell 2000, IWM  
54 , Gold Shares S.T., GLD  
54 , Emerging Markets, EEM  
53 , Latin Am 40, ILF  
52 , Silver Trust iS, SLV  
51 , Financial SPDR, XLF  
51 , Value SmallCap VIPERS, VBR  
50 , Dividend SPDR, SDY  
49 , Financials VIPERs, VFH  
49 , Water Resources, PHO  
48 , Commodity Tracking, DBC  
47 , Emerging VIPERs, VWO  
46 , Dividend High Yield Equity PS, PEY  
46 , Chile MSCI iS, ECH  
45 , United Kingdom Index, EWU  
44 , Materials SPDR, XLB  
44 , Microcap Russell, IWC  
43 , Russia MV, RSX  
42 , Emerging 50 BLDRS, ADRE  
42 , Value SmallCap Russell 2000, IWN  
41 , Energy & Nat Res iS GS, IGE  
40 , Financial Preferred, PGF  
39 , Germany Index, EWG  
39 , Singapore Index, EWS  
38 , Global 100, IOO  
37 , Bond EmrgMkt JPM iS, EMB

37 , Bond, Corp, LQD  
36 , China 25 iS, FXI  
35 , Utilities SPDR, XLU  
35 , Preferred Stock iS, PFF  
34 , Small Cap EAFE MSCI iS, SCZ  
33 , Transportation Av DJ, IYT  
32 , Utilities VIPERs, VPU  
32 , Bond, TIPS, TIP  
31 , Bond, 10 Year Treasury, IEF  
30 , Growth EAFE MSCI, EFG  
30 , Dividend International, PID  
29 , Frontier Markets Guggenheim , FRN  
28 , Bond Muni ATM-Free S&P iS, MUB  
27 , Taiwan Index, EWT  
27 , Pacific ex-Japan, EPP  
26 , Capital Markets KWB ST, KCE  
25 , Global ex US ACWI iS, ACWX  
25 , Semiconductor SPDR, XSD  
24 , Bond, High-Yield Corporate, HYG  
23 , Switzerland Index, EWL  
23 , Basic Materials DJ US, IYM  
22 , Networking, IGN  
21 , Europe 350 S&P Index, IEV  
20 , EAFE Index, EFA  
20 , Bond, High-Yield Junk, JNK  
19 , Japan Index, EWJ  
18 , Telecom DJ US, IYZ  
18 , Canada Index, EWC  
17 , Indonesia MV, IDX  
16 , Bond, Aggregate, AGG  
15 , Pacific VIPERs, VPL  
15 , Value EAFE MSCI, EFV  
14 , Australia Index, EWA  
13 , Turkey MSCI iS, TUR  
13 , Netherlands Index, EWN  
12 , Bond Ex-US Treas, BWX  
11 , European VIPERs, VGK  
11 , Bond, 1-3 Year Treasury, SHY  
10 , Bond Treasury Short-Term iS, SHV  
9 , India Earnings WTree, EPI  
8 , France Index, EWQ  
8 , EMU Europe Index, EZU  
7 , China LargeCap Growth G D H USX PS, PGJ  
6 , Belgium Index, EWK  
6 , India PS, PIN  
5 , Agriculture DB PS, DBA

- 4 , Italy Index, EWI
- 4 , Austria Index, EWO
- 3 , Metals & Mining SPDR, XME
- 2 , Spain Index, EWP
- 1 , Bear, Short S&P 500, SH
- 1 , WilderHill Clean Energy PS, PBW

**1235 Exchange Traded Funds (ETFs) and Closed-End Listed Funds Ranked:**

(includes short, leveraged, and inactive funds trading less than 90,000 shares a day on average, so use great caution when trading).

<u>Weekly Rank, Ticker Symbol, Name</u>		
100	TYH	DXN DLY TC BUL3X
100	QLD	ULTRA QQQ PROSHARES ETF
100	ROM	ULTRA TECHNOLOGY PROSHARES ETF
100	UCC	ULTRA CONSUMER SERVICES ETF
100	BGU	DXN DL LC BUL3X
100	UKF	PROSHS ULTRA RUSSELL1000 GROWTH ETF
100	KED	KAYNE ANDERSON ENERGY ORD
99	BBH	BIOTECH HOLDRS
99	IBB.O	ISHR NASDAQ BIO
99	UGE	ULTRA CONSUMER GOODS ETF
99	TTF	THAI ETF
99	PJP	PWRSHRS PHARM ETF
99	SSO	ULTRA S&P500 PROSHARES ETF
99	PMR	POWERSHARES DYNAMIC RETAIL PRTFL ETF
99	DDM	ULTRA DOW30 PROSHARES ETF
99	UGA	United States Gasoline Fund
99	RSU	RYDEX 2X S&P 500 ETF
99	FHY	FIRST TR STR FD
99	TMF	DXN 30YR TRBUL3X
98	DYY	PowerShares DB Commodity Double Long ETN
98	XRT	SPDR SP RETAIL
98	BLJ	BLACKROCK NEW JERSEY MUNICIPAL BD CF
98	XHB	SPDR S&P HOMEBUILDERS ETF
98	FPX	FIRST TRUST IPOX 100 INDEX ETF
98	RXL	ULTRA HEALTH CARE PROSHARES ETF
98	THD	ISHR THAI IN MKT
98	UKW	PROSHS ULTRA RUSS MIDCAP GROWTH ETF
98	UXI	ULTRA INDUSTRIALS ETF
98	QQQ.O	QQQ Nasdaq 100 Trust, QQQ.O
98	PFD	FLAHERTY CRUMRINE PEF INCOME CF
98	NCO	NUVEEN CALIF MUNI MARKET OPPOR CF
97	IYW	ISHARES DJ US TECHNOLOGY SCTR IDX ETF
97	XPH	SPDR S&P PHARMACEUTICALS ETF
97	XBI	SPDR S&P BIOTECH ETF
97	MVV	ULTRA MIDCAP400 PROSHARES ETF
97	HQL	H&Q LIFE SCIENCES INVESTOR CF
97	DHG	DWS DREMAN VALUE INCOME EDGE FD ETF

97	, USD	, ULTRA SEMICONDUCTORS ETF
97	, VCV	, VAN KAMPEN CALIF VALUE MUNICIPAL ETF
97	, MJI	, BLACKROCK MUNIYLD NEW JERSEY INSD CF
97	, VGT	, VANGUARD INFORMATION TECHNOLOGY ETF
97	, NCU	, NUVEEN CALIF PREMIUM INCM MUNI CF
97	, ENX	, EATON VANCE INSURED NEW YORK MUNI CF
97	, BNJ	, BLACKROCK NEW JERSEY MUNICPL INCM CF
96	, NUC	, NUVEEN CALIF QUALITY INCM MUNI CF
96	, UVG	, PROSHS ULTRA RUSSELL1000 VALUE ETF
96	, XLK	, TECHNOLOGY SELEC SPDR ETF
96	, IHE	, ISHARES DOW JONES US PHARMA IDX ETF
96	, CXH	, MFS INVESTMENT GRADE MUNICIPAL CF
96	, RKH	, ML REGIONL BNK HOLDERS ETF
96	, FPT	, FEDERATED PREMIER INTERMIDAT MUNI CF
96	, UVU	, PROSHS ULTRA RUSS MIDCAP VALUE ETF
96	, ITB	, ISHARES DOW JONES US HM CONS IDX ETF
96	, RCD	, RYDEX S&P EQL WGT CNSMR DISCRTRY ETF
96	, EVN	, EATON VANCE MUNICIPAL INCOME CF
96	, MPA	, BLACKROCK MUNIYLD PENNSYLVANIA CF
95	, IIM	, MORGAN STANLEY MUNICIPAL INCOME CF
95	, BKN	, BLACKROCK INVESTMENT QLTY MUNICPL CF
95	, CEV	, EATON VANCE CALIF MUNICIPAL INCM CF
95	, XLY	, CONSUMER DISCRE SPDR ETF
95	, PDT	, JH PATR PREM II
95	, NVC	, NUVEEN CALIF SEL
95	, VCR	, VANGUARD CONSUMER DISCRETIONARY ETF
95	, JKE	, ISHR MGSTR LGTH
95	, NCP	, NUVEEN CALIF PERFORMANC PLUS MUNI CF
95	, IXN	, iSHARES S&P GLOB TEC ETF
95	, PML	, PIMCO MUNICIPAL INCOME II CF
95	, RPV	, RYDEX S&P 500 PURE VALUE ETF
94	, NUJ	, NUVEEN NEW JERSEY DIV ADV MUNI 2 CF
94	, NQC	, NUVEEN CALIF INVMNT QUALITY MUNI CF
94	, ONEQ	, FIDELITY NASDAQ COMPOSITE INDX ETF
94	, TY	, TRI CONTINENTAL
94	, IGM	, ISHARES S&P GSTI TECHNOLOGY INDX ETF
94	, BFY	, BLACKROCK NY MUNICIPAL INCOME II CF
94	, PNF	, PIMCO NEW YORK MUNICIPAL INCOME CF
94	, IQC	, MORGAN STANLEY QUALITY MNCPL INCM CF
94	, BFK	, BLACKROCK MUNICIPAL INCOME CF
94	, PEJ	, PWRSHRS LEIS ETF
94	, DIG	, ULTRA OIL & GAS PROSHARES ETF
94	, PEZ	, PWRSHRS DYNMIC CNSUMR DISC SCTR ETF
94	, UCO	, ProShares Ultra DJ-AIG Crude Oil ETF
93	, BFZ	, BLACKROCK CALIFORNIA MUNICPL INCM CF
93	, PXE	, POWERSHARES DYNAMIC EXPLRTN PRDN ETF
93	, PIA	, MORGAN STANLEY MUNICIPAL PREM INCOM CF
93	, MYJ	, BLACKROCK MUNIYIELD NEWJERSEY CF
93	, BWC	, BLACKROCK WORLD INVESTMENT CF
93	, ICS	, MORGAN STANLEY INSURED CALIFORNIA CF
93	, URE	, ULTRA REAL ESTATE ETF
93	, BBK	, BLACKROCK MUNICIPAL BOND TRUST CF
93	, HQH	, H&Q HEALTHCARE INVESTORS CF
93	, IYC	, iSHARES DJ US COM SER ETF

93	, SAA	, PROSHARES TR ULTRA SMALLCAP600 ETF
93	, VUG	, VANGUARD GROWTH ETF
92	, QTEC	, FIRST TR NAS 100 TECH SECTR INDX ETF
92	, HAV	, HELIOS ADV INCM
92	, NYH	, EATON VANCE INSURED NY MUNI BD II CF
92	, PNQI	, PS NASDAQ INTRNT
92	, MNE	, BLACKROCK MUNI NEWYORK INTERM DUR CF
92	, IQN	, MORGAN STANLEY YK QLTY MUNICI SEC CF
92	, MNP	, WESTERN ASST MUNCPL PARNRS CF
92	, EZM	, WISDOMTREE MIDCAP EARNINGS ETF
92	, MAB	, EATON VANCE INSURD MASSACHUS MUNI CF
92	, NKX	, NUVEEN INSURED CALIF TAX FREE ADV CF
92	, MQT	, BLACKROCK MUNIYLD QUALITY FUND II CF
92	, GXG	, GBL XI FTSE C020
91	, QQEW	, FIRST TR NAS 100 EQL WEGHTD INDX ETF
91	, IIC	, MORGAN STANLEY CALIFORNIA INSURED CF
91	, MYC	, BLACKROCK MUNIYIELD CALIFORNIA CF
91	, VMO	, VAN KAMPEN MUNICIPAL OPPORTUNITY ETF
91	, FXD	, FIRST TR CONS DSCRTRNY ALPHADDEX ETF
91	, VTJ	, VAN KAMPEN NEW JERSEY MUNICIPALS ETF
91	, NXJ	, NUVEEN NEW JERSEY DIV ADVAN MUNI CF
91	, NAC	, NUVEEN CALIFORNIA DIVIDEND ADV CF
91	, MAV	, PIONEER MUNICIPAL HIGH INCOME ADV CF
91	, CSD	, CLAYMORE CLEAR SPIN OFF ETF
91	, IQI	, MORGAN STANLEY QUALITY MUNICIPAL CF
91	, PKW	, POWERSHARES BUYBACK ACHIEVERS ETF
91	, IWF	, iSHARES RU 1000 GR ETF
90	, FXZ	, FIRST TRUST MATERIALS ALPHADDEX ETF
90	, NZH	, NUVEEN CALIF DIV ADVAN MUNI 3 CF
90	, MVT	, BLACKROCK MUNIVEST II CF
90	, RTL	, ISHS FTSE NAREIT RETAIL INDEX ETF
90	, PWB	, PWRSHRS LARCAP GR ETF
90	, RNP	, COHEN STEERS REIT PREFER INCOME CF
90	, ROI	, WSDM LC GRTH FD
90	, HYI	, HIGH YIELD INCOME CF
90	, MZF	, MBIA CAPITAL/CLAYMORE DURATION CF
90	, DBO	, PowerShares DB Oil Fund
90	, XLG	, RYDEX RUSSELL TOP50 ETF
90	, TYD	, DXN 10YR TRBUL3X
89	, MCA	, MUNIYIELD CALIFORNIA INSURED CF
89	, RYJ	, CLAYMORE RAYMONDS JAMES ETF
89	, USL	, United States 12 Month Oil Fund
89	, EVY	, EATON VANCE NEW YORK MUNCIPL INCM CF
89	, IWZ	, iSHARES RUSS 3000GW ETF
89	, QQXT	, FT NASDAQ100 EX TCHNO SCTR INDX ETF
89	, JKG	, iSHARES MID CORE ETF
89	, HMH	, MINI HANG SENG INDEX
89	, PMA	, POWERSHARES ACTIVE MEGA CAP ETF
89	, FTA	, FIRST TR LRG CP VAL OPP ALPHADDEX ETF
89	, OTR	, CLYMR OCEAN TOMO GROWTH INDEX ETF
89	, RFG	, RYDEX S&P MIDCAP 400 PURE GROWTH ETF
88	, MGU	, MACQUARIE GBL INFRASTRUCTURE CF
88	, CSQ	, CALAMOS STRATEGIC TOTAL RETURN ETF
88	, NCL	, NUVEEN INSURED CALIF PREM INCM II CF

88	,	FAB	,	FIRST TR MULTI CP VALUE ALPHADDEX ETF
88	,	MYM	,	BLACKROCK MUNIYLD MICHIGAN INSD CF
88	,	IHF	,	ISHARES DOW JONES US HLTH CRE IDX ET
88	,	BTA	,	BLACKROCK LONG TERM MUNICIPL ADV CF
88	,	RTH	,	RETAIL HOLDRS
88	,	BLE	,	BLACKROCK MUNICIPAL INCOME II CF
88	,	IGV	,	ISHARES S&P GSTI SOFTWARE INDEX ETF
88	,	BBF	,	BLACKROCK FLORIDA MUNICIPAL INCM CF
88	,	NUM	,	NUVEEN MICHIGAN QUALITY INCM 2 CF
88	,	AMJ	,	JPM ALERIAN MLP
87	,	VIM	,	VAN KAMPEN TRUST INSURE MUNICIPL ETF
87	,	FDV	,	FIRST TRUST DB STRTGC VALUE INDX ETF
87	,	BYM	,	BLACKROCK INSURED MUNICIPAL INCM CF
87	,	CZA	,	CLYMR ZACKS MID CAP CORE ETF
87	,	MUI	,	BLACKROCK MUNI INTERM DUR CF
87	,	EPS	,	WISDOMTREE EARNINGS 500 ETF
87	,	FMO	,	FIDUCIARY/CLAYMORE MLP OPPORTUNTY CF
87	,	RXI	,	ISHARES S&P GB CONS DSCRTRY SCTR ETF
87	,	OLO	,	PowerShares DB Crude Oil Long ETN
87	,	PFO	,	FLAHERTY CRUMRIN PREF INCOM OPPO CF
87	,	BJK	,	MARKET VCTRS GMG
87	,	NXC	,	NUVEEN CALIF SELECT TAX-FREE INCM CF
86	,	PDP	,	POWERSHARES DWA TECHNICAL LEADERS ETF
86	,	VOT	,	VANGUARD MID-CAP GROWTH ETF
86	,	CMU	,	MFS HIGH YIELD MUNICIPAL CF
86	,	BSD	,	BLACKROCK STRATEGIC MUNICIPAL CF
86	,	BQH	,	BLACKROCK NEW YORK MUNICIPAL BOND CF
86	,	PXI	,	PWRSHRS DYNMIC ENRGY SEC ETF
86	,	PMX	,	PIMCO MUNICIPAL INCOME III CF
86	,	CYE	,	BLACKROCK CORPRTE HIGH YLD III CF
86	,	NXK	,	NUVEEN NEW YORK DIV ADVAN MUNI CF
86	,	EXT	,	WISDOMTREE TOTAL EARNINGS ETF
86	,	FXH	,	FIRST TRUST HEALTH CARE ALPHADDEX ETF
86	,	HPI	,	JOHN HANCOCK PREFERRED INCOME CF
85	,	BIE	,	BLACKROCK FLORIDA MUNICIPAL BOND CF
85	,	EMI	,	EATON VANCE MICHIGAN MUNI INCOME CF
85	,	VCF	,	DELAWARE INVSMNT COL MUNPL INCM ETF
85	,	PXQ	,	PWRSHRS NETWRK ETF
85	,	IRL	,	NEW IRELAND CF
85	,	EIV	,	EATON VANCE INSURED MUNI BOND II CF
85	,	NVX	,	NUVEEN CALIF DIV ADVAN MUNI 2 CF
85	,	DMF	,	DREYFUS MUNI
85	,	VKL	,	VAN KAMPEN SELECT SECTORS MUNICIPAL CF
85	,	HIH	,	HELIOS HIGH INCM
85	,	NNB	,	NUVEEN VIRGINIA DIV ADVAN MUNI 2 CF
85	,	OEF	,	iSHARES S&P100 ETF
84	,	ITA	,	ISHARES DOW JONES US AERO&DF IDX ETF
84	,	EMM	,	SPDR DJ WILSHIRE MID CAP ETF
84	,	OIL	,	Goldman Sachs Crude Oil Total Return ETN
84	,	MYI	,	BLACKROCK MUNIYIELD INSD CF
84	,	IVW	,	ISHARES S&P 500 GROWTH INDEX ETF
84	,	VKI	,	VAN KAMPEN ADVANTAGE MUNICIPAL ETF
84	,	VPV	,	VAN KAMPEN PENNSYLVANIA VALUE ETF
84	,	GAM	,	GENERAL AMERICAN INVESTORS CF

84	,	XOP	,	SPDR S&P OIL & GAS EXPL & PROD ETF
84	,	NVJ	,	NUVEEN OHIO DIVIDEND ADVAN MUNI 3 CF
84	,	VKQ	,	VAN KAMPEN MUNICIPAL ETF
84	,	GUT	,	GABELLI UTILITY CF
84	,	IJK	,	ISHARES S&P MIDCAP 400 GR FUND ETF
83	,	JKH	,	iSHARES MID GRWTH ETF
83	,	MTK	,	MORGAN STANLEY TECHNOLOGY ETF
83	,	IWP	,	iSHARES RUS MIDGRW ETF
83	,	MHN	,	BLACKROCK MUNIHLDG NEW YORK INSRD CF
83	,	KRE	,	KBW REGIONAL BANKING ETF
83	,	PZC	,	PIMCO CALIFOR MUNI INCM III CF
83	,	MUC	,	BLACKROCK MUNIHLDG CALIFORNI INS ETF
83	,	DTF	,	DTF TAX FREE INCOME CF
83	,	MYF	,	BLACKROCK MUNIYIELD FLORIDA CF
83	,	FNX	,	FIRST TRUST MID CAP COR ALPHADDEX ETF
83	,	KTF	,	DWS MUNICIPAL INCOME CF
83	,	IMC	,	MORGAN STANLEY MUNICIPAL BOND ETF
82	,	IQT	,	MORGAN STANLEY QLTY MUNICIPAL INV TR
82	,	MEN	,	BLACKROCK MUNIENHANCED CF
82	,	HYV	,	BLACKROCK CORPORATE HIGH YIELD V CF
82	,	UKK	,	PROSHS ULTRA RUSSELL2000 GROWTH ETF
82	,	PYZ	,	PWRSHRS DYNMIC BSC MATRLS SEC ETF
82	,	NCA	,	NUVEEN CALIFORNIA MUNICIPAL VALUE CF
82	,	MQY	,	BLACKROCK MUNIYLD QUALITY FUND CF
82	,	TYY	,	TORTOISE ENERGY CAPITAL CF
82	,	NCB	,	NUVEEN CAL MUN 2
82	,	BTF	,	BOULDER TOTAL RETURN ETF
82	,	PYN	,	PIMCO NEW YORK MUN INCOME III CF
82	,	MYD	,	BLACKROCK MUNIYIELD CF
81	,	NPC	,	NUV INS CA PREM
81	,	BNY	,	BLACKROCK NY MUNICIPAL INCM TRUST CF
81	,	NUN	,	NUVEEN NEW YORK QUALITY INCM MUNI CF
81	,	NJV	,	NUVEEN NJ MUN VL
81	,	NPY	,	NUVEEN INSURED PENNSYL PREM INCM CF
81	,	XRO	,	CLAYMORE/ZACKS SCTR ROTATION ETF
81	,	VV	,	RUSSELL 1000 VALUE
81	,	HIS	,	BLACKROCK HIGH INCOME SHARES CF
81	,	PTH	,	PWRSHRS DYNMIC HEATHCARE SEC ETF
81	,	PPH	,	ML PHARMACEUTICAL HOLDRS
81	,	JKD	,	iSHRES LRG CORE ETF
81	,	MIY	,	BLACKROCK MUNIYLD MICHIGAN INSRD CF
81	,	PSW	,	BLACKROCK PRFD & CORPT INCM STRT CF
80	,	BAF	,	BLACKROCK FLA INSURED MUNICI INCM CF
80	,	MUJ	,	BLACKROCK MUNIHLDG NEWJERSEY INSD CF
80	,	IYY	,	iSHARES DJ US TOT ETF
80	,	HPF	,	JOHN HANCOCK PREFERRED INCOME II CF
80	,	ELR	,	SPDR DJ WILSHIRE LARGE CAP ETF
80	,	EDV	,	VANGUARD EXTENDED DURATION ETF
80	,	IWB	,	iSHARES RU 1000 ETF
80	,	JDD	,	NUVEEN DIVERSIFIED DIVIDEND INCM CF
80	,	NPF	,	NUV PRM MUN INC
80	,	EZY	,	WISDOMTREE LOW P/E ETF
80	,	FXR	,	FIRST TR INDL PROD DRBL ALPHADDEX ETF
80	,	IYJ	,	iSHARES DJ IND SEC ETF

79	, RYT	, RYDEX S&P EQUAL WEIGHT TECHNOLOGY ETF
79	, MDY	, SPDR MIDCAP 400 ETF
79	, KLD	, iSHARES SEL SOC ETF
79	, VTI	, VANGUARD TOTAL STOCK MARKET ETF
79	, NMP	, NUVEEN MICHIGAN PREMIUM INCM MUNI CF
79	, NVN	, NUVEEN NY SELECT QUALITY INCM CF
79	, MUH	, BLACKROCK MUNIHOLDINGS II CF
79	, IVV	, iSHARES S&P 500 ETF
79	, BTO	, HANCOCK BK THR
79	, SPY	, SPDR LARGCAP ETF
79	, DLN	, WISDOMTREE LARGE CAP DIVIDEND ETF
79	, IJH	, iSHARES S&P MD 400 ETF
78	, NXE	, NUVEEN ARIZONA DIV ADVAN MUNI 3 CF
78	, NGB	, NUVEEN VA DIV
78	, RWJ	, REVENUESHARES SC
78	, FMN	, FEDERATED PREMIER MUNICIPL INCOME CF
78	, MHD	, BLACKROCK MUNIHOLDINGS CF
78	, RFV	, RYDEX S&P MIDCAP 400 PURE VALUE ETF
78	, NQN	, NUVEEN NY INV
78	, NRB	, NUVEEN NORTH CARO DIV ADV MUNI CF
78	, ISI	, iSHARES 1500 ETF
78	, USO	, United States Oil Fund
78	, IWV	, iSHARES RUSS 3000 INDEX ETF
78	, HSA	, SWIRE PACIFIC LTD A
78	, TMW	, SPDR DJ WILSHIRE TOTAL MARKET ETF
77	, RPG	, RYDEX S&P 500 PURE GROWTH ETF
77	, PCK	, PIMCO CALIFORNIA MUNICI INCOME II CF
77	, NBO	, NEUBERGER BERMAN NY INTERM MNCPL CF
77	, CXE	, MFS HIGH INCOME MUNICIPAL CF
77	, TF	, THAI CAPITAL ETF
77	, MFL	, BLACKROCK MUNIHLDGS FLORIDA INSD CF
77	, COY	, BLACKROCK CORPORATE HIGH YIELD CF
77	, DTD	, WISDOMTREE TOTAL DIVIDEND ETF
77	, MVF	, BLACKROCK MUNIVEST CF
77	, DTN	, WISDOMTREE DIVIDEND TOP 100 ETF
77	, TAO	, CLMR ALPSH CH RL
77	, NPX	, NUVEEN INS PREM
76	, OIA	, MORGAN STANLEY MUNI INCOME OPPOR CF
76	, VBK	, VANGUARD SMALL-CAP GROWTH ETF
76	, SMH	, SEMICONDUCTOR HOLDRS
76	, RJN	, ELEMENTS Rogers International Commodity Energ
76	, RWK	, REVENUESHARES MC
76	, RWL	, REVENUESHARES LC
76	, VTN	, VAN KAMPEN NEW YORK MUNICIPALS ETF
76	, PCQ	, PIMCO CALIFORNIA MUNICIPAL INCOME CF
76	, NQS	, NUVEEN SELECT QUALITY MUNICIPAL CF
76	, UTG	, REAVES UTILITY INCOME CF
76	, NQJ	, NUVEEN NEW JERSEY INVMNT QUALITY CF
76	, IFNA	, ISHS FTSE EPRA NAREIT NA IDX ETF
75	, MFT	, BLACKROCK MUNIYIELD FLORIDA INSRD CF
75	, PAI	, WESTERN ASSET INCOME CF
75	, FIW	, FIRST TRUST ISE WATER INDEX ETF
75	, VO	, VANGUARD MID-CAP ETF
75	, VYM	, VANGUARD HIGH DIVIDEND YIELD ETF

75	,	MFD	,	MACQUARIE FIRST GLBL INFR UTL DIV CF
75	,	XLI	,	INDUSTRIAL SELEC SPDR ETF
75	,	NPT	,	NUVEEN PREMIUM INCOME MUNICIPAL 4 CF
75	,	NPP	,	NUVEEN PERFORM
75	,	PIV	,	POWERSHARES VALUE LINE TIMELINSS ETF
75	,	LEO	,	DREYFUS STRATEGIC MUNICIPALS CF
75	,	SCD	,	LMP CAPITAL & INCM CF
75	,	RGI	,	RYDEX S&P EQUAL WGHT INDTRL ETF
74	,	NKL	,	NUVEEN INSURED CALIF DIV ADV MUNI CF
74	,	MYN	,	BLACKROCK MUNIYLD NEWYORK INSD CF
74	,	VXF	,	VANGUARD EXTENDED MARKET ETF
74	,	IEO	,	ISHARES DOW JONES US OIL&GAS EXP ETF
74	,	KST	,	DWS STRATEGIC INCOME CF
74	,	IWR	,	iSHARES RUS MID ETF
74	,	NMI	,	NUVEEN MUNICIPAL INCOME CF
74	,	HTD	,	JOHN HANCOCK TAX ADVANTAGED INCM CF
74	,	VOQ	,	VAN KAMPEN OHIO QUALITY MUNICIPL ETF
74	,	IYK	,	iSHARES DJ US CON GDS ETF
74	,	RSP	,	RYDEX S&P EQ ETF
74	,	RZG	,	RYDEX S&P SMALLCP 600 PURE GRWTH ETF
73	,	JRS	,	NUVEEN R EST INM
73	,	RYH	,	RYDEX S&P EQUAL WEIGHT HLTH CARE ETF
73	,	IFAS	,	ISHRS FTSE EPRA NAREIT ASIA IDX ETF
73	,	IMS	,	MORGAN STANLEY INSURED MNCPL SECS CF
73	,	FBT	,	FIRST TRUST BIOTECH INDEX CF ETF
73	,	NFZ	,	NUVEEN ARIZONA DIV ADVAN MUNI CF
73	,	DSM	,	DREYFUS STRAT
73	,	NQP	,	NUVEEN PENNSYL INVMNT QUALITY CF
73	,	FEX	,	FIRST TR LARGE CAP CORE ALPHADEX ETF
73	,	VMM	,	DELAWARE INVESTMENTS MINNESOTA II ET
73	,	DNP	,	DNP SELECT INCOME ETF
73	,	NNJ	,	NUVEEN NJ PREM
72	,	EIP	,	EATON VANCE INSURED PENNSYLVANIA CF
72	,	OIC	,	MORGAN STANLEY MUN INCM OPPOR III CF
72	,	PKB	,	POWERSHARES DYNAMIC BLDG CONSTRN ETF
72	,	NQU	,	NUVEEN QUALITY INCOME MUNICIPAL CF
72	,	RFI	,	COHEN STEERS
72	,	HYT	,	BLACKROCK CORPORATE HIGH YIELD VI CF
72	,	PBE	,	PWRSHRS BIOTEC ETF
72	,	PMO	,	PUTNAM MUNI
72	,	IJJ	,	ISHARES S&P MIDCAP 400 VAL INDEX ETF
72	,	FXO	,	FIRST TRUST FINANCIALS ALPHADEX ETF
72	,	DIA	,	DIAMOND ETF
72	,	IVE	,	ISHARES S&P 500 VALUE INDX FUND ETF
72	,	VBF	,	VAN KAMPEN BOND ETF
71	,	MSY	,	MORGAN STANLEY HIGH YIELD ETF
71	,	PSR	,	PS AC US REAL EST
71	,	HPS	,	JOHN HANCOCK PREFERRED INCOME III CF
71	,	RNJ	,	BLACKROCK NEWJERSE INVES QUAL MUN CF
71	,	MUA	,	BLACKROCK MUNIASSETS CF
71	,	NAD	,	NUVEEN DIVIDEND ADVANTAGE MNCPL CF
71	,	NNC	,	NUVEEN NC PREMIUM INCOME MUNI CF
71	,	JPS	,	NUVEEN QUALITY PREFERRED INCOME 2 CF
71	,	IYH	,	iSHARES DJ US HTH CRE ETF

71	, NXZ	, NUVEEN DIVIDEND ADVATAGE MUNI 2 CF
71	, HYB	, NEW AMERICA HIGH INCOME CF
71	, NZW	, NUVEEN MICHIGAN DIV ADVAN MUNI CF
70	, NXM	, NUVEEN PENNSYLVANIA DIV ADV MUNI CF
70	, VGM	, VAN KAMPEN TR INVSTMNT GRADE MUNI ET
70	, UHN	, United States Heating Oil Fund
70	, IYE	, iSHARES DJ ENR ETF
70	, IJS	, ISHARES S&P S CAP600 VAL FND ETF
70	, JPC	, NUVEEN MULTI STRATEGY INC & GRWTH CF
70	, NZF	, NUVEEN DIVIDEND ADVANTAGE MUNI 3 CF
70	, PBS	, PS DYN MEDIA PF
70	, BHY	, BLACKROCK HIGH YIELD CF
70	, RQI	, COHEN STEERS QUAL INCOME REALTY CF
70	, NQM	, NUVEEN INVESTMENT QUALITY MUNI CF
70	, EZA	, iSHARES SOUT AFR ETF
69	, PTF	, PWRSHRS DYNMIC TECHNOLOGY SEC ETF
69	, IJR	, iSHARES S&P SM 600 ETF
69	, EIA	, EATON VANCE INSURED CALIFORNIA II CF
69	, NAN	, NUVEEN NY DIV ADVNTAGE MUNCPL ETF
69	, PTM	, E-TRACS CMCI Long Platinum ETN
69	, JHP	, NUVEEN QUALITY PREFERRED INCOME 3 CF
69	, NVY	, NUVEEN PENNSYL DIV ADV MUNI 2 CF
69	, IWO	, ISHARES RUSSELL 2000 GROWTH INDX ETF
69	, EIO	, EATON VANCE INSURED OHIO MUNI BND CF
69	, MUS	, BLACKROCK MUNIHOLDINGS INSURED CF
69	, PWV	, PWRSHRS LARCAP ETF
69	, IJT	, ISHARES S&P S CAP600 GR FUND ETF
69	, RYF	, RYDEX S&P EQUAL WEIGHT FINANCIAL ETF
68	, DBE	, PowerShares Deutsche Bank Energy Fund
68	, JKK	, iSHARES SML GRWTH ETF
68	, UWM	, PROSHARES TR ULTRA RUSSELL2000 ETF
68	, KYE	, KAYNE ANDERSON ENERGY TOTAL RETRN CF
68	, NKR	, NUVEEN ARIZONA DIV ADVAN MUNI 2 CF
68	, OIB	, MORGAN STANLEY MUN INCOM OPPOR II CF
68	, PRF	, POWERSHARES FTSE RAFI ETF
68	, JTP	, NUVEEN QUALITY PREFERRED INCOME CF
68	, MHF	, WESTERN ASST MUNCPL HGH INCM CF
68	, BHK	, BLACKROCK CORE BOND CF
68	, BDT	, BLACKROCK STR DV
68	, UTF	, COHEN STEERS SELECT UTILITY CF
67	, DHS	, WISDOMTREE HIGH YIELDING EQUITY ETF
67	, JTA	, NUVEEN TAX-ADVANTAGED TOTAL RETN CF
67	, TYG	, TORTOISE ENERGY INFRASTRUCTURE ETF
67	, VIS	, VANGUARD INDUSTRIALS ETF
67	, DSI	, ISHARES KLD 400 SOCIAL INDEX ETF
67	, ESD	, WESTERN ASST EMER MKT DEBT CF
67	, UPW	, ULTRA UTILITIES PROSHARES ETF
67	, EMD	, WESTERN ASST EMER MKT INCM CF
67	, VHT	, VANGUARD HEALTH CARE ETF
67	, EVO	, EATON VANCE OHIO MUNICIPAL INCOME CF
67	, NBJ	, NUVEEN OHIO DIVIDEND ADV MNCPL 2 CF
67	, IQM	, MORGAN STANLEY QLTY MUNICIPL SECU CF
66	, FYX	, FIRST TR SMALL CAP CORE ALPHADIX ETF
66	, MUE	, BLACKROCK MUNIHLDGS INSD II CF

66	, UGL	, ProShares Ultra Gold ETF
66	, XLV	, HEALTH CARE SELC SPDR ETF
66	, UYG	, ULTRA FINANCIALS ETF
66	, OTP	, CLAYMORE OCEAN TOMO PATENT ETF
66	, NPM	, NUVEEN PREMIUM INCOME MUNICIPAL 2 CF
66	, FRI	, FIRST TRUST S&P REIT INDEX ETF
66	, NPG	, NUVEEN GA PREM
66	, NAZ	, NUVEEN ARIZONA
66	, NMT	, NUVEEN MA PREM
66	, JHI	, JOHN HANCOCK INVESTORS CF
66	, EWZ	, iSHARES BRAZIL ETF
65	, MWJ	, DXN DL MC BUL3X
65	, KSM	, DWS STRATEGIC MUNICIPAL INCOME CF
65	, BIK	, SPDR S&P BRIC 40 ETF
65	, CVY	, CLAYMORE/ZACKS YIELD HOG ETF
65	, IWS	, iSHARES RUS MIDVAL ETF
65	, IWD	, iSHARES RU 1000 VA ETF
65	, NFO	, CLAYMORE/SABRIENT INSIDER ETF
65	, NPI	, NUVEEN PREMIUM INCOME MUNICIPAL CF
65	, RWR	, DJ WILSHIRE REIT ETF
65	, XLE	, ENERGY SELECT SECTOR SPDR ETF
65	, DON	, WISDOMTREE MIDCAP DIVIDEND ETF
65	, BSE	, BLACKROCK NY INSURED MUNICPL INCM CF
64	, BTZ	, BLACKROCK PREFERRED & EQUITY ADV ETF
64	, EWH	, iSHARES HONG KNG ETF
64	, NY	, iSHARES NY 100 ETF
64	, MMU	, WESTERN ASST MNGD MUNCPLS CF
64	, FXL	, FIRST TRUST TECHNOLOGY ALPHADDEX ETF
64	, DGP	, PowerShares DB Gold Double Long ETN
64	, JKL	, iSHARES SML VALUE ETF
64	, ERX	, DXN DL EGBUL 3X
64	, DVM	, COHEN & STEERS DIVIDEND MAJORS CF
64	, FCT	, FIRST TRUSTFOUR CORNERS SENIOR II CF
64	, RFA	, BLACKROCK FLORIDA INVEST QUAL MUN CF
64	, DDF	, DELAWARE INVSTMNTS DIV AND INCM ETF
63	, IHI	, ISHARES DOW JNS US MEDI DVCE IDX ETF
63	, DEM	, WSDM TREE EMRG MKT HGH YLD EQTY ETF
63	, NNF	, NUVEEN NEW YORK PREMIUM INCM MUNI CF
63	, JKI	, ISHRS MID VALUE ETF
63	, PIQ	, PWRSHRS DYNMIC MAGNIQUANT ETF
63	, PPA	, POWERSHARES AEROSPACE & DEFENSE ETF
63	, VTV	, VANGUARD VALUE ETF
63	, IWW	, iSHARES RUSS3000V ETF
63	, VOE	, VANGUARD MID-CAP VALUE ETF
63	, ICF	, ISHARES TRUST COHEN FD ETF
63	, TYN	, TORTOISE NA ENERGY CF
63	, IXC	, iSHARES S&P GLOB ENG ETF
63	, IYG	, iSHARES DJ US FIN ETF
62	, NRK	, NUVEEN INSURED NY TAX FREE ADV CF
62	, VB	, VANGUARD SMALL-CAP ETF
62	, NPV	, NUVEEN VA PREM
62	, NMA	, NUVEEN MUNICIPAL ADVANTAGE CF
62	, XLP	, CONSUMER STAPLES SPDR ETF
62	, JCE	, NUVEEN CORE EQUITY ALPHA ETF

62	,	FEO	,	iSHARES MSCI SNG ETF
62	,	CEF	,	CENTRAL FUND CDA ETF
62	,	NNP	,	NUVEEN NY PERFORMANCE PLUS MUNI CF
62	,	VIG	,	VANGUARD DIVIDEND APPRECIATION ETF
62	,	NXI	,	NUVEEN OHIO DIVIDEND ADVAN MUNI CF
62	,	CIF	,	MFS INTERMEDIATE HIGH INCOME CF
61	,	NFM	,	NUVEEN MARYLAND DIV ADVAN MUNI CF
61	,	FT	,	FRANKLIN UNIV
61	,	PFM	,	POWERSHARES DIVIDEND ACHIEVERS ETF
61	,	VNQ	,	VANGUARD REIT ETF
61	,	GSP	,	Goldman Sachs Commodity Index (GSCI) Total Re
61	,	EVP	,	EATON VANCE PENNSYLVANIA MUNI INCM CF
61	,	PCN	,	PIMCO CORP INCOME CF
61	,	EVJ	,	EATON VANCE NEW JERSEY MUNI INCM CF
61	,	BHD	,	BLACKROCK STRATEGIC BOND CF
61	,	PUW	,	POWERSHARES WILDERHILL PROGRSS ETF
61	,	IAK	,	ISHARES DOW JONES US INSUR IDX ETF
61	,	EES	,	WISDOMTREE SMALLCAP EARNINGS ETF
60	,	GDV	,	GABELLI DIVIDEND & INCOME CF
60	,	NBW	,	NEUBERGER BERMAN CALIF INTERM MNC CF
60	,	EWV	,	iSHARES MEXICO ETF
60	,	NIM	,	NUVEEN SELECT MATURITY MUNICIPAL CF
60	,	XES	,	SPDR S&P OIL & GAS EQUIP & SERVS ETF
60	,	RZV	,	RYDEX S&P SMALLCP 600 PURE VALUE ETF
60	,	VDE	,	VANGUARD ENERGY ETF
60	,	PWC	,	PWRSHRS MKT POR ETF
60	,	PSJ	,	PWRSHRS SFTWRE ETF
60	,	BPP	,	BLACKROCK PREFERRED OPPORTUNITY CF
60	,	AIA	,	ISHARES S&P ASIA 50 INDEX ETF
60	,	JKJ	,	iSHARES SML CORE ETF
59	,	BPS	,	BLACKROCK PENNSYLVNA STRATGC MUNI CF
59	,	TDV	,	TDAX INDEPENDENCE 2040 ETF
59	,	MIW	,	EATON VANCE INSRD MICH MNCPL BOND CF
59	,	MHE	,	MASS HEALTH EDU
59	,	NMO	,	NUV MUN MKT OPP
59	,	DPU	,	PowerShares DB Commodity Long ETN
59	,	GML	,	SPDR S&P EMERGING LATIN AMERICA ETF
59	,	RHS	,	RYDEX S&P EQUAL WGT CONSMR STPLS ETF
59	,	DCA	,	DIVIDEND CAPITAL RLTY INCM ALLC ETF
59	,	NMZ	,	NUVEEN MUN HIGH
59	,	FFC	,	FLAHERTY & CRUMRINE CLAYMORE CF
59	,	AOA	,	ISHR SP AGR ALC
59	,	JQC	,	NUVEEN MULTI STRATEGY INC & GRT 2 CF
58	,	DEF	,	CLAYMORE SABRIENT DEFENDER ETF
58	,	EIM	,	EATON VANCE INSURED MUNICIPAL BND CF
58	,	GAF	,	SPDR S&P EMRG MIDDLE EAST AFRICA ETF
58	,	EWY	,	ISHARES MSCI SOUTH KOREA ETF
58	,	IPD	,	SPDR SP CON DIS
58	,	FDN	,	FIRST TRUST INTERNET INDEX CF ETF
58	,	FVD	,	FIRST TRUST VALUE DIVIDEND INDEX ETF
58	,	DVY	,	iSHARES DJ SEL DIV ETF
58	,	NZR	,	NUVEEN MARYLAND DIV ADVAN MUNI 2 CF
58	,	NRO	,	NEUBERGER BERMN REAL EST SEC INCM CF
58	,	FXG	,	FIRST TR CONSUMR STAPLS ALPHADDEX ETF

58	, PTY	, PIMCO CORPORATE OPPORTUNITY CF
57	, PJB	, PWRSHRS DYNMIC BANKING SEC ETF
57	, FAX	, ABERDEEN ASIA PACIFIC PRIME INCM CF
57	, PNI	, PIMCO NEW YORK MUNICI INCOME II CF
57	, NZX	, NUVEEN GEORGIA DIV ADVAN MUNI CF
57	, TLT	, ISHARES TRUST LEHMN 20 ETF
57	, PRFZ	, PWSHS TR FTSE RAFI US 1500 SMMD ETF
57	, FAD	, FIRST TR MULTI CP GRWTH ALPHADDEX ETF
57	, VMV	, VAN KAMPEN MASSACHUSETTS VALUE ETF
57	, BNA	, BLACKROCK NORTH AMERICN GOVT INCM CF
57	, EWM	, iSHARES MSCI MAL ETF
57	, GAB	, GABELLI EQUITY CF
57	, EWD	, iSHARES SWEDEN ETF
56	, NWI	, NUVEEN MARYLAND DIV ADVAN MUNI 3 CF
56	, RYE	, RYDEX S&P EQUAL WEIGHT ENERGY ETF
56	, PFI	, PWRSHRS DYNMIC FINANCIAL SECTOR ETF
56	, SGG	, iPath Dow Jones-AIG Sugar Total Return Sub-In
56	, PMF	, PIMCO MUNI INCM
56	, PSY	, BLACKROCK PRFD INCM STRT CF
56	, SIL	, Silver Miners Global X, SIL
56	, EHI	, WESTERN ASST GLBAL HIGH INCOME CF
56	, IYF	, iSHARES DJ US FNL ETF
56	, NII	, NUVEEN NORTH CARO DIV ADV MUNI 3 CF
56	, FTY	, ISHS FTSE NAREIT RL ESTAE 50 IDX ETF
56	, IAT	, ISHARES DJONES US REGNL BNKS IDX ETF
56	, RWW	, REVENUE SHR FNCL
55	, FVL	, FIRST TRUST VALUE LINE 100 ETF
55	, NOM	, NUVEEN MISSOURI PREMIUM INCM MUNI CF
55	, KYN	, KAYNE AND MLP IN ETF
55	, VDC	, VANGUARD CONSUMER STAPLES ETF
55	, GSG	, iShares GSCI Commodity-Indexed Trust ETF
55	, RNY	, COHEN STEERS REIT PREFER INCOME CF
55	, PYH	, POWERSHARES VALUE LINE IND ROTTN ETF
55	, IYR	, iSHARES DJ US REAL ETF
55	, NMB	, NUVEEN MASS DIVIDEND ADVAN MUNI CF
55	, IWM	, iSHARES RUSS 2000 ETF
55	, GTU	, CENTRAL GOLD UNT
55	, MSD	, MORGAN STANLEY EMERGING MKT DEBT ETF
54	, MZA	, BLACKROCK MUNIYIELD ARIZONA CF
54	, CCA	, MFS CALIFORNIA INSURED MUNICIPAL CF
54	, DBV	, POWERSHARES DB G10 CURR HARVEST ETF
54	, NBH	, NEUBERGER BERMAN INTERMED MNCPL CF
54	, NIO	, NUVEEN INS MUNI
54	, IAU	, iShares COMEX Gold Trust ETF
54	, IMT	, MORGAN STANLEY INSURED MUNICIPAL CF
54	, GLD	, streetTRACKS Gold Shares ETF
54	, TZI	, ISHR SP TR 2025
54	, RTM	, RYDEX S&P EQUAL WEIGHT MATRLS ETF
54	, TZO	, ISHR SP TR 2035
54	, GRI	, ALPS COHN STERS
53	, TZV	, ISHR SP TR 2040
53	, MHI	, PIONEER MUNICIPAL HIGH INCOME CF
53	, PXH	, PWRSHRS EMERGING MARKETS ETF
53	, SBW	, WESTERN ASST WRLDWISE INCM CF

53	, NVG	, NUVEEN INSURED DIV ADVAN MUNI CF
53	, NKG	, NUVEEN GEORGIA DIV ADVAN MUNI 2 CF
53	, NFJ	, NFJ DIV INTEREST & PREM STRATEGY CF
53	, EXI	, ISHARES S&P GBL INDTRLS SCTR IND ETF
53	, JJP	, IPTH DJAIG PR MT
53	, KIE	, KBW INSURANCE ETF
53	, EEM	, iSHARES MSCI EMR ETF
53	, ASG	, LIBERTY ALL STAR GROWTH FUND CF
53	, EMF	, TEMPLETON EMERGING MARKETS CF
52	, TLO	, SPDR LEHMAN LNG TRM TREASURY ETF
52	, FDL	, FIRST TRUST MORNINGSTAR DIV LDRS ETF
52	, ILF	, iSHARES S&P LAT ETF
52	, CHI	, CALAMOS CONV OPP
52	, IXJ	, iSHARES S&P GLOB HEALTH ETF
52	, RVT	, ROYCE VALUE CF
52	, NYC	, iSHARES IND COM ETF
52	, ETV	, EATON VANCE TAX MANAGED BUY WRITE CF
52	, TDF	, TEMPLETON DRAG
52	, MFM	, MFS MUNICIPAL INCOME CF
52	, TOK	, ISHARES MSCI KOKUSAI INDEX ETF
52	, EVM	, EATON VANCE INSURE CLIFORNIA MUNI CF
51	, TWN	, TAIWAN FUND ETF
51	, ETG	, EATON VANCE TAX ADVANTAGED GLOBAL CF
51	, KXI	, ISHARES S&P GBL CONSU STPLS SCTR ETF
51	, GHI	, GLOBAL HIGH INCOME FUND ETF
51	, NIF	, S&P NIFTY
51	, JKF	, iSHARES LRG VAL ETF
51	, NKO	, NUVEEN INSURED NY DIV ADV MUNI CF
51	, LBF	, DWS GLOBAL HIGH INCOME CF
51	, RNE	, MORGAN STANLEY EASTERN EUROPE ETF
51	, SLV	, iShares Silver Trust ETF
51	, XLF	, Financial SPDR, XLF
51	, NMY	, NUVEEN MD PREM
50	, PMM	, PUTNAM MANAGED MUNICIPAL INCOME ETF
50	, FLM	, FT ISE GBL EN CO
50	, VBR	, VANGUARD SMALL-CAP VALUE ETF
50	, EAD	, EVERGREEN INCOME ADVANTAGE CF
50	, SDY	, SPDR S&P DIVIDEND ETF
50	, VFH	, VANGUARD FINANCIALS ETF
50	, DBP	, PowerShares DB Precious Metals Fund
50	, BZM	, BLACKROCK MARYLAND MUNICIPAL BOND CF
50	, VAW	, VANGUARD MATERIALS ETF
50	, PSL	, PWRSHRS DYNMIC CNSUMR STAPLS SEC ETF
50	, PHO	, POWERSHARES WATER RESC PORTFOLIO ETF
50	, PGP	, PIMCO GLOBAL STOCKSPUS INCOME CF
50	, TZG	, ISHR SP TR 2020
49	, RCS	, PIMCO STRAT GLOBAL GOVERNMENT ETF
49	, ACWI	, ISHARES MSCI ACWI INDEX ETF
49	, BFO	, BLACKROCK FLORIDA MUNICIPAL 2020 CF
49	, KMM	, DWS MULTI MARKET INCOME CF
49	, DGL	, PowerShares DB Gold Fund
49	, MOO	, MARKET VECTORS AGRIBUSINESS ETF
49	, SBI	, WESTERN ASSET INTERMEDIATE MUNI CF
49	, NTC	, NUVEEN CONNECTICUT PREM INCM MUNI CF

49	,	PWO	,	PWRSHRS OTC ETF
49	,	DBC	,	PowerShares DB Commodity Index Tracking Fund
49	,	JFP	,	NUVEEN TAX-ADVANTAGED FLOATING CF
49	,	FCHI	,	ISH FTSE CHINA
48	,	RWO	,	SPDR DOW GBL RES
48	,	DBS	,	PowerShares DB Silver Fund
48	,	IPW	,	SPDR SP INT ENG
48	,	NGX	,	MA TX FREE ADVTG
48	,	DUC	,	DUFF & PHELPS
48	,	NQI	,	NUVEEN INSURED QUALITY MUNICIPAL CF
48	,	REZ	,	ISHS FTSE NAREIT RESIDENTL IDX ETF
48	,	BKF	,	ISHARES MSCI BRIC INDEX ETF
48	,	TZL	,	ISHR SP TR 2030
48	,	FFA	,	FIRST TRUST ENHANCED EQUITY INCM ETF
48	,	RIT	,	LMP REAL ESTATE INCM CF
48	,	NNO	,	NUVEEN NORTH CARO DIV ADV MUNI 2 CF
47	,	PHT	,	PIONEER HIGH INCOME CF
47	,	SOR	,	SOURCE CAPITAL CF
47	,	DGS	,	WSDMTREE EMRG MKTS SMALLCAP DVD ETF
47	,	MXA	,	MINNESOTA MUNICIPAL INC PORTFOLIO ET
47	,	MMV	,	EATON VANCE MASSACHUSETTS MNCPL CF
47	,	GXC	,	SPDR S&P CHINA ETF
47	,	NXQ	,	NUV SL TX FREE 2
47	,	MXE	,	MEXICO EQUITY AND INCOME CF
47	,	NGO	,	NUVEEN CONNECTICUT DIV ADV MUNI 3 CF
47	,	FFR	,	FIRT FTSE EPRA GLB REAL EST INDX ETF
47	,	NEA	,	NUVEEN INSURED TX FREE ADVAN MUNI CF
47	,	VNM	,	Vietnam Market Vectors, VNM
47	,	EDD	,	MS EMERGING MARKTS DOMESTIC DEBT ETF
46	,	LDF	,	LATIN AMERICAN DISCOVERY CF
46	,	CHY	,	CALAMOS CONVERTIBLE AND HIGH INCM CF
46	,	BKT	,	BLACKROCK INCOME CF
46	,	USV	,	E-TRACS CMCI Silver ETN
46	,	DES	,	WISDOMTREE SMALLCAP DIVIDEND ETF
46	,	MLN	,	MARKT VCTRS LB AMT FREE LG MNCPL IDX
46	,	VVO	,	VANGUARD EMERGING MARKETS ETF
46	,	PEY	,	PWRSHRS HGH YLD ETF
46	,	FLC	,	FLAHERTY&CRUMRINE CLAYMORE TOTEL CF
46	,	PRN	,	PWRSHRS DYNMIC INDUSTRIALS SEC ETF
46	,	FCO	,	ABERDEEN GLOBAL INCOME CF
46	,	MIN	,	MFS INTERMEDIATE INCOME CF
45	,	IPS	,	SPDR SP CON STP
45	,	BQY	,	BLACKROCK S&P QLTY RANKGS GLBL EQ CF
45	,	ERH	,	EVERGREEN UTILITIES AND HIGH INCM CF
45	,	UVT	,	PROSHS ULTRA RUSSELL2000 VALUE ETF
45	,	NXR	,	NUV SL TX FREE 3
45	,	NNY	,	NUVEEN NEW YORK MUNICIPAL VALUE CF
45	,	TTO	,	TORTOISE CAPITAL RESOURCES ETF
45	,	FTC	,	FIRST TR LRG CP GRW OPP ALPHADDEX ETF
45	,	IEZ	,	ISHARES DJONES US OIL EQP & SER ETF
45	,	GDF	,	WESTERN ASST GLBL PARTNRS INCOME CF
45	,	ECH	,	ISHARES MSCI CHILE INDEX ETF
45	,	EMJ	,	EATON VANCE INSURE NEWJERSEY MUNI CF
44	,	WEA	,	WESTERN ASSET PREMIER BOND CF

44	,	AOR	,	ISHR SP GRW ALC
44	,	CGW	,	CLAYMORE S&P GLOBAL WATER INDEX ETF
44	,	EWU	,	iSHARES UK ETF
44	,	NUV	,	NUVEEN MUNICIPAL VALUE CF
44	,	DXJ	,	WISDOMTREE JAPAN TOTAL DIVIDEND ETF
44	,	NIE	,	NICHOLAS APPLE EQTY & CONV INC ETF
44	,	NUO	,	NUVEEN OHIO QUALITY INCM MUNI CF
44	,	XLB	,	MATERIALS SELEC SPDR ETF
44	,	IWC	,	iSHARES RUS MICRO CAP ETF
44	,	UBG	,	E-TRACS BB GOLD
44	,	RSX	,	MARKET VECTORS RUSSIA ETF
44	,	FDI	,	FORT DEARBORN INCOME SECURITIES CF
43	,	GMM	,	SPDR S&P EMERGING MARKETS ETF
43	,	BPK	,	BLACKROCK MUNICIPAL 2018 TERM CF
43	,	BLV	,	VANGUARD LONG TERM BOND ETF
43	,	HIX	,	WESTERN ASST HIGH INCM II CF
43	,	CXA	,	SPDR LEHMAN CA
43	,	MMT	,	MFS MULTIMARKET INCOME CF
43	,	PAF	,	PWSHS FTSE RAFI ASIA PCFC EX JPN ETF
43	,	NCV	,	NICHOLAS APPLGATE CONVER & INCM CF
43	,	NXN	,	NUVEEN NY SEL
43	,	GUR	,	SPDR S&P EMERGING EUROPE ETF
43	,	NXP	,	NUVEEN SELECT TAX-FREE INCOME CF
43	,	MSF	,	MORGAN STANLEY EMERGING MARKETS ETF
42	,	BCV	,	BANCROFT CF
42	,	VT	,	Vanguard Total World Stock Index ETF
42	,	ADRE	,	BLDRS EMERMKT50 ETF
42	,	JRO	,	NUVEEN FLOATG RATE INCM OPPORTNTY CF
42	,	BKK	,	BLACKROCK MUNICIPAL 2020 TERM CF
42	,	ZF	,	ZWEIG FUND INC
42	,	DNL	,	WISDOMTREE JAPAN HGHYIELDNG EQTY ETF
42	,	EVT	,	EATON VANCE TAX ADVANTAGE DIVIDND CF
42	,	IGR	,	ING CLARION GLOBAL REAL ESTATE ETF
42	,	FAM	,	FIRST TRUSTABERDEN GLOBL OPP INCM CF
42	,	TZE	,	ISHR SP TR 2015
42	,	PFN	,	PIMCO FLOATING RATE STRATEGY CF
41	,	IWN	,	iSHARES RUSS2000V ETF
41	,	IGE	,	ISHARES S&P GSSI NATURAL RES IDX ETF
41	,	PGF	,	POWERSHARES FINANCIAL PREFERRED ETF
41	,	EWG	,	iSHARES MSCI GER ETF
41	,	EWS	,	iSHARES MSCI SNG ETF
41	,	DPD	,	DOW 30 PREMIUM & DIVIDEND INCOME CF
41	,	IOO	,	iSHARES S&P GL100 ETF
41	,	LGI	,	LAZARD GLOBAL TOTAL RETURN INCOME CF
41	,	TDN	,	TDAX INDEPENDENCE 2030 ETF
41	,	APB	,	ASIA PACIFIC CF
41	,	AAXJ	,	ISHR MSCI ASA JP
41	,	MCR	,	MFS CHARTER INCM
41	,	VFL	,	DELAWARE INV NAT MUNICIPL INCOME ETF
40	,	DRW	,	WISDMTREE INTNL REAL ESTATE SCTR ETF
40	,	HIO	,	WESTRN ASST HIGH INCM OPPORTUNITY CF
40	,	HYF	,	MANAGED HIGH YIELD PLUS CF
40	,	CMF	,	ISHARES S&P CALIFORNIA MUNICIPAL ETF
40	,	TLH	,	ISHARES LEHMAN 10-20 YR TREASURY ETF

40	, YCS	, PS ULTRASHRT YEN
40	, FRA	, BLACKROCK FLOAT RATE INC CF
40	, ARK	, BLACKROCK SENIOR HIGH INCOME CF
40	, GCH	, GREATER CHINA FD
40	, BGR	, BLACKROCK GLOBAL ENRGY & RESOURCS CF
40	, PIC	, POWERSHARES DYNAMIC INSRNC PRTFL ETF
40	, IFGL	, ISHS FTSE EPRA NREIT GLBL US IDX ETF
39	, BIF	, BOULDER GROWTH & INCOME ETF
39	, EVX	, MARKET VECTORS ENVIRONMENTL INDX ETF
39	, JHS	, JOHN HANCOCK INC
39	, EMB	, iShares JPMorgan USD Emerg Markets Bond
39	, IAE	, ING ASIA PAC HIGH DIVID EQY INCM ETF
39	, PBJ	, PWRSHRS FODBEV ETF
39	, LWC	, SPDR BCLY CAP LT
39	, RWV	, REVSH NA OV A100
39	, NPN	, NUVEEN PN MUN VL
39	, CMK	, MFS INTERMARKET INCOME I CF
39	, PLW	, POWERSHARES 1 30 LADDERED TRSURY ETF
39	, FXA	, RYDEX CURR SHS AUSTR DOLLAR TRST ETF
38	, FRB	, BLACKROCK FLOAT RATE INCM II CF
38	, PWZ	, PS INS CAL MUNIC
38	, SGF	, SINGAPORE FUND ETF
38	, PTO	, PS AT GR NFA GBL
38	, FOF	, COHEN & STEERS CLSD END OPPTY FD ETF
38	, MCI	, MASSMUTUAL CORPORATE INVESTOR ETF
38	, ECF	, ELLSWORTH ETF
38	, INY	, SPDR LEHMAN NY
38	, LQD	, ISHARES IBOXX INVESTMENT GRADE ETF
38	, PZA	, POWERSHARES INSR NATL MNCPL BOND ETF
38	, AFK	, MKT VCTRS AFRICA
38	, EVF	, EATON VANCE SENIOR INCOME CF
38	, WOOD	, ISHSP GBL TMBFOR
37	, NYV	, NUVEEN NY MUN 2
37	, PCM	, PCM FUND CF
37	, PCY	, POWERSHARES EMRG MKTS SOVRGN DBT ETF
37	, ADRA	, BLDRS ASIA50ADR ETF
37	, USA	, LIBERTY ALL-STAR EQUITY CF
37	, DSU	, BLACKROCK DEBT STRATEGIES CF
37	, DLS	, WISDOMTREE INTL SMALLCP DIVIDEND ETF
37	, ITM	, MKT VECT LHN BRS AMT FREE INTMDT ETF
37	, IRY	, SPDR SP INT HEL
37	, VLT	, VAN KAMPEN HIGH INCOME II ETF
37	, FGD	, FST TST DOW JNS GLBL SEL DVD IDX ETF
37	, HYD	, MKT VC HYLD MUN
36	, FXI	, iSHARES FTSE CHNA ETF
36	, PXJ	, POWERSHARES DYNM OIL SRVCS PRTFL ETF
36	, KHI	, DWS HIGH INCOME CF
36	, NFC	, NUVEEN CONNECTICUT DIV ADVAN MUNI CF
36	, IDU	, iSHARES DJ US UTIL ETF
36	, EVV	, EATON VANCE LIMITED DURATION INCM CF
36	, BJZ	, BLACKROCK CALIFORNIA MUNICPL 2018 CF
36	, RJI	, ELEMENTS Rogers International Commodity Index
36	, ICB	, MORGAN STANLEY INCOME SECURITIES CF
36	, FXN	, FIRST TRUST ENERGY ALPHADDEX ETF

36	, BDV	, BLACKROCK DI TST
36	, PGM	, iPath Dow Jones-AIG Platinum Total Return Sub
35	, DFJ	, WISDOMTREE JAPAN SMALCP DIVIDEND ETF
35	, HAP	, MRKT VCT RVE AST
35	, ERC	, EVERGREEN MULTI SECTOR INCOME CF
35	, GFY	, WESTERN ASST VARIABL RTE STRT CF
35	, IPE	, SPDR BARCLAYS CAPITAL TIPS ETF
35	, EEB	, CLAYMORE/BNY BRIC ETF
35	, NGK	, NUVEEN CONNECTICUT DIV ADV MUNI 2 CF
35	, RMT	, ROYCE MICRO CAPITAL CF
35	, XLU	, UTILITIES SELECT SPDR ETF
35	, NCZ	, NICHOLAS APPLGATE CONV & INCM II CF
35	, PFF	, ISHS S&P U S PREFD STOCK INDX ETF
35	, DGT	, SPDR DJ GLOBAL TITANS ETF
34	, EFT	, EATON VANCE SENIOR FLOATING RATE CF
34	, SCZ	, ISHARES MSCI EAFE SMALL CAP IDX ETF
34	, IYT	, ISHARES DJ TRANSPN AVG INDX ETF
34	, VPU	, VANGUARD UTILITIES ETF
34	, ETB	, EATON VANCE TAX MANAGED BUY WRITE CF
34	, PAO	, PS AT BALGR NFA
34	, PZT	, PS INS NY MUNIC
34	, TIP	, ISHARES TRUST ETF
34	, PCA	, PS AT BAL NFAGBL
34	, BHV	, BLACKROCK VIRGINIA MUNICIPAL BOND CF
34	, AOM	, ISHR SP MOD ALC
34	, KBE	, KBW BANK ETF
34	, FDM	, FIRST TRUST DJ SEL MICROCAP INDX ETF
33	, IEF	, ISHARES LEHMN 7-10 YR TRSRY BND ETF
33	, HGI	, CLAYMRE ZACKS INTL YLD HOG INDEX ETF
33	, PCF	, PUTNAM HIGH INCOME SECURITIES ETF
33	, WPS	, ISHS S&P WRLD EX US PROPERTY IDX ETF
33	, JPG	, NUVEEN EQUITY PREMIUM GROWTH CF
33	, IPK	, SPDR SP INT TEC
33	, TFI	, SPDR LEHMAN MUNICIPAL BOND ETF
33	, BLW	, BLKRK LT DR INC
33	, ETO	, EATON VANCE TAX ADVANTAGED OPP CF
33	, IXG	, iSHARES S&P GLOB FIN ETF
33	, EFG	, iSHARES MSCI EAFE GRWTH ETF
33	, PID	, POWERSHARES INTL DVDND ACHVRS ETF
32	, PXR	, PS EMERGING INFRA
32	, CGO	, CALAMOS GLOBAL TOTAL RETURN CF
32	, FRN	, CMR BNY MLN FNTR
32	, LOR	, LAZARD WORLD DIVIDEND & INCOME CF
32	, IGF	, ISHARES S&P GLOBAL INFRSTCTR IDX ETF
32	, RYU	, RYDEX S&P EQUAL WEIGHT UTILITIES ETF
32	, MUB	, ISHARES S&P NATIONAL MNCPL BND ETF
32	, JEQ	, JAPAN EQUITY CF
32	, IPN	, SPDR SP INT IND
32	, EWT	, iSHARES MSCI TAI ETF
32	, TGR	, ISHR SP RT INC
32	, JFR	, NUVEEN FLOATING RATE INCOME CF
31	, DEW	, WISDOMTREE EUROPE HGH YLDNG EQTY ETF
31	, EPP	, iSHARES MSCI PAC ETF
31	, HSM	, HYPERION BROOKFIELD STRT INCM ETF

31	,	KCE	,	KBW CAPITAL MARKETS ETF
31	,	PDN	,	PWRSHRS DEV MKTS EX US SMALL MID ETF
31	,	DFE	,	WISDOMTREE EUROPE SMLCP DIVIDEND ETF
31	,	AOK	,	ISHR SP CON ALC
31	,	GWL	,	SPDR S&P WORLD EX US ETF
31	,	TLI	,	LMP CORPORATE LOAN CF
31	,	EWX	,	SPDR SP EMG SC
31	,	PEO	,	PETROLEUM & RESOURCES CF
31	,	PHB	,	PWRSHS HGH YIELD CORPORATE BOND ETF
31	,	ETW	,	EATON VANCE TAX MANAGED GLOBAL CF
30	,	PGX	,	POWERSHARES PREFERRED PORTFOLIO ETF
30	,	ACWX	,	ISHARES MSCI ACWI EX US INDEX ETF
30	,	LTL	,	PRSH ULTRA TELCM
30	,	GF	,	NEW GERMANY FUND
30	,	IFSM	,	ISHRS FTSE DEVELOPD SC EX NA IDX ETF
30	,	CUT	,	CLAYMORE/CLEAR GLOBAL TIMBER IDX ETF
30	,	MGF	,	MFS GOVERNMENT MARKETS INCOME CF
30	,	FTF	,	FRANKLINTEMPLETON LIMITED INCOME CF
30	,	FVI	,	FIRST TRUST VALUE LINE EQU INDEX ETF
30	,	GLU	,	GABELLI GLOBAL UTILITY & INCOME CF
30	,	PFL	,	PIMCO FLOATING RATE INCOME CF
30	,	FNI	,	FIRST TRUST ISE CHINDIA INDEX ETF
29	,	CFT	,	ISHARES LEHMAN CREDIT BOND ETF
29	,	GMF	,	SPDR S&P EMERGING ASIA PACIFIC ETF
29	,	UCI	,	E-TRACS BBERG
29	,	PSI	,	PS DYN SM CONDCTR
29	,	PHF	,	PACHOLDER HIGH YIELD ETF
29	,	NSL	,	NUVEEN SENIOR INCOME CF
29	,	CWI	,	SPDR MSCI ACWI EX US ETF
29	,	CWB	,	SPDR BAR CAP BND
29	,	CII	,	BLACKROCK ENHCD CAPITL AND INCOME CF
29	,	PUI	,	POWERSHARES DYNAMIC UTILTS PRTFL ETF
29	,	XSD	,	SPDR S&P SEMICONDUCTOR ETF
29	,	PZI	,	PWRSHRS ZACKS MIC ETF
28	,	HYG	,	ISHS IBXX \$ HGH YIELD CRPRTE BND ETF
28	,	MSP	,	MSCI PAN EURO INDEX
28	,	JSC	,	SPDR RUSSELL NOMURA SML CP JAPAN ETF
28	,	RWX	,	SPDR DJ WILSHIRE INTL REAL ESTAT ETF
28	,	GGT	,	GABELLI GLOBAL MULTIMEDIA CF
28	,	TAI	,	TRANSAMERICA INCOME SHARES CF
28	,	EWL	,	WEBS SWITZERLAND ETF
28	,	EVG	,	EATON VANCE SHORT DURATION INCOME CF
28	,	NYF	,	ISHARES S&P NEW YORK MUNICIPAL ETF
28	,	VVR	,	VAN KAMPEN SENIOR INCOME ETF
28	,	IYM	,	iSHARES DJ BASIC ETF
28	,	HTR	,	HYPERION BROOKFIELD TOTAL RETURN ETF
28	,	GWX	,	SPDR S&P INTERNATIONAL SMALL CAP ETF
27	,	WIP	,	SPDR DB INT GOVT
27	,	PHK	,	PIMCO HIGH INCOME CF
27	,	RJZ	,	ELEMENTS Rogers International Commodity Metal
27	,	RTR	,	REVENUE SHRS ADR
27	,	JJC	,	Dow Jones-AIG Copper Total Return ETN
27	,	GULF	,	WTR MID EAST DIV
27	,	OIH	,	ML OIL SERVICE HOLDERS

27	, JPZ	, NUVEEN EQUITY PREMIUM INCOME CF
27	, CET	, CENTRAL SECURITY
27	, IGN	, ISHARES S&P GSTI NETWORKING INDX ETF
27	, NTX	, NUVEEN TEXAS QUALITY INCM MUNI CF
27	, GCF	, GLOBAL ICM & CUR
26	, TEI	, TEMPLETON EMER
26	, JSN	, NUVEEN EQUITY PREMIUM OPPORTUNITY CF
26	, TDX	, TDAX INDEPENDENCE IN TARGET ETF
26	, VEU	, VANGUARD FTSE ALL WORLD EX US ETF
26	, IEV	, iSHARES S&P EUR350 ETF
26	, GBF	, ISHR BARC GOV CR
26	, EFA	, iSHARES EAFE ETF
26	, MCN	, MADISON/CLMR COV CALL & EQU STRT ETF
26	, DRR	, MV DBL SHRT EURO
26	, EFR	, EATON VANCE SENIOR FLOATING RATE CF
26	, DHF	, DREYFUS HIGH YIELD STRATEGIES CF
26	, ADRD	, BLDRS DEVMKT100 ETF
25	, JLA	, NUVEEN EQUITY PREMIUM ADVANTAGE CF
25	, ICI	, IPATH OPT CUR CA
25	, IAI	, ISHARES DOW JONES US BRKR-DEALRS ETF
25	, MHY	, WESTERN ASST MANGD HGH INCM CF
25	, ADRU	, BLDRS EUR100ADR ETF
25	, PAGG	, PS GBL AGRICULTURE
25	, VSS	, VANGRD FTSE WR SC
25	, EOD	, EVERGREEN GLBL DIVID OPPORTUNITY ETF
25	, JNK	, SPDR BARC HY BND
25	, UBM	, E-TRACS BB IN MT
25	, JPP	, SPDR RUSSELL NOMURA PRIME JAPAN ETF
25	, UBC	, E-TRACS BB LVSTK
25	, EUO	, PS ULTRASHRT EURO
24	, BIV	, VANGUARD INTERMEDIATE TERM BOND ETF
24	, WIW	, WESTRN CLYMR INFLTN OPPRT & INCM ETF
24	, COW	, Dow Jones-AIG Livestock Total Return ETN
24	, MTS	, MONTGOMERY STREET INCOME SECURIT CF
24	, FMY	, FIRST TRUST/FIDAC MORTGAGE INCOME CF
24	, BGT	, BLACKROCK GLBL FLOATING RATE INCM CF
24	, TNA	, DXN DL SC BUL3X
24	, EWJ	, iSHARES MSCI JPN ETF
24	, GCV	, GABELLI CONVERTBLE & INCM SECURTY CF
24	, BLH	, BLACKROCK NEW YORK MUNICIPAL 2018 CF
24	, MXF	, MEXICO ETF
24	, ITR	, SPDR BAR CITC BD
23	, IEI	, ISHARES LEHMAN 3-7 YEAR TREASURY ETF
23	, CIU	, ISHARES INTERMEDIATE CREDIT ETF
23	, IYZ	, iSHARES DJ US TEL ETF
23	, JJT	, IPATH DJAIG TIN
23	, DIM	, WISDOMTREE INTL MIDCAP DIVIDEND ETF
23	, QAI	, IQ HED ML ST TRK
23	, EWC	, iSHARES CANADA ETF
23	, IAF	, ABERDEEN AUSTRALIA EQUITY CF
23	, IPF	, SPDR SP INT FIN
23	, FEU	, EUROTOP 100
23	, IDX	, MKT VCTR INDONESIA
23	, MXI	, ISHARES S&P GBL MATERLS SCR IDX ETF

22	, PXF	, PWRSHS FTSE RAFI DVPD MKT EX US ETF
22	, ITF	, iSHARES S&P/TOPX ETF
22	, DWM	, WISDOMTREE DEFA ETF
22	, PIO	, POWERSHARES GLOBAL WATER ETF
22	, HAO	, CLAYMORE TR 2 CHINA SML CP INDX ETF
22	, DOL	, WISDOMTREE INTL LARGECP DIVIDEND ETF
22	, AGG	, ISHARES LEHMAN AGGREGATE BOND ETF
22	, IMF	, WESTERN ASST INFLATION MGMT CF
22	, JFC	, JF CHINA REGION CF
22	, FXC	, RYDEX CURR SHS CANADIAN DOLLAR ETF
22	, VPL	, VANGUARD PACIFIC ETF
22	, AGF	, PowerShares DB Agriculture Long ETN
22	, FXU	, FIRST TRUST UTILITIES ALPHADAX ETF
21	, BME	, BLACKROCK HEALTH SCIENCES CF
21	, EFV	, iSHARES MSCI EAFE VALUE ETF
21	, GVI	, ISHARES INTERMEDIATE GOVT/CREDIT ETF
21	, PRB	, MRKT VT PR RF MU
21	, VEA	, VANGUARD EUROPE PACIFIC ETF
21	, ZTR	, ZWEIG TOTAL RETURN CF
21	, FUD	, E-TRACS CMCI Food ETN
21	, PPR	, ING PRIME RATE ETF
21	, PSP	, POWERSHARES LISTED PRIVATE EQTY ETF
21	, BND	, VANGUARD TOTAL BOND MARKET ETF
21	, LAG	, SPDR LEHMAN AGGREGATE BOND ETF
21	, TRF	, TEMPLETON RUSSIA EAST EUROPEAN CF
20	, SMB	, MARKET VETRS LEHMAN BROS MUNIPAL ETF
20	, PHD	, PIONEER FL RT TR
20	, MFV	, MFS SPECIAL VAL
20	, EWA	, iSHARES AUSTRAL ETF
20	, VOX	, VANGUARD TELECOMMUNICATION SERVC ETF
20	, ENY	, CLYMR SWM CANADIAN ENGY INCM IDX ETF
20	, EEA	, EUROPEAN EQUITY CF
20	, CNY	, MORGAN STANLEY MRKT VCTORS RMB ETN
20	, TSI	, TCW STRATEGIC INCOME ETF
20	, LVL	, CLAYMORE BBD HIGH INCOME INDEX ETF
20	, DVF	, BLACKROCK DIVERSIFIED INCOME STRT CF
20	, FAS	, DXN DL FINBUL3X
19	, TDD	, TDAX INDEPENDENCE 2010 ETF
19	, GLV	, CLOUGH GLOBAL ALLOCATION CF
19	, PKN	, POWERSHARES GLOBAL NUCLEAR ENEGY ETF
19	, WIA	, WESTERN CLYMR INFLTN SEC & INCM ETF
19	, JGT	, NUVEN MULT CUR SHRT TERM GVT INC ETF
19	, SHM	, SPDR LEHMAN ST
19	, DBB	, PowerShares DB Base Metals Fund
19	, AGZ	, ISHR BRCLY AG BD
19	, ITE	, SPDR LHMN INTERMDTE TERM TREASRY ETF
19	, SUB	, ISHR ST NAT MUN
19	, IF	, INDONESIA CF
19	, SGL	, STRATEGIC GLOBAL INCOME ETF
19	, MPV	, MASSMUTUAL PARTICIPATION INVESTR ETF
18	, MDD	, SPDR ID INL MID
18	, GII	, SPDR FTSE MACQUARIE GLBL INF 100 ETF
18	, CEE	, CENTRAL EUROPE AND RUSSIA ETF
18	, UAG	, E-TRACS BB AGRIC

18	,	CSJ	,	ISHARES LEHMAN 1-3 YEAR CREDIT ETF
18	,	TUR	,	ISHARES MSCI TURKEY INVBLE MRKT ETF
18	,	JJG	,	Dow Jones-AIG Grains Total Return ETN
18	,	DBU	,	WISDMTREE INTL UTILITIES SEC ETF
18	,	EOS	,	EATON VANCE ENHANCED EQTY INCM II CF
18	,	AYT	,	BCLYS GEMS ASIA8
18	,	REM	,	ISHS FTSE NAREIT MRTGE REITS IDX ETF
18	,	GDL	,	GABELLI GLOBAL DEAL ETF
17	,	PFA	,	PWRSHS DYNMIC DVPD INTL OPPTS ETF
17	,	TKF	,	TURKISH INVESTMENT ETF
17	,	EWN	,	iSHARES NETHLND ETF
17	,	MBB	,	ISHARES LEHMAN MBS FIXED RT BND ETF
17	,	BWX	,	SPDR LEHMAN INTRNATIONL TREASURY ETF
17	,	DOO	,	WISDOMTREE INTL DIVIDEND TOP 100 ETF
17	,	FXM	,	RYDEX CUR SHS MEXICAN PESO ETF
17	,	VGK	,	VANGUARD EUROPEAN ETF
17	,	UYM	,	ULTRA BASIC MATERIALS ETF
17	,	INR	,	MORGAN STANLEY MRKT VCTORS INR ETN
17	,	BRF	,	BLACKROCK FLORIDA INSURD MUNI2008 CF
17	,	GIM	,	TEMPLETON GLOBAL INCOME CF
16	,	UUP	,	POWERSHRS DB US DLR INDX BULLISH ETF
16	,	MBG	,	SPDR BCLY CP MRT
16	,	EOI	,	EATON VANCE ENHANCED EQTY INCOME CF
16	,	DWX	,	SPDR SP INTERNATIONAL ETF
16	,	BSV	,	VANGUARD SHORT TERM BOND ETF
16	,	DTH	,	WISDOMTREE DEFA HGHYIELDNG EQTY ETF
16	,	GCC	,	GreenHaven Continuous Commodity Index Fund
16	,	SHY	,	ISHARES LEHMAN 1-3 YR TRSRY BND ETF
16	,	HIF	,	WESTERN ASST HIGH INCOME CF
16	,	JOF	,	JAPAN SMALLER CAPITALIZATION CF
16	,	PVI	,	POWERSHARES VRDO TAX FREE WEEKLY ETF
16	,	SHV	,	ISHARES LEHMAN SHORT TREASURY ETF
16	,	PLK	,	POWERSHARES ACTIVE LOW DURATION ETF
15	,	BIL	,	SPDR LEHMAN 1-3 MONTH T BILL ETF
15	,	JGV	,	NUVEEN GLOBAL VALUE ETF
15	,	IRV	,	SPDR SP INT MAT
15	,	CYB	,	WT DRYFS CHN YN
15	,	EPI	,	WISDOMTREE INDIA EARNINGS ETF
15	,	FXB	,	RYDEX CUR SHS BRIT POUND STER ETF
15	,	EWQ	,	iSHARES FRANCE ETF
15	,	JGG	,	NUVEEN GLOBAL GOVT ENHNCD INCM ETF
15	,	FXS	,	RYDEX CURR SHS SWEDISH KRONA ETF
15	,	BCF	,	BLACKROCK REAL ASSET EQUITY ETF
15	,	IGA	,	ING GLOBAL ADVANTAGE PREMIUM OPP CF
15	,	JJM	,	Dow Jones-AIG Industrial Metals Total Return
14	,	EZU	,	iSHARES MSCI EMU ETF
14	,	BDJ	,	BLACKROCK ENHANCED DIV ACHIEVERS CF
14	,	TDH	,	TDAX INDEPENDENCE 2020 ETF
14	,	JEM	,	BARCLAYS BANK GEMS INDEX ETN
14	,	APF	,	MORGAN STANLEY ASIA PACIFIC CF
14	,	INP	,	BARCLAYS IPATH MSCI INDIA RTRN INDX
14	,	JJU	,	iPath Dow Jones-AIG Aluminum Total Return Sub
14	,	PGJ	,	PWRSHRS GLD DRAG ETF
14	,	PMNA	,	PWSHR MENA FRT

14	, IXP	, iSHARES S&P GLOB TEL ETF
14	, JJA	, Dow Jones-AIG Agriculture Total Return ETN
14	, FCG	, FIRST TR ISE REVERE NTRL GAS IDX ETF
13	, FXF	, RYDEX CUR SHS SWISS FRANC ETF
13	, JXI	, ISHARES S&P GBL UTILITS SCTR IDX ETF
13	, FEZ	, DJ EURO STOXX 50 ETF
13	, MES	, MRKT VCTR GULF ST
13	, EWK	, iSHARES BELGIUM ETF
13	, PZD	, POWERSHARES CLEANTECH ETF
13	, UDN	, POWERSHRS DB US DLR INDX BEARISH ETF
13	, PIN	, POWERSHARES INDIA PORTFOLIO ETF
13	, GRU	, ELEMENTS MLCX Grains Index ETN
13	, EXG	, EATON VCE TAX MGD GLBL DIVFD EQY ETF
13	, EGF	, BLACKROCK ENHANCED GOVERNMENT CF
13	, FDD	, FIRST DJ STOXX SLECT DIV 30 INDX ETF
13	, ADZ	, DB AGRI SHORT
12	, DJP	, Dow Jones-AIG Commodity Index Total Return ET
12	, ERO	, BARCLAYS IPATH EUR USD EXCH RATE ETN
12	, NUCL	, ISHR SP GBL NCL ENG
12	, CH	, CHILE CF
12	, ETY	, EATON VANCE TAXMNGD DVFD EQ INCM ETF
12	, PSAU	, PS GBL GOLD AND PRECS
12	, PIM	, PUTNAM MSTR INTR
12	, BWZ	, SPDR BCLY CAP ST
12	, ASA	, ASA ETF
12	, CEW	, WT DRYFS EMG CUR
12	, KF	, KOREA CF
12	, EDC	, DXN DL EM BUL3X
11	, GDV	, MARKET VECTORS GOLD MINERS ETF
11	, RJA	, ELEMENTS Rogers International Commodity Agric
11	, FXE	, CURRENCYSHARES EURO ETF
11	, DBA	, PowerShares DB Agriculture Fund
11	, SLX	, MARKET VECTORS STEEL INDEX ETF
11	, SEA	, CLYMR DEL GL SPG
11	, IFEU	, ISHRS FTSE EPRA NAREIT EURP IDX ETF
11	, XGC	, CLYMR GRET COS LARGCAP GRWTH IDX ETF
11	, ISHG	, ISH TI SP C 1-3
11	, BSP	, AMERICAN STRATEGIC INCOME ETF
11	, FXY	, CURRENCYSHARES JAPANESE YEN TR ETF
11	, LD	, iPath Dow Jones-AIG Lead Total Return Sub-Ind
10	, JYN	, BARCLAYS IPATH JPY USD EXCH RATE ETN
10	, BOE	, BLACKROCK GLOBAL OPPORTUNITIES EQ CF
10	, SZR	, WTR DYFS SA RAND
10	, CSP	, AMERICAN STRATGC INCOME III ETF
10	, IST	, SPDR SP INT TEL
10	, GRR	, ASIA TIGERS CF
10	, IPU	, SPDR SP INT UTL
10	, BDD	, PowerShares DB Base Metals Double Long ETN
10	, IGOV	, ISH TI SP C IT
10	, PSTL	, PS GLOBAL STEEL
10	, CAF	, MS CHINA A SHARES ETF
10	, DAG	, PowerShares DB Agriculture Double Long ETN
9	, PPT	, PUTNAM PREM INCM
9	, EWI	, WEBS ITALY ETF

9	,	EU	,	WT DREYFUS EURO
9	,	EWO	,	iSHARES AUSTRIA ETF
9	,	JYF	,	WSDMTR DRS JPYEN
9	,	IGD	,	ING GLOBAL EQUITY DIVDEND OPP CF
9	,	CMD	,	ProShares UltraShort DJ-AIG Commodity ETF
9	,	FAA	,	CLYMR NYARC AIRL
9	,	NAI	,	NICHOLAS-APPLEGATE INTL & PREMIUM CF
9	,	HCF	,	HIGHLAND CREDIT CF
9	,	SWZ	,	SWISS HELVETIA CF
9	,	JJS	,	iPath Dow Jones-AIG Softs Total Return Sub-In
9	,	UCD	,	ProShares Ultra DJ-AIG Commodity ETF
8	,	BOS	,	PowerShares DB Base Metals Short ETN
8	,	ULE	,	PS ULTRA EURO
8	,	JJN	,	Dow Jones-AIG Nickel Total Return ETN
8	,	PKOL	,	PS GLOBAL COAL
8	,	YCL	,	PS ULTRA YEN
8	,	DDP	,	DB COMMODITY SHRT
8	,	IIF	,	MORGAN STANLEY INDIA INVESTMENT CF
8	,	BDG	,	PowerShares DB Base Metals Long ETN
8	,	EFZ	,	PROSHARES SHORT MSCI EAFE ETF
8	,	AGQ	,	ProShares Ultra Silver ETF
8	,	XME	,	SPDR S&P METALS & MINING ETF
8	,	IFN	,	INDIA CF
7	,	VXZ	,	BCL IPTSP500 MT
7	,	EQS	,	EQUUS TOTAL RETURN ETF
7	,	CHN	,	CHINA ETF
7	,	ICN	,	WT DR INDIAN RUP
7	,	AGA	,	PowerShares DB Agriculture Double Short ETN
7	,	KOL	,	MARKET VECTORS COAL ETF
7	,	FAN	,	FT GBL WND ENERGY
7	,	NLR	,	MARKET VECTORS NUCLEAR ENERGY ETF
7	,	EWP	,	iSHARES SPAIN ETF
7	,	DGZ	,	PowerShares DB Gold Short ETN
7	,	LSC	,	ELEMENTS S&P Commodity Trends Indicator ETN
7	,	CCX	,	WisdomTree Dreyfus Commodity Currency
6	,	DOG	,	SHORT DOW30 PROSHARES ETF
6	,	PWND	,	PS GBL WIND ENERGY
6	,	EIS	,	ISHARES MSCI ISRAEL CAPED INVBLE ETF
6	,	KEF	,	KOREA EQUITY CF
6	,	PST	,	PS UL SRT 7 10 YR
6	,	SH	,	SHORT S&P500 PROSHARES ETF
6	,	PXN	,	POWERSHARES LUX NANOTECH PRTFLIO ETF
6	,	EUM	,	SHORT MSCI EMERGING MARKETS ETF
6	,	SEF	,	PROSHRS FINANCIAL
6	,	DZK	,	DXN DL DM BL 3X
6	,	RWM	,	PROSHARES TR SHRT RUSSELL2000 ETF
6	,	SZO	,	PowerShares DB Crude Oil Short ETN
6	,	QCLN	,	FT NASDAQ CLEAN EDGE US LQD INDX ETF
5	,	MYY	,	SHORT MIDCAP400 PROSHARES ETF
5	,	DDG	,	PROSHARES OIL GAS
5	,	CLM	,	CORNERSTONE STRATEGIC VALUE CF
5	,	NIB	,	iPath Dow Jones-AIG Cocoa Total Return Sub-In
5	,	PBD	,	POWERSHARES GLOBAL CLEAN ENERGY ETF
5	,	SBB	,	PROSHARES TR SHORT SMALLCAP600 ETF

5	, CRF	, CORNERSTONE TOTAL RETURN CF
5	, DEE	, DB CMDTY DBL SRT
5	, BOM	, PowerShares DB Base Metals Double Short ETN
5	, BZF	, WT DRYFS BRAZ RL
5	, EWV	, ULTRASHORT MSCI JAPAN ETF
5	, BAL	, iPath Dow Jones-AIG Cotton Total Return Sub-I
4	, JO	, iPath Dow Jones-AIG Coffee Total Return Sub-I
4	, GAZ	, Dow Jones-AIG Natural Gas Total Return ETN
4	, PSQ	, SHORT QQQ PROSHARES ETF
4	, SDP	, ULTRASHORT UTILITIES PROSHARES ETF
4	, TLL	, PRSH ULTRASHT TL
4	, TYO	, DXN 10YR TRBR3X
4	, GEX	, MARKET VECTORS GLBL ALTNTV ENRGY ETF
4	, PBW	, PWRSHRS WILDHLL ETF
4	, ICLN	, ISH SP GBLCL ENG
4	, EFU	, PROSHARES ULTRASHORT MSCI EAFE ETF
4	, RXD	, ULTRASHORT HEALTH CARE PROSHARES ETF
4	, SZK	, ULTRASHORT CONSUMER GOODS ETF
3	, GLL	, MORGAN STANLEY ILB
3	, DXD	, ULTRASHORT DOW30 PROSHARES ETF
3	, SJF	, PROSHS ULTRASHORT RUSS1000 VALU ETF
3	, SDS	, ULTRASHORT S&P500 PROSHARES ETF
3	, TBT	, PRS ULT SRT20PLUS YR
3	, RSW	, RYDEX INVERSE 2X S&P 500 ETF
3	, DZZ	, PowerShares DB Gold Double Short ETN
3	, SMN	, ULTRASHORT BASIC MATERIALS ETF
3	, SFK	, PROSHS ULTRASHORT RUSS1000 GROW ETF
3	, SJH	, PROSHS ULTRASHORT RUSS2000 VAL ETF
3	, FXP	, ULTRASHORT FTSE XINHUA CHINA 25 ETF
3	, DTO	, PowerShares DB Crude Oil Double Short ETN
3	, SKF	, ULTRASHORT FINANCIALS PROSHARES ETF
2	, SCC	, ULTRASHORT CONSUMER SERVICES ETF
2	, MZZ	, ULTRASHORT MIDCAP400 PROSHARES ETF
2	, SCO	, ProShares UltraShort DJ-AIG Crude Oil ETF
2	, SIJ	, ULTRASHORT INDUSTRIALS PROSHARES ETF
2	, EEV	, ULTRASHORT MSCI EMERGING MARKETS ETF
2	, GRN	, IPATH GLBL CARBN
2	, DUG	, ULTRASHORT OIL & GAS PROSHARES ETF
2	, TWM	, PROSHARES TR ULTRASHRT RUSEL2000 ETF
2	, SDK	, PROSHS ULTSHOT RUSS MIDCAP GROW ETF
2	, SSG	, PRSH US SEMI COND
2	, SDD	, PROSHARES TR ULTRASHRT SMLCP600 ETF
2	, REW	, ULTRASHORT TECHNOLOGY PROSHARES ETF
1	, QID	, ULTRASHORT QQQ PROSHARES ETF
1	, SKK	, PROSHS ULTRASHORT RUSS2000 GROWTH ET
1	, SRS	, PSHR US RL EST
1	, DPK	, DXN DL DM BR 3X
1	, CAK	, ML ACC NT CN STP
1	, VXX	, BCL IPTSP500 ST
1	, KWT	, MKVCTR SOLAR ENERGY
1	, TAN	, CLAYMORE MAC GLOBAL SOLAR ENERGY ETF
1	, TMV	, DXN 30YR TRBR3X
1	, BGZ	, DXN DL LC BR 3X
1	, MWN	, DXN DL MC BR 3X

1	,	UNG	,	United States Natural Gas Fund
0	,	ERY	,	DXN DL EGBR 3X
0	,	EDZ	,	DXN DLYEMK BR3X
0	,	TYP	,	DXN DLY TC BR3X
0	,	TZA	,	DXN DL SC BR3X
0	,	FAZ	,	DXN DL FN BR 3X
0	,	ZSL	,	PS ULTRASHRT SILVER

**Simulated weekly performance of top 10 ETFs:**

As shown below, my Top10 ETFs, ranked each week by their relative strength, gained substantially more than the S&P 500 since August, 2004, in weekly simulated trading. The numbers in the table are also graphed; see below the table. Both start at 100 on 8/20/04. Changes to my Top10 ETFs list are made at the end of each week. This computer simulation excludes fees, transactions costs, dividends, and taxes. According to CFTC Rule 4.41, hypothetical or simulated performance results have certain limitations. Unlike an actual performance record, simulated results do not represent actual trading. Also, since the trades have not been executed, the results may have under- or over-compensated for the impact, if any, of certain market factors, such as lack of liquidity. No representation is being made that any account will or is likely to achieve profit or losses similar to those shown. This is a research study, and it is not investment advice.

<u>Date</u>		<u>S&amp;P 500</u>		<u>Top 10</u>		<u>Top 10 Advantage</u>
8/20/04	,	100.00	,	100.00	,	0.00
8/27/04	,	100.86	,	101.91	,	1.05
9/3/04	,	101.39	,	101.90	,	0.50
9/10/04	,	102.33	,	103.88	,	1.56
9/17/04	,	102.75	,	104.31	,	1.56
9/24/04	,	101.07	,	106.78	,	5.71
10/1/04	,	103.02	,	106.69	,	3.68
10/8/04	,	102.17	,	110.18	,	8.01
10/15/04	,	100.90	,	111.75	,	10.85
10/22/04	,	99.76	,	109.37	,	9.60
10/29/04	,	102.90	,	110.15	,	7.25
11/5/04	,	106.17	,	111.23	,	5.06
11/12/04	,	107.81	,	114.52	,	6.70
11/19/04	,	106.55	,	117.46	,	10.91
11/26/04	,	107.68	,	116.81	,	9.14
12/3/04	,	108.45	,	120.65	,	12.20
12/10/04	,	108.16	,	122.30	,	14.14
12/17/04	,	108.73	,	118.70	,	9.98
12/24/04	,	110.18	,	120.94	,	10.76
12/31/04	,	110.34	,	122.56	,	12.22
1/7/05	,	108.00	,	124.27	,	16.28
1/14/05	,	107.85	,	117.64	,	9.80
1/22/05	,	106.33	,	118.28	,	11.95
1/28/05	,	106.65	,	115.88	,	9.23
2/4/05	,	109.53	,	118.24	,	8.71
2/11/05	,	109.74	,	122.17	,	12.44
2/18/05	,	109.40	,	124.41	,	15.01
2/26/05	,	110.29	,	127.46	,	17.17
3/4/05	,	111.27	,	132.68	,	21.41
3/11/05	,	109.26	,	134.14	,	24.88

3/18/05	,	108.31	,	129.62	,	21.31
3/25/05	,	106.65	,	127.85	,	21.20
4/1/05	,	106.79	,	122.68	,	15.89
4/8/05	,	107.54	,	125.70	,	18.16
4/15/05	,	104.03	,	125.41	,	21.38
4/22/05	,	104.90	,	118.40	,	13.50
4/29/05	,	105.33	,	121.41	,	16.09
5/6/05	,	106.65	,	119.85	,	13.20
5/13/05	,	105.07	,	121.51	,	16.44
5/20/05	,	108.28	,	116.64	,	8.36
5/27/05	,	109.14	,	120.80	,	11.66
6/4/05	,	108.89	,	121.63	,	12.74
6/10/05	,	109.08	,	122.76	,	13.68
6/17/05	,	110.80	,	123.09	,	12.29
6/24/05	,	108.49	,	128.50	,	20.01
7/1/05	,	108.75	,	125.38	,	16.63
7/9/05	,	110.33	,	127.64	,	17.31
7/15/05	,	111.80	,	129.40	,	17.60
7/22/05	,	112.32	,	129.44	,	17.11
7/29/05	,	112.37	,	133.01	,	20.64
8/5/05	,	111.66	,	134.40	,	22.74
8/12/05	,	112.02	,	135.66	,	23.64
8/19/05	,	111.05	,	138.84	,	27.79
8/26/05	,	109.72	,	134.34	,	24.62
9/2/05	,	110.90	,	134.72	,	23.82
9/10/05	,	113.03	,	142.25	,	29.22
9/16/05	,	112.71	,	145.58	,	32.88
9/23/05	,	110.65	,	145.65	,	35.01
9/30/05	,	111.88	,	146.84	,	34.96
10/7/05	,	108.88	,	150.57	,	41.69
10/14/05	,	108.03	,	141.26	,	33.22
10/21/05	,	107.40	,	137.12	,	29.72
10/28/05	,	109.11	,	134.34	,	25.23
11/4/05	,	111.09	,	136.69	,	25.61
11/11/05	,	112.42	,	142.53	,	30.11
11/18/05	,	113.65	,	143.84	,	30.19
11/25/05	,	115.47	,	145.81	,	30.34
12/2/05	,	115.18	,	149.02	,	33.84
12/9/05	,	114.66	,	150.54	,	35.88
12/16/05	,	115.38	,	151.02	,	35.64
12/23/05	,	115.51	,	149.72	,	34.21
12/31/05	,	113.65	,	152.29	,	38.63
1/7/06	,	117.03	,	151.09	,	34.06
1/13/06	,	117.23	,	161.86	,	44.63
1/21/06	,	114.85	,	162.81	,	47.96
1/27/06	,	116.88	,	161.57	,	44.69
2/3/06	,	115.08	,	166.78	,	51.69
2/10/06	,	115.35	,	162.81	,	47.45
2/17/06	,	117.20	,	160.41	,	43.21
2/25/06	,	117.40	,	162.62	,	45.22
3/3/06	,	117.20	,	163.95	,	46.75
3/10/06	,	116.67	,	163.37	,	46.70
3/17/06	,	119.02	,	154.31	,	35.30
3/24/06	,	118.63	,	161.00	,	42.37
3/31/06	,	117.89	,	160.19	,	42.29
4/7/06	,	117.95	,	161.40	,	43.45
4/14/06	,	117.37	,	164.56	,	47.19

4/21/06	,	119.39	,	164.21	,	44.82
4/28/06	,	119.33	,	173.62	,	54.29
5/5/06	,	120.70	,	172.42	,	51.72
5/12/06	,	117.56	,	180.23	,	62.67
5/19/06	,	115.36	,	174.52	,	59.16
5/26/06	,	116.55	,	162.11	,	45.56
6/2/06	,	117.29	,	159.42	,	42.13
6/9/06	,	114.02	,	159.68	,	45.66
6/16/06	,	113.95	,	148.42	,	34.47
6/23/06	,	113.31	,	145.56	,	32.25
6/30/06	,	115.65	,	146.29	,	30.65
7/7/06	,	115.22	,	153.11	,	37.90
7/14/06	,	112.55	,	152.15	,	39.59
7/21/06	,	112.92	,	150.84	,	37.92
7/28/06	,	116.41	,	154.93	,	38.53
8/4/06	,	116.48	,	157.29	,	40.81
8/11/06	,	115.33	,	154.55	,	39.22
8/18/06	,	118.57	,	154.44	,	35.87
8/25/06	,	117.91	,	152.05	,	34.14
9/1/06	,	119.36	,	154.35	,	34.99
9/9/06	,	118.26	,	150.73	,	32.47
9/15/06	,	120.15	,	153.02	,	32.87
9/22/06	,	119.71	,	153.19	,	33.48
9/29/06	,	121.62	,	154.84	,	33.21
10/6/06	,	122.87	,	156.44	,	33.57
10/13/06	,	124.33	,	159.77	,	35.44
10/20/06	,	124.61	,	159.84	,	35.24
10/27/06	,	125.40	,	161.04	,	35.63
11/3/06	,	124.21	,	159.49	,	35.28
11/10/06	,	125.72	,	163.29	,	37.56
11/17/06	,	127.57	,	165.07	,	37.50
11/24/06	,	127.55	,	167.50	,	39.95
12/1/06	,	127.16	,	166.09	,	38.93
12/8/06	,	128.36	,	168.66	,	40.30
12/15/06	,	129.93	,	170.28	,	40.35
12/22/06	,	128.44	,	165.79	,	37.34
12/29/06	,	129.13	,	171.22	,	42.09
1/5/07	,	128.35	,	166.88	,	38.53
1/12/07	,	130.26	,	168.24	,	37.98
1/19/07	,	130.24	,	168.95	,	38.71
1/26/07	,	129.48	,	169.36	,	39.88
2/2/07	,	131.87	,	172.69	,	40.82
2/9/07	,	130.93	,	174.36	,	43.43
2/16/07	,	132.52	,	176.28	,	43.76
2/23/07	,	132.12	,	175.58	,	43.45
3/2/07	,	126.30	,	159.04	,	32.75
3/9/07	,	127.67	,	162.61	,	34.94
3/16/07	,	126.28	,	160.79	,	34.51
3/23/07	,	130.75	,	169.15	,	38.40
3/30/07	,	129.36	,	169.59	,	40.22
4/6/07	,	131.45	,	176.16	,	44.71
4/13/07	,	132.28	,	179.67	,	47.39
4/20/07	,	135.14	,	182.01	,	46.87
4/27/07	,	136.03	,	181.21	,	45.18
5/4/07	,	137.08	,	184.23	,	47.15
5/11/07	,	137.10	,	184.71	,	47.60
5/18/07	,	138.64	,	187.36	,	48.72

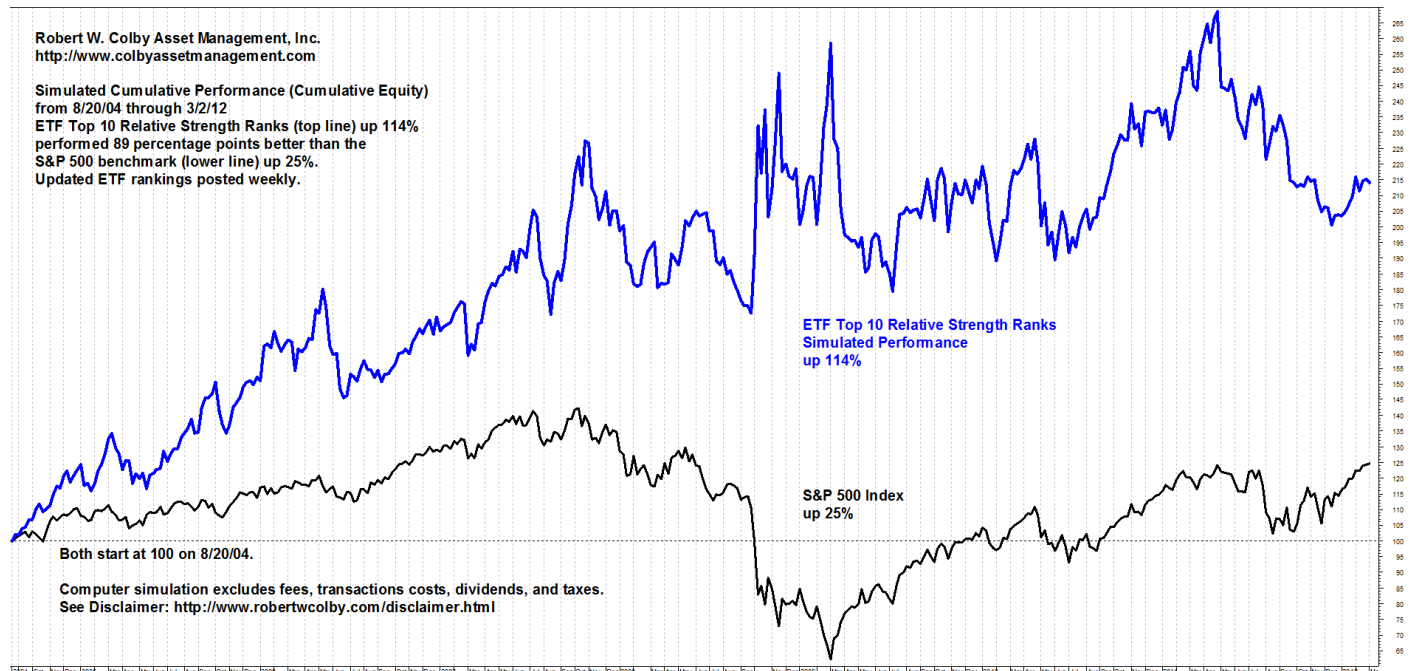
5/25/07	,	138.00	,	186.33	,	48.33
6/1/07	,	139.88	,	192.19	,	52.31
6/8/07	,	137.27	,	185.55	,	48.29
6/15/07	,	139.56	,	192.92	,	53.36
6/22/07	,	136.80	,	192.29	,	55.49
6/29/07	,	136.87	,	190.20	,	53.32
7/6/07	,	139.34	,	199.72	,	60.38
7/13/07	,	141.35	,	205.39	,	64.04
7/20/07	,	139.67	,	203.16	,	63.49
7/27/07	,	132.83	,	189.93	,	57.10
8/3/07	,	130.47	,	184.58	,	54.10
8/10/07	,	132.35	,	182.79	,	50.44
8/17/07	,	131.65	,	172.13	,	40.49
8/24/07	,	134.69	,	182.28	,	47.59
8/31/07	,	134.20	,	185.84	,	51.64
9/7/07	,	132.34	,	182.92	,	50.58
9/14/07	,	135.13	,	189.73	,	54.60
9/21/07	,	138.91	,	201.08	,	62.17
9/28/07	,	139.00	,	207.07	,	68.07
10/5/07	,	141.81	,	217.06	,	75.25
10/12/07	,	142.20	,	222.48	,	80.28
10/19/07	,	136.63	,	213.36	,	76.73
10/26/07	,	139.78	,	227.40	,	87.61
11/2/07	,	137.45	,	226.57	,	89.13
11/9/07	,	132.35	,	212.38	,	80.03
11/16/07	,	132.81	,	209.55	,	76.74
11/23/07	,	131.17	,	202.27	,	71.10
11/30/07	,	134.85	,	206.12	,	71.27
12/7/07	,	136.99	,	211.39	,	74.40
12/14/07	,	133.65	,	200.62	,	66.97
12/21/07	,	135.15	,	205.20	,	70.04
12/28/07	,	134.61	,	205.02	,	70.41
1/4/08	,	128.52	,	198.75	,	70.23
1/11/08	,	127.56	,	200.50	,	72.94
1/18/08	,	120.65	,	188.83	,	68.18
1/25/08	,	121.15	,	187.64	,	66.49
2/1/08	,	127.05	,	181.90	,	54.86
2/8/08	,	121.21	,	181.09	,	59.88
2/15/08	,	122.91	,	181.77	,	58.86
2/22/08	,	124.11	,	188.08	,	63.97
2/29/08	,	121.15	,	192.12	,	70.97
3/7/08	,	117.76	,	193.50	,	75.74
3/14/08	,	117.28	,	195.18	,	77.90
3/20/08	,	121.05	,	180.69	,	59.65
3/28/08	,	119.75	,	182.06	,	62.32
4/4/08	,	124.77	,	181.64	,	56.87
4/11/08	,	121.35	,	182.30	,	60.95
4/18/08	,	126.58	,	191.34	,	64.75
4/25/08	,	127.27	,	189.58	,	62.31
5/2/08	,	128.73	,	187.80	,	59.07
5/9/08	,	126.40	,	193.58	,	67.18
5/16/08	,	129.77	,	201.96	,	72.19
5/23/08	,	125.27	,	200.26	,	74.98
5/30/08	,	127.50	,	202.73	,	75.23
6/6/08	,	123.88	,	205.04	,	81.15
6/13/08	,	123.82	,	203.44	,	79.61
6/20/08	,	119.99	,	204.08	,	84.09

6/27/08	,	116.39	,	204.55	,	88.16
7/3/08	,	114.98	,	198.71	,	83.73
7/11/08	,	112.85	,	198.77	,	85.92
7/18/08	,	114.78	,	189.17	,	74.39
7/25/08	,	114.51	,	188.02	,	73.51
8/1/08	,	114.75	,	192.91	,	78.16
8/8/08	,	118.02	,	184.91	,	66.89
8/15/08	,	118.20	,	186.17	,	67.98
8/22/08	,	117.65	,	182.27	,	64.63
8/29/08	,	116.80	,	179.79	,	62.99
9/5/08	,	113.11	,	176.60	,	63.49
9/12/08	,	113.96	,	174.92	,	60.96
9/19/08	,	114.27	,	174.93	,	60.66
9/26/08	,	110.46	,	172.47	,	62.01
10/3/08	,	100.08	,	190.50	,	90.42
10/10/08	,	81.87	,	232.70	,	150.83
10/17/08	,	85.63	,	217.04	,	131.41
10/24/08	,	79.83	,	237.28	,	157.46
10/31/08	,	88.20	,	203.12	,	114.92
11/7/08	,	84.76	,	211.90	,	127.14
11/14/08	,	79.51	,	226.64	,	147.13
11/21/08	,	72.84	,	249.02	,	176.18
11/28/08	,	81.60	,	217.64	,	136.05
12/5/08	,	79.76	,	220.06	,	140.30
12/12/08	,	80.10	,	216.07	,	135.97
12/19/08	,	80.84	,	215.21	,	134.37
12/26/08	,	79.46	,	218.49	,	139.02
1/2/09	,	84.84	,	200.77	,	115.93
1/9/09	,	81.06	,	204.82	,	123.76
1/16/09	,	77.40	,	213.16	,	135.76
1/23/09	,	75.75	,	216.12	,	140.38
1/30/09	,	75.19	,	215.69	,	140.49
2/6/09	,	79.08	,	200.81	,	121.73
2/13/09	,	75.28	,	212.89	,	137.61
2/20/09	,	70.11	,	231.70	,	161.59
2/27/09	,	66.93	,	239.07	,	172.14
3/6/09	,	62.22	,	258.45	,	196.23
3/13/09	,	68.88	,	227.97	,	159.09
3/20/09	,	69.97	,	225.01	,	155.04
3/27/09	,	74.29	,	205.49	,	131.20
4/3/09	,	76.71	,	197.61	,	120.91
4/10/09	,	77.99	,	196.66	,	118.68
4/17/09	,	79.17	,	195.55	,	116.37
4/24/09	,	78.87	,	195.64	,	116.78
5/1/09	,	79.89	,	193.41	,	113.51
5/8/09	,	84.60	,	196.64	,	112.04
5/15/09	,	80.38	,	185.68	,	105.30
5/22/09	,	80.76	,	186.97	,	106.21
5/29/09	,	83.68	,	195.85	,	112.17
6/5/09	,	85.59	,	197.89	,	112.30
6/12/09	,	86.15	,	196.71	,	110.56
6/19/09	,	83.87	,	187.50	,	103.63
6/26/09	,	83.66	,	188.93	,	105.27
7/3/09	,	81.62	,	185.32	,	103.70
7/10/09	,	80.04	,	179.40	,	99.36
7/17/09	,	85.62	,	193.37	,	107.75
7/24/09	,	89.16	,	204.04	,	114.89

7/31/09	,	89.91	,	204.36	,	114.46
8/7/09	,	92.00	,	206.18	,	114.18
8/14/09	,	91.42	,	204.49	,	113.07
8/21/09	,	93.42	,	205.40	,	111.98
8/28/09	,	93.68	,	205.62	,	111.94
9/4/09	,	92.54	,	202.80	,	110.26
9/11/09	,	94.94	,	209.05	,	114.11
9/18/09	,	97.26	,	215.33	,	118.06
9/25/09	,	95.09	,	209.01	,	113.92
10/2/09	,	93.34	,	202.00	,	108.66
10/9/09	,	97.55	,	215.16	,	117.60
10/16/09	,	99.03	,	218.66	,	119.63
10/23/09	,	98.29	,	215.23	,	116.93
10/30/09	,	94.34	,	198.32	,	103.98
11/6/09	,	97.36	,	207.43	,	110.07
11/13/09	,	99.56	,	213.90	,	114.34
11/20/09	,	99.37	,	210.53	,	111.17
11/27/09	,	99.38	,	210.24	,	110.86
12/4/09	,	100.69	,	214.97	,	114.28
12/11/09	,	100.73	,	210.86	,	110.13
12/18/09	,	100.38	,	207.62	,	107.24
12/24/09	,	102.56	,	214.83	,	112.27
12/31/09	,	101.53	,	212.11	,	110.58
1/8/10	,	104.25	,	219.35	,	115.10
1/15/10	,	103.43	,	213.49	,	110.06
1/22/10	,	99.40	,	201.27	,	101.87
1/29/10	,	97.77	,	195.18	,	97.41
2/5/10	,	97.07	,	189.12	,	92.05
2/12/10	,	97.92	,	195.11	,	97.19
2/19/10	,	100.99	,	202.11	,	101.13
2/26/10	,	100.56	,	201.77	,	101.21
3/5/10	,	103.67	,	212.78	,	109.11
3/12/10	,	104.70	,	217.95	,	113.25
3/19/10	,	105.60	,	216.72	,	111.12
3/26/10	,	106.21	,	218.54	,	112.33
4/2/10	,	107.26	,	221.41	,	114.15
4/9/10	,	108.74	,	226.29	,	117.54
4/16/10	,	108.54	,	221.56	,	113.02
4/23/10	,	110.83	,	227.97	,	117.14
4/30/10	,	108.04	,	220.60	,	112.55
5/7/10	,	101.14	,	200.18	,	99.04
5/14/10	,	103.40	,	207.57	,	104.17
5/21/10	,	99.03	,	194.24	,	95.21
5/28/10	,	99.19	,	198.39	,	99.20
6/4/10	,	96.95	,	189.53	,	92.58
6/11/10	,	99.39	,	198.22	,	98.83
6/18/10	,	101.74	,	204.88	,	103.14
6/25/10	,	98.03	,	200.18	,	102.14
7/2/10	,	93.10	,	191.66	,	98.56
7/9/10	,	98.14	,	196.67	,	98.53
7/16/10	,	96.95	,	193.62	,	96.67
7/23/10	,	100.39	,	200.03	,	99.63
7/30/10	,	100.30	,	203.07	,	102.78
8/6/10	,	102.12	,	205.67	,	103.55
8/13/10	,	98.26	,	199.30	,	101.04
8/20/10	,	97.57	,	202.81	,	105.24
8/27/10	,	96.93	,	203.20	,	106.28

9/3/10	,	100.56	,	209.21	,	108.65
9/10/10	,	101.02	,	208.86	,	107.84
9/17/10	,	102.48	,	213.36	,	110.88
9/24/10	,	104.58	,	217.65	,	113.07
10/1/10	,	104.36	,	223.19	,	118.83
10/8/10	,	106.08	,	226.22	,	120.13
10/15/10	,	107.09	,	229.40	,	122.31
10/22/10	,	107.71	,	227.62	,	119.90
10/29/10	,	107.73	,	227.75	,	120.02
11/5/10	,	111.61	,	239.24	,	127.63
11/12/10	,	109.18	,	231.09	,	121.91
11/19/10	,	109.23	,	232.80	,	123.57
11/26/10	,	108.29	,	225.87	,	117.58
12/3/10	,	111.50	,	236.59	,	125.08
12/10/10	,	112.93	,	236.79	,	123.86
12/17/10	,	113.25	,	236.39	,	123.14
12/24/10	,	114.42	,	236.51	,	122.09
12/31/10	,	114.50	,	237.96	,	123.45
1/7/11	,	115.76	,	232.37	,	116.61
1/14/11	,	117.74	,	237.13	,	119.39
1/21/11	,	116.84	,	227.91	,	111.07
1/28/11	,	116.21	,	231.01	,	114.80
2/4/11	,	119.35	,	239.79	,	120.44
2/11/11	,	121.01	,	242.73	,	121.72
2/18/11	,	122.28	,	250.91	,	128.64
2/25/11	,	120.17	,	250.04	,	129.87
3/4/11	,	120.28	,	255.93	,	135.65
3/11/11	,	118.75	,	245.10	,	126.35
3/18/11	,	116.47	,	243.54	,	127.08
3/25/11	,	119.62	,	255.41	,	135.79
4/1/11	,	121.31	,	260.22	,	138.91
4/8/11	,	120.92	,	264.69	,	143.77
4/15/11	,	120.15	,	258.72	,	138.57
4/22/11	,	121.76	,	266.10	,	144.34
4/29/11	,	124.15	,	268.62	,	144.47
5/6/11	,	122.02	,	244.58	,	122.56
5/13/11	,	121.80	,	244.21	,	122.41
5/20/11	,	121.39	,	243.32	,	121.93
5/27/11	,	121.19	,	246.94	,	125.75
6/3/11	,	118.37	,	241.12	,	122.74
6/10/11	,	115.72	,	234.09	,	118.37
6/17/11	,	115.76	,	231.74	,	115.98
6/24/11	,	115.49	,	228.23	,	112.74
7/1/11	,	121.97	,	237.37	,	115.40
7/8/11	,	122.35	,	242.19	,	119.85
7/15/11	,	119.83	,	238.98	,	119.15
7/22/11	,	122.46	,	244.55	,	122.09
7/29/11	,	117.66	,	238.55	,	120.90
8/5/11	,	109.20	,	221.59	,	112.39
8/12/11	,	107.33	,	225.90	,	118.57
8/19/11	,	102.29	,	231.88	,	129.58
8/26/11	,	107.14	,	230.49	,	123.34
9/2/11	,	106.88	,	235.57	,	128.68
9/9/11	,	105.09	,	232.44	,	127.35
9/16/11	,	110.71	,	227.47	,	116.75
9/23/11	,	103.47	,	214.72	,	111.26
9/30/11	,	103.01	,	214.24	,	111.23

10/7/11	105.20	212.76	107.56
10/14/11	111.49	213.59	102.10
10/21/11	112.74	212.78	100.04
10/28/11	117.00	215.86	98.86
11/4/11	114.10	214.48	100.38
11/11/11	115.07	215.14	100.07
11/18/11	110.68	208.51	97.83
11/25/11	105.49	204.82	99.33
12/2/11	113.29	206.35	93.06
12/9/11	114.28	206.03	91.75
12/16/11	111.04	200.66	89.62
12/23/11	115.20	203.66	88.46
12/30/11	114.50	203.90	89.40
1/6/12	116.34	203.53	87.19
1/13/12	117.37	205.03	87.67
1/20/12	119.76	207.08	87.32
1/27/12	119.85	209.86	90.01
2/3/12	122.45	215.95	93.50
2/10/12	122.24	211.46	89.22
2/17/12	123.93	214.62	90.68
2/24/12	124.34	215.28	90.94
3/2/12	124.70	214.02	89.32
----	----	----	----
Date	S&P 500	Top 10 ETFs	Advantage Top 10 ETFs



This weekly report is intended to add value to my Top 10 ETF research study with additional research intended to give you a more complete strategy that you can apply with greater confidence. I know how important it is to you to preserve and grow your capital. The best way do this is to participate fully in market uptrends **and** to cut risk decisively in significant market downtrends. It is even better if you can **anticipate in advance** changes in trend, and I'll try my best to help you with that by carefully calculating and weighing Reward versus Risk probabilities in this report each week. Updates between weekly reports also will be emailed to you when changing conditions

warrant. Note, however, that written reports cannot substitute for full-time professional investment management.

The information in this report is intended for sophisticated traders and investors who understand the risks of trading in the financial markets. The information and data herein are based on sources available to the public. The contents are not investment advice. No representation is made that this information is reliable, accurate, complete or current. No representation is made that any regulatory authority has passed on the merits, adequacy or accuracy of this information. Nothing herein should be interpreted as any kind of offer, solicitation, commitment, promise, warranty, or guarantee whatsoever relating to any of the contents of these pages. INFORMATION PROVIDED IN THIS DOCUMENT IS PROVIDED "AS IS" WITHOUT WARRANTY OF ANY KIND, EITHER EXPRESS OR IMPLIED. The author of this report, as well as affiliated persons and companies, are not responsible for any investment decision and accept no liability for any loss arising from the use of information contained in this report. The reader assumes the entire risk of any use whatsoever of this information.

Robert W. Colby Asset Management, Inc. (Colby) hereby certifies that the views expressed in this research report accurately reflect the personal views of the Company's Chief Investment Officer, Robert W. Colby, CMT, and/or other trained members of Colby, about any and all of the subject markets or securities, and further certifies that no part of the compensation of Colby was, is, or will be directly or indirectly related to the recommendations or views in this report. Colby is engaged in investment management as well as the conduct and publication of professional-quality, independent technical analysis research and, as a matter of policy, always makes best efforts to be as objective and unbiased as possible.

Any and all statements referring to Robert W. Colby Asset Management, Inc., performance are intended to be accurate and complete and to disclose all material facts necessary to avoid any unwarranted inference. Any and all investment performance data shown reflect all accounts in our recommended investment program. (Some clients, at their own choosing, may hold securities that are not included in our recommended investment program, or they may choose to deviate from our program in some other way; therefore, their performance results may deviate from our recommended investment program, for better or worse, and are not included in our performance data.) Our performance data reflects the deduction of advisory fees, brokerage or other commissions and fees, and any other expenses that accounts have actually paid. Our performance data reflects the reinvestment of dividends, interest, and other earnings. Our investment strategies and all fees are explained on our website and in our disclosure documents and also are available on request. The industry standard benchmark for performance comparison is generally the S&P 500 Index, although that and all other price indexes have certain limitations in that they differ from our recommended investment program in volatility, asset mix, diversification/concentration, dividends, interest, trading costs, fees, and other factors. Unlike the S&P 500 Index, which passively reflects the price performance of 500 large-capitalization stocks, our recommended investment program is concentrated in relatively few securities and actively aims first for capital preservation and second for capital appreciation. We work continuously to achieve these goals. We try to anticipate and adapt to change. Regulators point out that there can never be any guarantees in investing; there is always risk and the possibility of loss; changing market conditions are beyond anyone's control; and past performance is not a guide to future performance. Colby's technical analysis is prepared using widely-available public data that is generally accepted as reasonably reliable, although Colby cannot guarantee accuracy

or completeness of data and analysis and no representation is made to that effect. Colby's technical analysis is based primarily on analysis of the current price and volume performance of a security relative to other securities and in the context of its historical patterns of performance, in accordance with the Body of Knowledge and Code of Ethics endorsed by the Market Technicians Association, the globally-recognized, professional regulatory organization for technical analysts established in 1973. (See: [mta.org](http://mta.org).) Past Performance is not a guide to future performance. Investments discussed in this report are not suitable for all investors. This report does not take into account the investment objectives, financial situation or specific needs of any particular investor. Every investor should consider whether any suggestion or recommendation is appropriate given his particular circumstances. Technical analysis alone should not be relied upon as the sole basis for making investment decisions. All publicly available information regarding the security in question should be reviewed, including the fundamentals of the security and other information provided in any filings with the Securities and Exchange Commission (SEC).

Although persons and companies associated with Colby may from time to time hold positions in securities mentioned in these research reports, Colby's policy proscribes any employee activity that would conflict with client interests.

The information provided herein is protected by copyright and intellectual property laws. You may not reproduce, retransmit, distribute, disseminate, sell, publish, broadcast or circulate the information to anyone in any form whatsoever, without the express written consent of the publisher.

Copyright © 2012 by Robert W. Colby Asset Management, Inc. All rights reserved.  
Robert W. Colby Asset Management, Inc., 40 Wall Street, 28th Floor, New York, NY 10005; phone: 646-652-6879; email: [info@colbyassetmanagement.com](mailto:info@colbyassetmanagement.com)